

Demographic Study  
**Public School Enrollments**  
for  
**Tredyffrin/Easttown School District**  
940 West Valley Road , Suite 1700, Wayne, PA 19087

Prepared by



**Sundance Associates**

117 Greenvale Court  
Cherry Hill, NJ 08034

Tel 856-755-0174

Fax 856-755-0176

E-mail: [gsundell@sundanceassoc.com](mailto:gsundell@sundanceassoc.com)

November 4, 2020

Revised November 18, 2020

# Table of Contents

	Pages
<b>SUPPORTING DEMOGRAPHICS</b>	
Births; Municipal and District School Year	1
Population: Municipal & Combined	2
Residential Permitting for New Construction	3
Future Housing Occupancy Schedule	4
School Age Multipliers	5
New Students from New Housing	6
New Students by School	7
Comparative Factors: Residential Sales, Permits & Enrollments	8
<b>ENROLLMENT PROJECTIONS</b>	
Historic Enrollments 2000-18	9
Grade Level Cohort Survival Rates	10
Enrollment Comparisons: Projected, Actual, Cohort	11
Exit Reasons Analysis	12
Cohort Change and Exit Summary	13
District Wide Enrollments by Year	14
Elementary Grade K-4 Enrollments	15
Middle School Grade 5-8 Enrollments	16
High School Grade 9-12 Enrollments	17
Comparative Enrollments by Grade Level Organization	18
Beaumont Elementary	19
Devon Elementary	20
Hillside Elementary	21
New Eagle Elementary	22
Valley Forge Elementary	23
Comparative Elementary Enrollments by School	24
Tredyffrin-Easttown Middle	25
Valley Forge Middle	26
Comparative Middle School Enrollments by School	27
<b>APPENDIX</b>	
Comparative Alternate Enrollments by Grade and Year	
Elementary Grades and Schools	
Middle School Grades and Schools	

## Introductory Notes

### NOTES REGARDING THIS OCTOBER 2020 UPDATE STUDY

The projection uses the Standard methodology for Cohort Survival as described in previous studies for the Tredyffrin-Easttown School District

Adjustments are made for several recent trends.

1. Adjustments are made for **New Housing** in accordance with permitting and occupancy schedules determined in consultation with the Developers, Between 70 and 85 students are added to the projection(s) over the 5-year projection period.

*However, it is worth noting that the Average Annual Residential Sales of existing housing, at a level of 600, has a much greater impact on enrollment than does New Housing alone.*

2. Adjustments continue to be made in the Beaumont, Devon and Hillside Elementary School projects in recognition of attendance area **boundary changes** made for school year 2018-19.

Enrollments as of October 1, 2020 are 247 students less than last year's enrollment and 375 students less than the projection. Reasons for this decrease, including the impact of the COVID-19 pandemic, are analyzed on pages 10 to 13.

The impact of the pandemic is particularly noted as the primary driver of

a) significantly reduced enrollments in the October 1 Kindergarten and 1st Grade, and

b) significant and/or continued decreases in the Grade Level Survival Ratios for 10 Of 12 Ratios.

Therefore three (3) projections are made in this study. They are

**2.00** This projection uses the standard methods utilizing all Survival Rates from six years of Actual Enrollments including this years that are impacted by the pandemic, plus the addition of **71 students from new housing**.

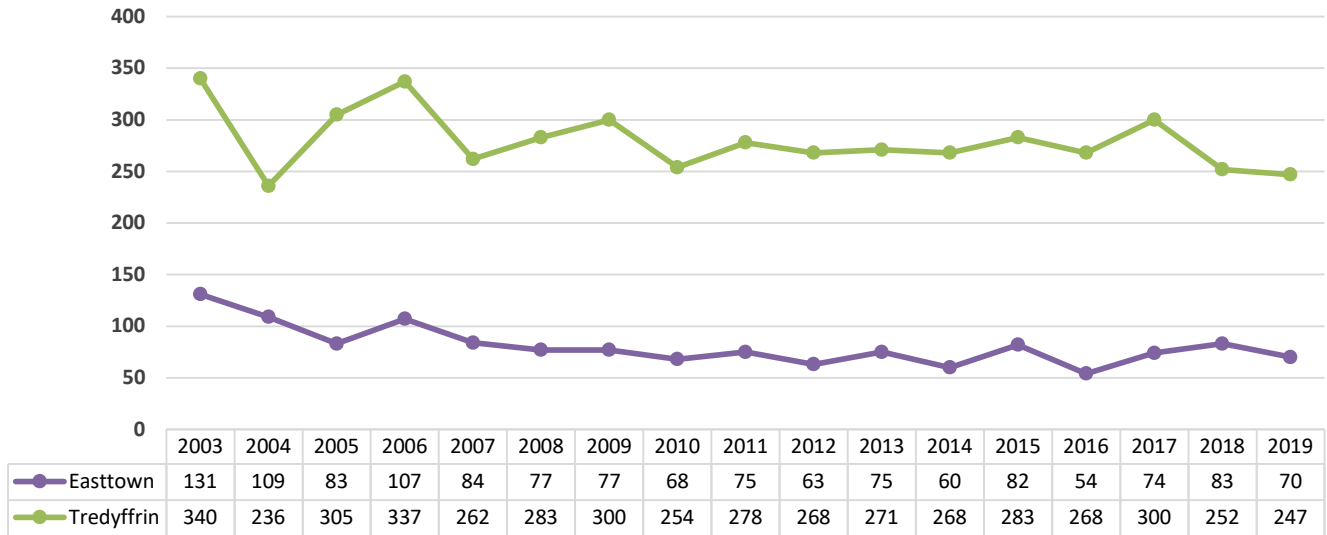
**2.02** This projection uses the standard methods utilizing all Survival Rates from six years of Actual Enrollments including this years that are impacted by the pandemic, plus the addition of 71 students from new housing,...**plus 100 "delayed entry" students** are added next year as 25 to Kindergarten and 75 to 1st Grade.

**2.12** This Accelerated projection uses the standard methods utilizing **Survival Rates from only five of six years of Actual Enrollments**, NOT including this years that are impacted by the pandemic, plus the addition of 71 students from new housing,...plus 100 "delayed entry" students are added next year as 25 to Kindergarten and 75 to 1st Grade.

**Live Births**

Tredyffrin-Easttown School District

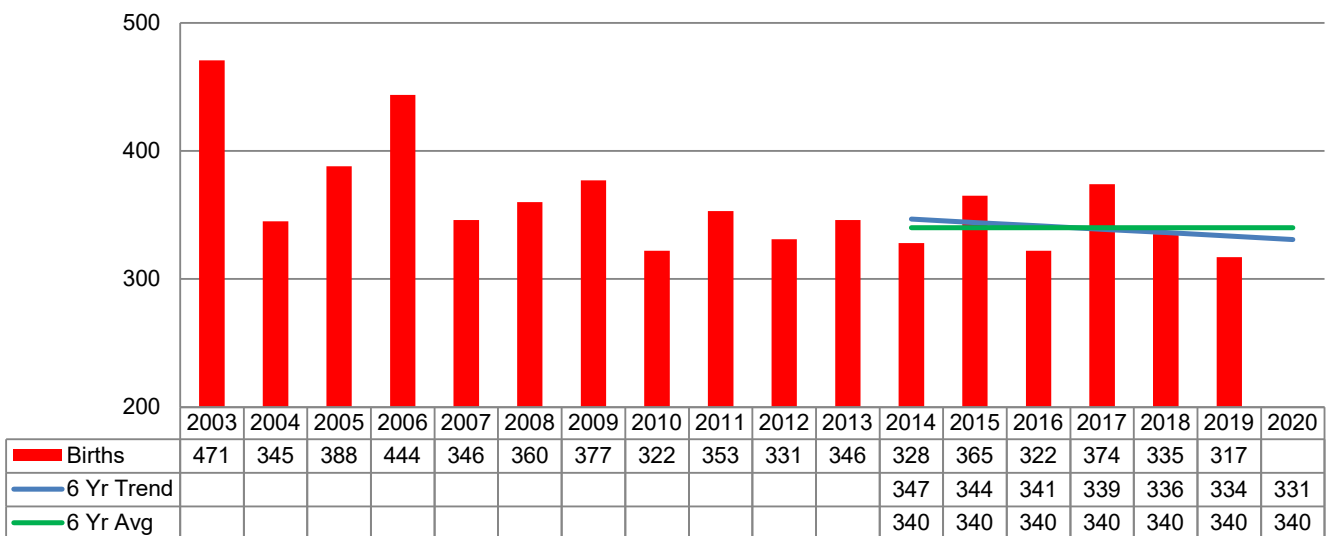
**TESD Live Births by Municipality**



This study uses the 6-year Average of 340 annual Births for school years 2025-26 (5th year projection) and forward for which data is not available. This is 5 Births lower than last years average.

The 6-year trend is for two fewer Birth per year, comparable to last year's trend.

**TESD Combined Live Births-Calendar Year**

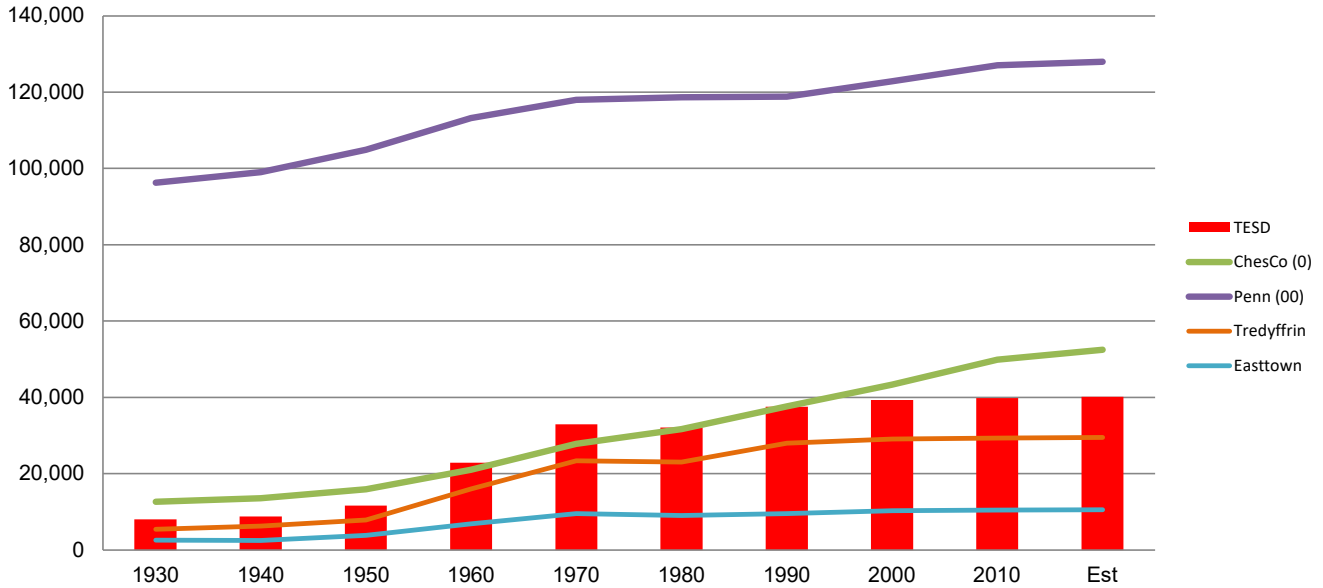


**Comparative Population Growth**

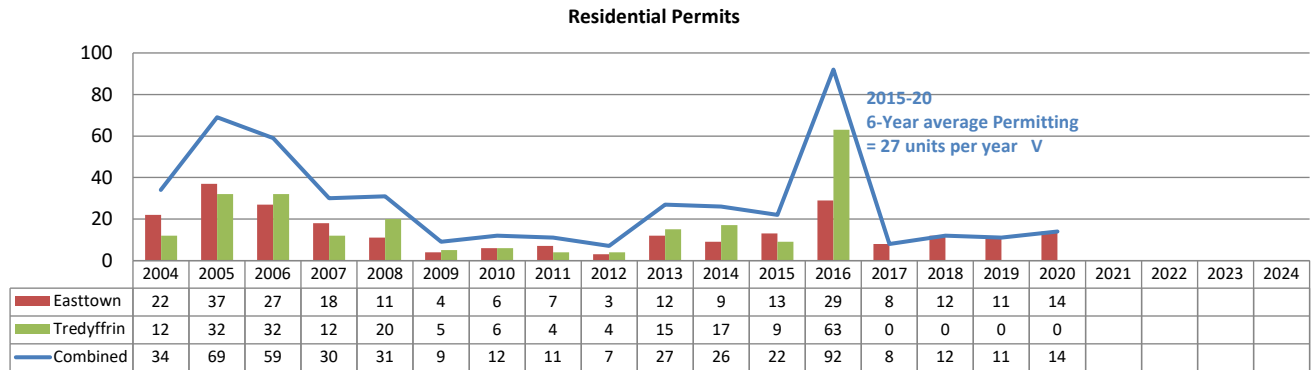
	1930	1940	1950	1960	1970	1980	1990	2000	2010	est 2019
<b>TESD</b>	8,028	8,812	11,647	22,911	32,969	32,083	37,598	39,332	39,809	
<b>Chester Co</b>	126,629	135,626	159,141	210,608	278,311	316,660	376,396	433,501	498,886	524,989
<b>Pennsylvania</b>	9,631,350	9,900,180	10,498,012	11,319,366	11,793,909	11,863,895	11,881,643	12,281,054	12,702,379	12,801,989
<b>Tredyffrin</b>	5,458	6,260	7,836	16,004	23,404	23,019	28,028	29,062	29,332	est 2017 <sup>1</sup> 29,552
<b>Easttown</b>	2,570	2,552	3,811	6,907	9,565	9,064	9,570	10,270	10,477	10,584

1- Municipal estimates are from the 2013-2017 American Community Survey 5-Year Estimate;  
 2- County estimates are from "QuickFacts Chester County, Pennsylvania". United States Census Bureau

**Local TESD -County-State Comparative Population**

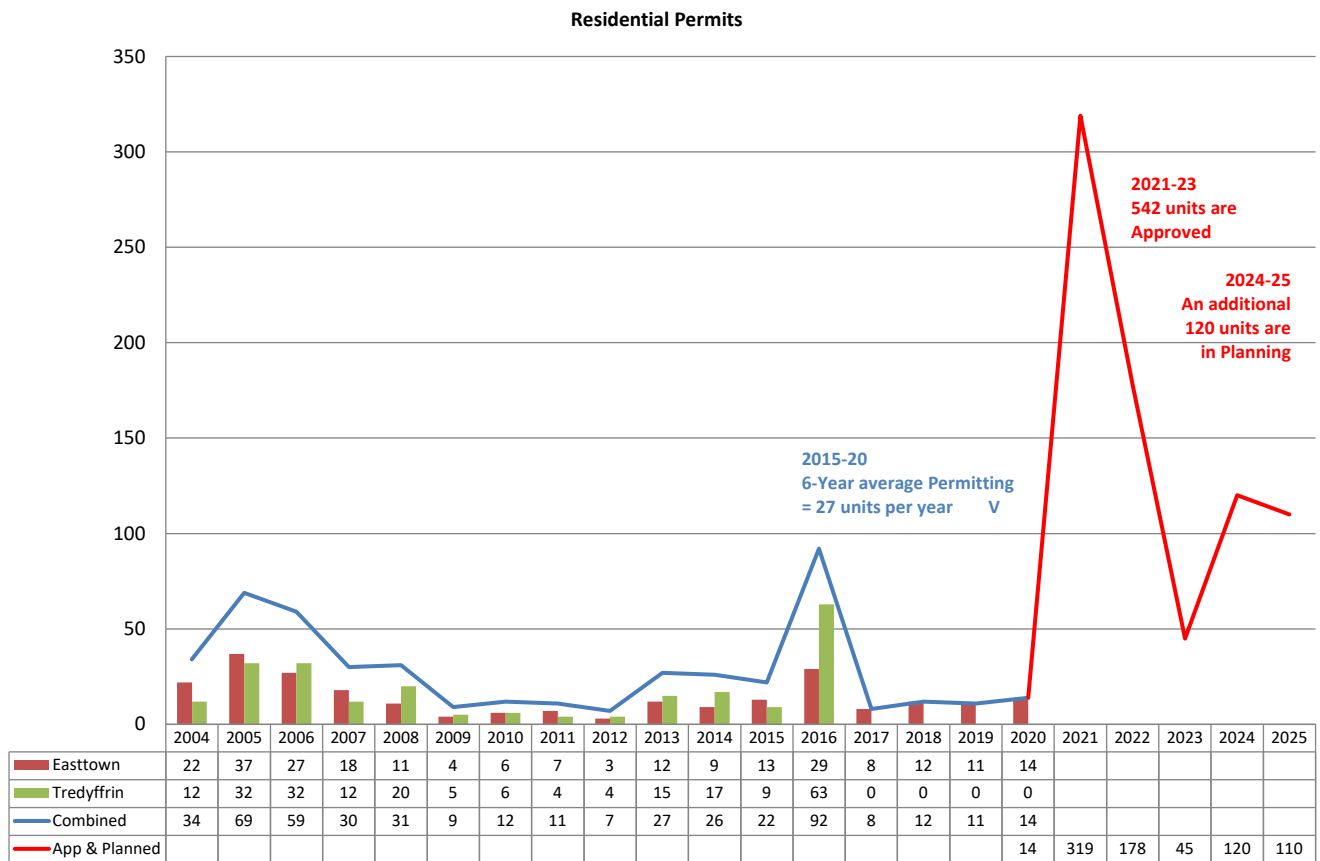


**Residential Permitting**



Permits for Residential units have averaged 27 per year over the most recent 6 years. Permitting peaked in year 2016 at 92 units.

542 units are permitted or near approvals and will be occupied in the next 3-4 years. Students from 27 units per year above the average, or between 41% to 91% each year, will impact the enrollments in the first three years of the projection.



Tredyffrin-Easttown School District

**Future Housing Occupancy Schedule**

	Type	Bdrms	Unit Count	2016	2017	2018	2019	2020	2021	2022	2023	2024	2025	Total Remain
<b>Tredyffrin</b>														
<b>Wayne Glen</b> 750 Walker Rd. <i>Occ start 11/20</i>	Twins	3 Bdrm	26						10	10	6			26
	Townhouse	3 Bdrm	65						22	22	21			65
				91						32	32	27		
<b>Parkview at Chesterbrook</b> 500 Chesterbrook Blvd. <i>All units sold/occupied by 2019</i>	TH own	3 Bdrm	68	22	22	18	6							
	TH rent	3 Bdrm	60	18	18	18	6							
			128	40	40	36	12							
<b>Village Square</b> 23-45 So Valley Rd. <i>21 units occupied</i>	Townhouse	2 Bdrm	4					3	1					
	Townhouse	3 Bdrm	26					18	8					
			30					21	9					
<b>Chestnut Rd Apts</b> 35, 37,39,43 Chestnut <i>Occ after 11/19</i>	Rental Apt	1 Bdrm	4						4					
	Rental Apt	2 Bdrm	11						11					
			15						15					
<b>1237 Lancaster Ave</b> 1237 Lancaster Ave, Berwyn <i>Appr Aug '19</i>	Rental Apt	1 Bdrm	1							1				1
	Rental Apt	2 Bdrm	3							3				3
			4							4				4
<b>Airdrie at Paoli Sta</b> 37 N. Valley <i>Occ start 1/20</i>	Rental Apt	1 Bdrm	73						73					73
	Rental Apt	2 Bdrm	83						83					83
			156						156					156
<b>Peytons Crossing</b> 20-22 Berkley Rd. <i>Foreclosed</i>	Townhouse	3 Bdrm	7											
			7											
<b>Mack Oil-Tredyffrin</b> 44-55 Branch Ave. <i>approved, no permits yet</i>	Single Fam	4 Bdrm	5							5				5
			5							5				5
<b>400 Swedesford</b> 400 Swedesford Rd <i>Const start 2021</i>	Rental Apt	1 Bdrm	142						71	71				142
	Rental Apt	2 Bdrm	94						47	47				94
	Rental Apt	3 Bdrm	14						7	7				14
			250						125	125				250
<b>Easttown</b>														
<b>Newtown Road</b> 1016 Newtown Rd <i>Under Review, no approval</i>	Single Fam	4 Bdrm	12						6	6				12
			12						6	6				12
<b>Mack Oil-Easttown</b> 44-55 Branch Ave. <i>SD Approved, not yet permitted</i>	Single Fam	4 Bdrm	18								18			18
			18								18			18
<b>Armstrong Prop</b> 30-50 Price Ave <i>Under construction</i>	Single Fam	4 Bdrm	6							6				6
			6							6				6
<b>Berwyn Square</b> 578 Lancaster <i>Preliminary</i>	Rental Apt	1 Bdrm	60									60		60
	Rental Apt	2 Bdrm	60									60		60
			120									120		120
<b>WWEDFritz Lumber</b> 631 Lancaster Ave. <i>Withdrawn/sold, no resubmit</i>	Rental Apt	1 Bdrm	10											0
	Rental Apt	2 Bdrm	32											0
			42									0		0
<b>TOTAL</b>	Approved			40	40	36	33	24	319	178	45	0		542
	Approved & Speculative			40	40	36	33	24	319	178	45	120		662

**Multipliers by Unit Type and Number of Bedrooms**

		<b>Rutgers Ctr for Urban Policy</b>	
		<b>School Age Children</b>	<b>Public School Age Children</b>
<b>Townhouse</b> <i>Own</i>	2 Bdrm	0.160	0.150
<b>Townhouse</b> <i>Own</i>	3 Bdrm	0.420	0.360
<b>Townhouse</b> <i>Rent</i>	3 Bdrm	0.680	0.590
<b>Apartment</b> <i>Rent</i>	1 Bdrm	0.040	0.040
<b>Apartment</b> <i>Rent</i>	2 Bdrm	0.210	0.190
<b>Apartment</b> <i>Rent</i>	3 Bdrm	0.730	0.700
<b>Single Family</b>	4 Bdrm	1.060	0.840



Multipliers for School Age Children by Unit Type and Number of Bedrooms are sourced from "Residential Demographic Multipliers for Pennsylvania" prepared by the Edward J. Bloustein School of Planning and Public Policy at Rutgers the StateUniversity of New Jersey.

However, analysis of Students from "above the average" New Housing at a possible 154 units per year is impacting less and less on the projection than is Resales of Existing Housing at 600 per year. About 27 units per year is the "built-into the Survival Rates" portion of previous new housing.

The Rutgers analysis projects between 105 to 135 students (approved to approved plus planned over 5 years) from new housing of which only 70 to 85 per year are above the average and added to the standard projection.

That is 14-17 students per year above the average about 1 to 1.5 students per grade added per year from New Housing



Tredyffrin-Easttown School District  
**Future Public School Students by Occupancy Schedule**

**Rutgers PSAC Multipliers**

	Type	Bdrms	PSAC/ Unit	2016	2017	2018	2019	2020	2021	2022	2023	2024	2025	Total Remain
<b>Tredyffrin</b>														
<b>Wayne Glen</b>	Twins	3 Bdrm	0.360						3.6	3.6	2.2			9
750 Walker Rd.	Townhouse	3 Bdrm	0.360						7.9	7.9	7.6			23
<i>Occ start 11/20</i>			0.720						11.5	11.5	9.7			33
<b>Parkview at Chesterbrook</b>	TH <i>own</i>	3 Bdrm	0.360	22	22	18	6							0
500 Chesterbrook Blvd.	TH <i>rent</i>	3 Bdrm	0.590	18	18	18	6							0
<i>All units sold/occupied by 2019</i>				40	40	36	12							0
<b>Village Square</b>	Townhouse	2 Bdrm	0.150					3	0.2					0
23-45 So Valley Rd.	Townhouse	3 Bdrm	0.360					18	2.9					3
<i>21 sale units occupied</i>								21	3.0					3
<b>Chestnut Rd Apts</b>	Rental Apt	1 Bdrm	0.040						0.2					0
35, 37, 39, 43 Chestnut	Rental Apt	2 Bdrm	0.190						2.1					2
<i>Occ after 11/19</i>									2.3					2
<b>1237 Lancaster Ave</b>	Rental Apt	1 Bdrm	0.040							0.0				0
1237 Lancaster Ave, Berwyn	Rental Apt	2 Bdrm	0.190							0.6				1
<i>Appr Aug '19</i>										0.6				1
<b>Airdrie at Paoli Sta</b>	Rental Apt	1 Bdrm	0.040						2.9					3
37 N. Valley	Rental Apt	2 Bdrm	0.190						15.8					16
<i>Occ start 1/20</i>									18.7					19
<b>Peytons Crossing</b>	Townhouse	3 Bdrm	0.360											0
20-22 Berkley Rd.														0
<i>Foreclosed</i>														
<b>Mack Oil-Tredyffrin</b>	Single Fam	4 Bdrm	0.840							4.2				4
44-55 Branch Ave.										4.2				4
<i>approved, no permits yet</i>														
<b>400 Swedesford</b>	Rental Apt	1 Bdrm	0.040						2.8	2.8				6
400 Swedesford Rd	Rental Apt	2 Bdrm	0.190						8.9	8.9				18
	Rental Apt	3 Bdrm	0.700						4.9	4.9				10
									16.7	16.7				33
<b>Easttown</b>														
<b>Newtown Road</b>	Single Fam	4 Bdrm	0.840						5.0	5.0				10
1016 Newtown Rd									5.0	5.0				10
<b>Mack Oil-Easttown</b>	Single Fam	4 Bdrm	0.840								15.1			15
44-55 Branch Ave.											15.1			15
<i>SD Approved, not yet permitted</i>														
<b>Armstrong Prop</b>	Single Fam	4 Bdrm	0.840							5.0				5
30-50 Price Ave										5.0				5
<i>Under construction</i>														
<b>Berwyn Square</b>	Rental Apt	1 Bdrm	0.040									2.4		2
578 Lancaster	Rental Apt	2 Bdrm	0.190									11.4		11
<i>Preliminary</i>												13.8		14
<b>WWEDFritz Lumber</b>	Rental Apt	1 Bdrm	0.040											
631 Lancaster Ave.	Rental Apt	2 Bdrm	0.190											
<i>Withdrawn/sold, no resubmit</i>														
<b>TOTAL Approved</b>				40	40	36	33	5.3	51.9	43.1	9.7	0.0	0.0	105
<b>TOTAL Approved &amp; Speculative</b>								5.3	51.9	43.1	24.8	13.8	0.0	134

Tredyffrin-Easttown School District

**Student Yield from New Housing Above the Average by Attendance Area**

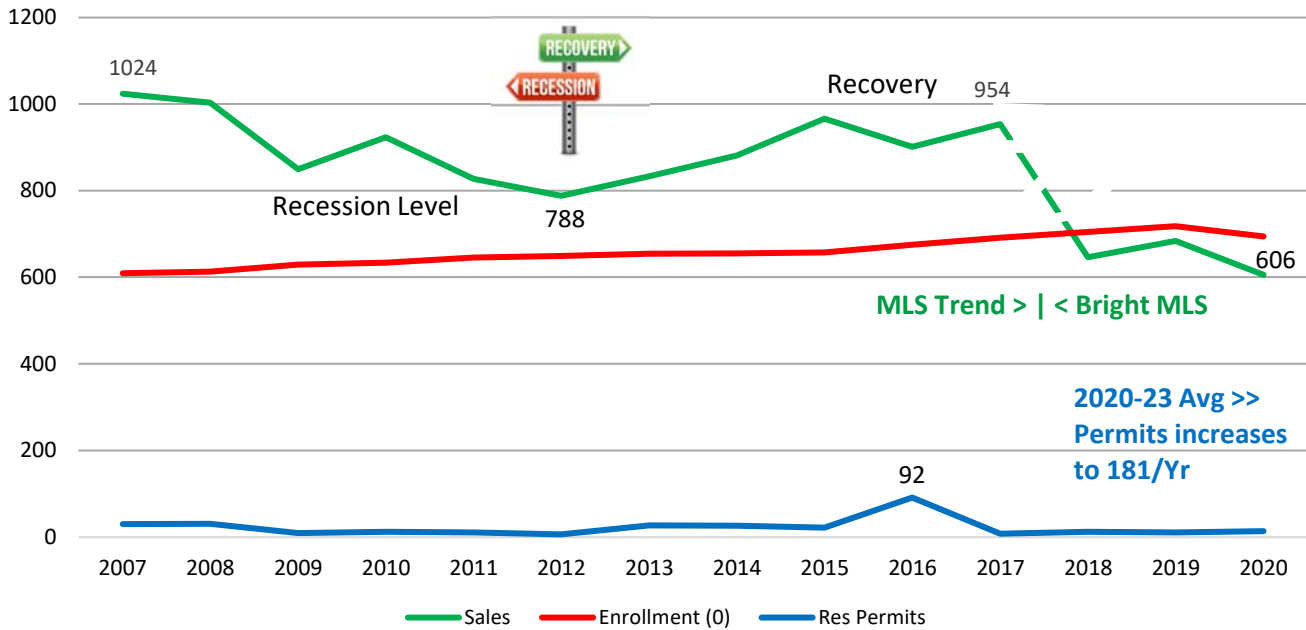
<b>Approved Only</b>		2020	2021	2022	2023	2024	2025	<b>Total</b>	
<i>by changing % each year</i>			91.5%	84.8%	40.0%	0.0%	0.0%		
			10.5	9.8	3.9			24.2	New Eagle
			15.3	14.1				29.4	Valley Forge
				3.5				3.5	Hillside (45%)
			<b>25.8</b>	<b>27.4</b>	<b>3.9</b>	<b>0.0</b>	<b>0.0</b>	<b>57.1</b>	<b>VFMS w Sta Sq</b>
			4.6	4.8				9.4	Beaumont
				4.3				0.0	Devon
			<b>4.6</b>	<b>9.1</b>	<b>0.0</b>	<b>0.0</b>	<b>0.0</b>	<b>13.7</b>	<b>TEMS</b>
			<b>30.4</b>	<b>36.5</b>	<b>3.9</b>	<b>0.0</b>	<b>0.0</b>	<b>70.9</b>	<b>District Approved</b>
<b>Approved &amp; Planned</b>		2020	2021	2022	2023	2024	2025	<b>Total</b>	
<i>by changing % each year</i>			91.5%	84.8%	40.0%	77.5%	75.5%		
			10.5	9.8	3.9			24.2	New Eagle
			15.3	14.1				29.4	Valley Forge
			0.0	3.5	3.4			6.9	Hillside (45%)
			<b>25.8</b>	<b>27.4</b>	<b>3.9</b>	<b>0.0</b>	<b>0.0</b>	<b>57.1</b>	<b>VFMS w Sta Sq</b>
			4.6	4.8				9.4	Beaumont
						10.7		10.7	Devon
				4.3	3.3			7.6	Hillside (55%) w/ Sta Sq
			<b>4.6</b>	<b>9.1</b>	<b>3.3</b>	<b>10.7</b>	<b>0.0</b>	<b>27.7</b>	<b>TEMS</b>
			<b>30.4</b>	<b>36.5</b>	<b>7.2</b>	<b>10.7</b>	<b>0.0</b>	<b>84.9</b>	<b>District App &amp; Planned</b>

In each year, only a Percentage of New Students "Above the Average" is added to the standard projection for the District and for School Attendance Area.

The sums of the Elementary Schools students are added to determine the "above average" Middle School students. An exception is that students from Station Square are added in total to Valley Forge MS. Otherwise "new" Hillside ES students are divided 55% to TEMS and 45% to VFMS.

For example , in the Approved table, only 91.7% of the New students are above the average in year 2021, 85.1 % in 2022 and 41.1% in year 2023.

### Residential Sales, Residential Permits and Enrollment

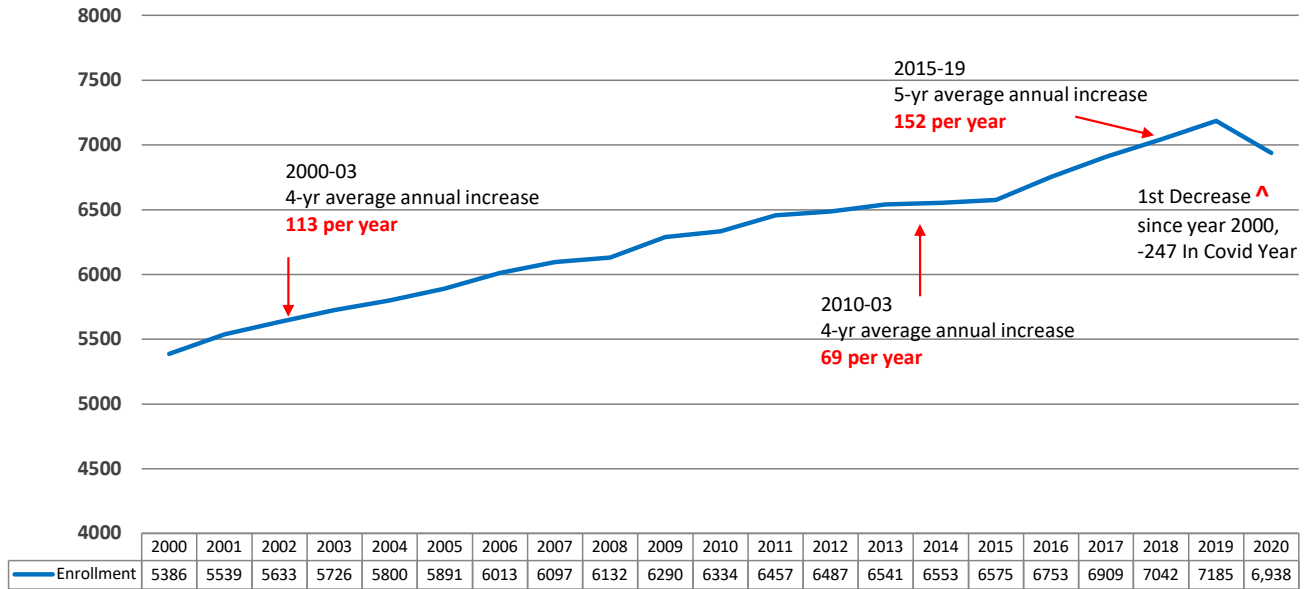


The level of sales of existing housing, at 600 units per year in year 2017, has a stronger impact on enrollments than does permitting for new housing, which for the 10-year period preceding 2018 averaged just 27 units per year.

The source of the Residential Permitting data changed in 2018 from **MLS Trend** to **Bright MLS** such that the comparative post-2017 analysis may not be consistent due to methodology changes.

Enrollments (red line is enrollments divided by 10) show no strong correlation with permitting or sales, except for the possibility that sales above 500 to 600 units per year generates growth. It is possible that decreases in enrollment will occur as annual sales move below 600 units.

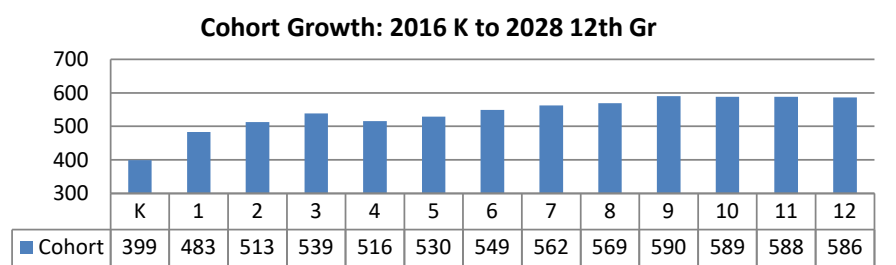
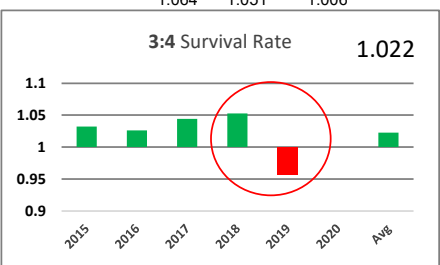
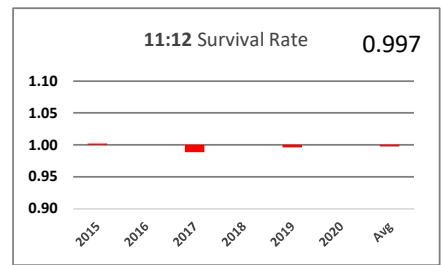
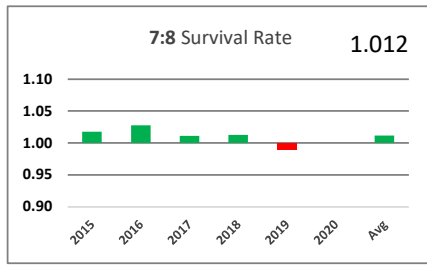
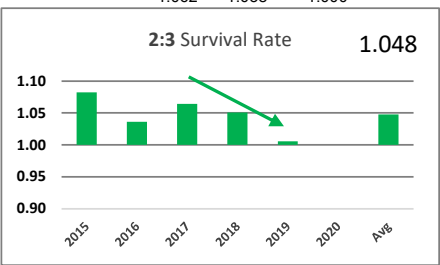
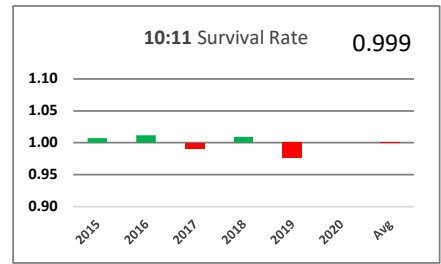
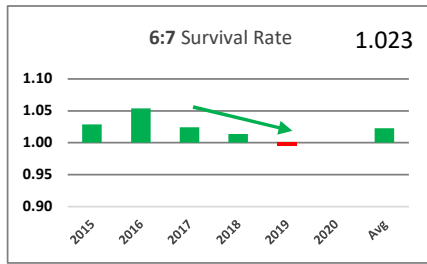
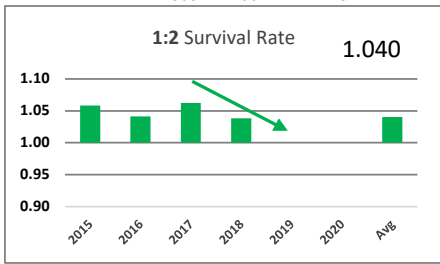
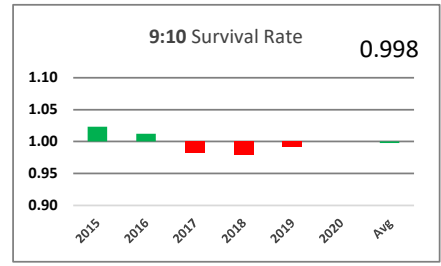
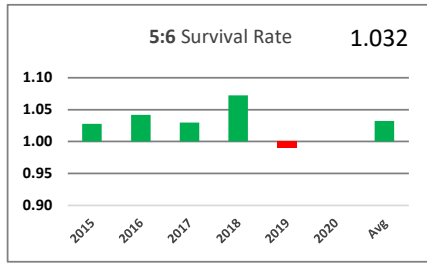
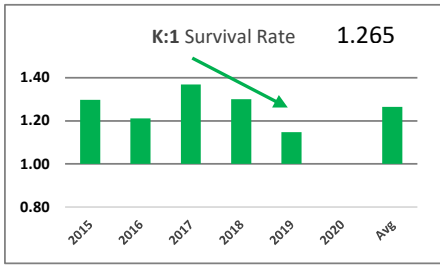
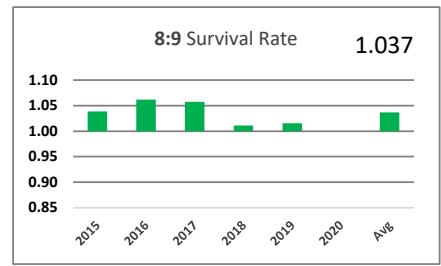
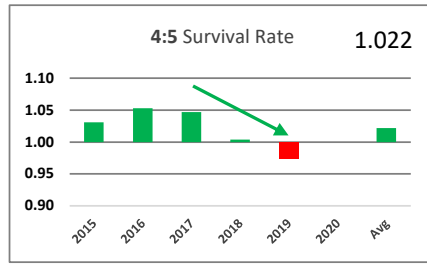
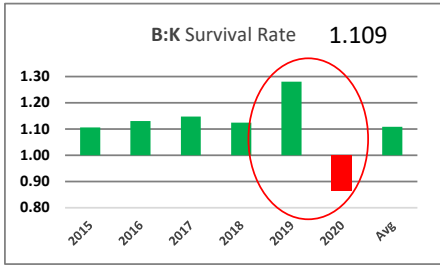
**TESD Enrollment History Oct 2000-2020**



Recent enrollment growth averaging 152 new students per year from 2015-19, is reversed by a 247-student decrease.

Tredyffrin-Easttown School District  
**Grade Level Cohort Survival Ratios**  
**October 2020 Enrollment Projection**

Each Year and Averages



**Yearly & Cohort Enrollment Comparisons**

**Comparison: Projected & Actual for October 2020**

Grade		K	1	2	3	4	K-4	5	6	7	8	6-8	9	10	11	12	9-12	G Tot
<b>Oct 1,2020</b>	<b>Projected</b>	416	541	528	567	559	2611	556	590	592	610	2348	668	564	576	546	2354	7313
<b>Oct 1,2020</b>	<b>Actual</b>	316	482	506	543	516	2363	525	564	573	594	2256	658	555	561	545	2319	6938
	Delta	-100	-59	-22	-24	-43	-248	-31	-26	-19	-16	-92	-10	-9	-15	-1	-35	-375

**Comparison: Actual for Oct 2019 & Actual for Oct 2020**

Grade		K	1	2	3	4	K-4	5	6	7	8	6-8	9	10	11	12	9-12	G Tot
<b>Oct 1, 2019</b>	<b>Actual</b>	420	506	540	539	539	2544	570	576	600	648	2394	560	575	547	565	2247	7185
<b>Oct 1, 2020</b>	<b>Actual</b>	316	482	506	543	516	2363	525	564	573	594	2256	658	555	561	545	2319	6938
	Delta	-104	-24	-34	4	-23	-181	-45	-12	-27	-54	-138	98	-20	14	-20	72	-247

NOTE: The difference between 565 Grade 12 Graduates and 316 entering Kindergarten is 249 fewer students

**Comparison: Cohorts from Oct 2019 to Oct 2020**

Grade		K:1	1:2	2:3	3:4	Elem	4:5	5:6	6:7	7:8	Middle	8:9	9:10	10:11	11:12	High	G Tot
<b>Oct 1, 2019</b>	<b>Actual</b>	420	506	540	539	2005	539	570	576	600	2285	648	560	575	547	2330	6620
<b>Oct 1, 2020</b>	<b>Actual</b>	482	506	543	516	2047	525	564	573	594	2256	658	555	561	545	2319	6622
	Delta	62	0	3	-23	42	-14	-6	-3	-6	-29	10	-5	-14	-2	-11	2

NOTE: Not including K:1 gain, Elementary loss is 20, Middle School loss is 30 and High School loss is about 10.

Tredyffrin-Easttown School District

**Exit Reason by Grade**

Prior to Oct 2019	Grade	K	1	2	3	4	K-4	5	6	7	8	5-8	9	10	11	12	9-12	G Tot
1	Graduated														1	532	533	533
2	No Longer Eligible	11	27	25	28	24	115	33	21	16	24	94	13	12	11	18	54	263
3	Resident in Other Setting	3	5	8	8	5	29	10	7	14	12	43	28	11	12	3	54	126
<b>TOTAL wo/ Grad</b>		14	32	33	36	29	144	43	28	30	36	137	41	23	23	21	108	389

2- No Longer Eligible includes Left Pa, Transferred within Pa Public, Deceased, Truant,

3- Resident in Other Settings includes Non-Public, Private, Homeschool, Charter or Cyber Schools

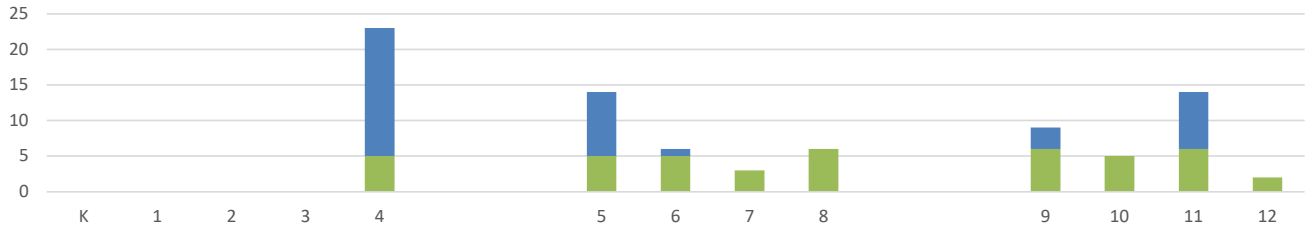
Prior to Oct 2020	Grade	K	1	2	3	4	K-4	5	6	7	8	5-8	9	10	11	12	9-12	G Tot
1	Graduated														1	559	560	560
2	No Longer Eligible	4	25	17	26	18	90	19	15	12	13	59	13	8	10	13	44	193
3	Resident in Other Setting	8	22	24	23	21	98	31	28	16	21	96	27	13	7	1	48	242
<b>TOTAL wo/ Grad</b>		12	47	41	49	39	188	50	43	28	34	155	40	21	17	14	92	435

Oct 2020 minus Oct 2019	Grade	K	1	2	3	4	K-4	5	6	7	8	5-8	9	10	11	12	9-12	G Tot
1	Graduated														0	27	27	27
2	No Longer Eligible	-7	-2	-8	-2	-6	-25	-14	-6	-4	-11	-35	0	-4	-1	-5	-10	-70
3	Resident in Other Setting	6	17	16	15	16	69	21	21	2	9	53	-1	2	-5	-2	-6	116
<b>TOTAL wo/ Graduates</b>		-1	15	8	13	10	44	7	15	-2	-2	18	-1	-2	-6	-7	-16	46

70 fewer students in the No Longer Eligible category are all due to fewer transfers out of state and contribute to increases Survival Rates. This is interpreted to mean that families of **70 students chose to stay in TESD** during the disruptive pandemic.

**116 additional students chose to leave TESD**, most likely as a result of the disruptive pandemic. They are in the Resident in Other settings categories result from 19 additional students choosing Home Schooling, 100 additional students choosing Non-Public or Private Schools while 3 fewer students choose Charter or Cyber Schools.

**Cohort Change**  
 Acceptable 1% and Beyond



- K** Students delay registration and entry into School District. Prior B:K Average SR of 1.139 is only .866 this year
- 1** Students delay registration and entry into School District. Prior K:1 Average SR of 1.288 is only 1.148 this year

Kindergarten and Grade 1 are not analyzed here as a Cohort because they are always significantly different from the norm and are addressed elsewhere.

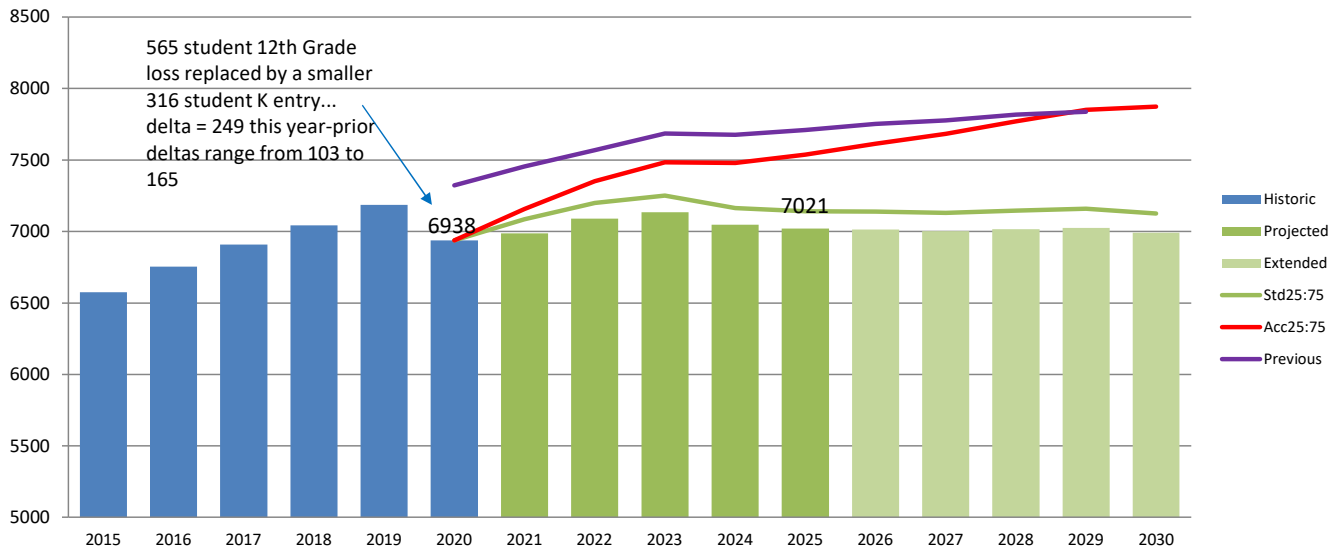
The change in the Cohort for Grades 2, 3, 6, 7, 8, 10 and 12 are all within an acceptable 1%.

The change in the Cohort for Grades 4, 5, 9 and 11 are outside the 1% acceptable level

	565	Graduated 12th Grade
	316	Enter Kindergarten
<b>Losses &gt;</b>	<u>249</u>	12:K Replacement loss
	19	additional to Homeschool
	<u>100</u>	additional to Private
	368	Sum of all losses
	<u>-247</u>	Year to Year Loss
<b>Growth &gt;</b>	121	possible Growth
	<u>-70</u>	fewer moving Out of State
	<b>51</b>	probable In-Migration, this school year



**District Wide Enrollments K-12**



2.0

**Standard**

	TOTAL	Average	Change	%Chg
<b>Historic</b>				
2015	6,575			
2016	6,753			
2017	6,909			
2018	7,042	6,900		
2019	7,185			
2020	6,938		363	5.5%
<b>Projected</b>				
2021	6,986			
2022	7,089			
2023	7,135	7,056		
2024	7,047			
2025	7,021		83	1.2%
<b>Extended</b>				
2026	7,014			
2027	7,003			
2028	7,017	7,010		
2029	7,026			
2030	6,992		-29	-0.4%

2.02

**Standard + 25:75**

TOTAL	Average	Change	%Chg
6,938			
7,086			
7,199			
7,250	7,169		
7,165			
7,142		209	3.0%
7,138			
7,130			
7,146	7,147		
7,159			
7,126		-13	-0.2%

2.12

**Accelerated + 25:75**

TOTAL	Average	Change	%Chg
6,938			
7,157			
7,351			
7,484	7,403		
7,479			
7,536		604	8.7%
7,613			
7,682			
7,771	7,766		
7,850			
7,872		339	4.4%

71 students are added to the standard projection (Approved ) from the "above average" new housing. An additional 14 students might be yielded by Planned Housing.

District Enrollment at the end of the 5-year projection period is at 7,021 , a decrease of 83 students, or about 6 students per grade. This is the first decrease in District Enrollment in over 20 years. How much is due to Covid-19, How much is the start of a change in overall pattern?

11 of 13 Grade Level Survival Rates (S/Rs) are below the prior 5-year rates.

**Alternate Projections**

Projections are made using a Standard Methodology and with adjustments as follows.

**2.00** This projection uses the standard methods utilizing all Survival Rates from six years of Actual Enrollments including this years that are impacted by the pandemic, plus the addition of **71 students from new housing**.

**2.02** This projection uses the standard methods utilizing all Survival Rates from six years of Actual Enrollments including this years that are impacted by the pandemic, plus the addition of 71 students from new housing,...**plus 100 "delayed entry" students** are added next year as 25 to Kindergarten and 75 to 1st Grade.

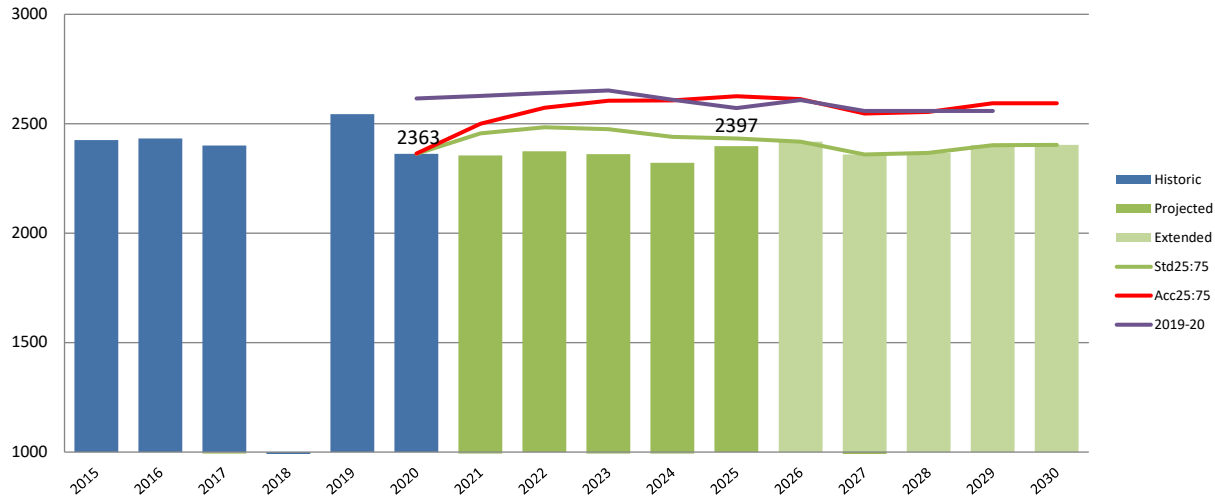
**2.12** This Accelerated projection uses the standard methods utilizing **Survival Rates from only five of six years of Actual Enrollments**, NOT including this years that are impacted by the pandemic, plus the addition of 71 students from new housing,...**plus 100 "delayed entry" students** are added next year as 25 to Kindergarten and 75 to 1st Grade.

Tredyffrin-Easttown School District

**Elementary K-Grade 4 Enrollments**

		2.00					STD	Std25:75 Acc25:75					
		29					41	Students from approved plus planned housing					
		K-4					Period	Period	Previous			2.02	2.12
		K	1	2	3	4	TOTAL	Average	Change	% Inc	2019-20		
<b>Historic</b>	<b>2015</b>	356	496	462	529	582	<b>2,425</b>						
	<b>2016</b>	399	462	525	500	546	<b>2,432</b>						
	<b>2017</b>	380	483	481	544	513	<b>2,401</b>						
	<b>2018</b>	389	520	513	512	568	<b>2,502</b>	2,445					
	<b>2019</b>	420	506	540	539	539	<b>2,544</b>						
	<b>2020</b>	316	482	506	543	516	<b>2,363</b>		-62	-2.6%	2,615	2,363	2,363
<b>Projected</b>	<b>2021</b>	359	402	504	533	558	<b>2,355</b>				2,627	2,455	2,499
	<b>2022</b>	418	458	421	531	547	<b>2,374</b>				2,640	2,484	2,573
	<b>2023</b>	372	529	476	441	543	<b>2,361</b>	2,362			2,651	2,475	2,606
	<b>2024</b>	352	470	550	499	451	<b>2,322</b>				2,609	2,440	2,606
	<b>2025</b>	377	445	489	576	510	<b>2,397</b>		34	1.5%	2,572	2,432	2,625
	<b>Extended</b>	<b>2026</b>	377	477	463	513	589	<b>2,418</b>				2,608	2,418
<b>2027</b>		377	477	496	485	524	<b>2,359</b>				2,559	2,359	2,546
<b>2028</b>		377	477	496	520	496	<b>2,366</b>	2,390			2,558	2,366	2,553
<b>2029</b>		377	477	496	520	532	<b>2,403</b>				2,558	2,403	2,594
<b>2030</b>		377	477	496	520	532	<b>2,403</b>		6	0.2%	2,403	2,403	2,594

Elementary K-Gr 4 Enrollments



		2.00						Std
		Standard						0:0
		Section Counts						2.00
		Max. Section Size						
		K	1	2	3	4	Total	
<b>Historic</b>	<b>2015</b>	16	22	19	20	22	99	
	<b>2016</b>	17	20	22	19	21	100	
	<b>2017</b>	17	21	20	21	20	99	
	<b>2018</b>	17	23	21	20	22	103	
	<b>2019</b>	18	22	23	21	21	104	
	<b>2020</b>	14	21	21	21	20	97	
<b>Projected</b>	<b>2021</b>	16	18	21	21	22	<b>96</b>	
	<b>2022</b>	18	20	18	21	21	<b>97</b>	
	<b>2023</b>	16	23	20	17	21	<b>97</b>	
	<b>2024</b>	15	21	23	19	17	<b>95</b>	
	<b>2025</b>	16	19	20	22	20	<b>98</b>	
	<b>Extended</b>	<b>2026</b>	17	21	19	20	23	<b>99</b>
<b>2027</b>		17	21	21	19	20	<b>97</b>	
<b>2028</b>		17	21	21	20	19	<b>97</b>	
<b>2029</b>		17	21	21	20	21	<b>99</b>	
<b>2030</b>		17	21	21	20	21	<b>99</b>	

		2.02						2.12					
		Standard + 25:75						Accelerated + 25:75					
		K	1	2	3	4	Total	K	1	2	3	4	Total
		23	23	24	26	26		23	23	24	26	26	
		17	21	21	21	22	<b>101</b>	17	21	21	21	22	<b>102</b>
		18	21	21	21	21	<b>102</b>	19	23	21	21	22	<b>106</b>
		16	23	21	20	21	<b>102</b>	17	25	23	21	22	<b>107</b>
		15	21	23	21	21	<b>100</b>	16	22	25	22	22	<b>107</b>
		16	19	20	22	21	<b>99</b>	17	21	22	24	23	<b>107</b>
		17	21	19	20	23	<b>99</b>	17	22	21	22	25	<b>107</b>
		17	21	21	19	20	<b>97</b>	17	22	22	20	22	<b>105</b>
		17	21	21	20	19	<b>97</b>	17	22	22	22	21	<b>105</b>
		17	21	21	20	21	<b>99</b>	17	22	22	22	23	<b>106</b>
		17	21	21	20	21	<b>99</b>	17	22	22	22	23	<b>106</b>

**NOTE:** District-wide Section counts, because they are "Consolidated" may be fewer than the sum of the individual schools. The more accurate modeling is the sum of the section counts of the individual schools.

**Alternates Description**

2.00 - Standard projection with housing overlay

2.02 - Standard projection 2.00... plus 25 returned to K and 75 returned to Grade 1 next year

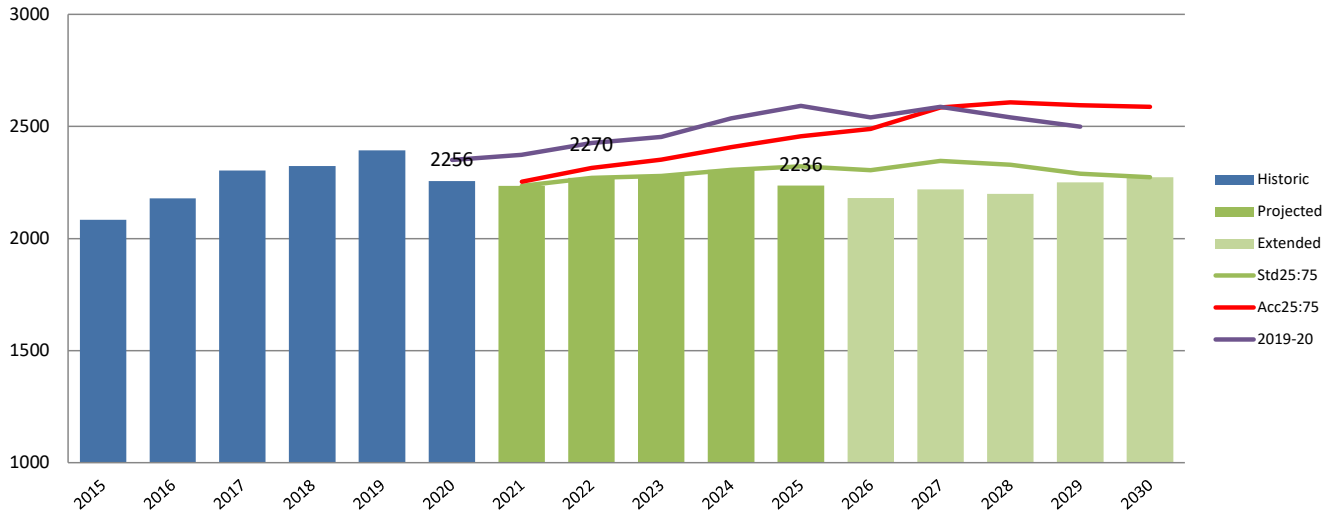
2.02 - Accelerateds projection 2.10... using prior SRs w/ this years lower SR, plus 25 returned to K and 75 returned to Grade 1 next year

Tredyffrin-Easttown School District

**Middle School Grade 5-8 Enrollments**

		Students from approved housing to these grades									2.02	2.12
16		Students from approved plus planned housing					Gr 5-8	Period	Period	Previous	Std25:75	Acc25:75
20		5	6	7	8	TOTAL	Average	Change	% Inc	2019-20		
<b>Historic</b>	<b>2015</b>	506	525	511	542	<b>2,084</b>						
	<b>2016</b>	600	520	540	520	<b>2,180</b>						
	<b>2017</b>	575	625	548	555	<b>2,303</b>						
	<b>2018</b>	537	592	640	554	<b>2,323</b>	2257					
	<b>2019</b>	570	576	600	648	<b>2,394</b>						
	<b>2020</b>	525	564	573	594	<b>2,256</b>		172	8.3%	2,351		
<b>Projected</b>	<b>2021</b>	530	544	579	582	<b>2,235</b>				2,374	2,235	2,254
	<b>2022</b>	572	549	560	589	<b>2,270</b>				2,425	2,270	2,315
	<b>2023</b>	559	591	562	566	<b>2,279</b>	2265			2,453	2,279	2,352
	<b>2024</b>	555	577	605	569	<b>2,306</b>				2,536	2,306	2,407
	<b>2025</b>	461	572	591	612	<b>2,236</b>		-20	-0.9%	2,591	2,321	2,457
	<b>Extended</b>	<b>2026</b>	521	476	586	598	<b>2,180</b>				2,541	2,304
<b>2027</b>		602	538	487	592	<b>2,219</b>				2,587	2,346	2,584
<b>2028</b>		535	621	550	493	<b>2,200</b>	2225			2,540	2,329	2,607
<b>2029</b>		506	553	635	557	<b>2,251</b>				2,499	2,290	2,595
<b>2030</b>		543	523	565	643	<b>2,274</b>		38	1.7%	2,274	2,274	2,588

**Middle School Gr 5-8 Enrollments**



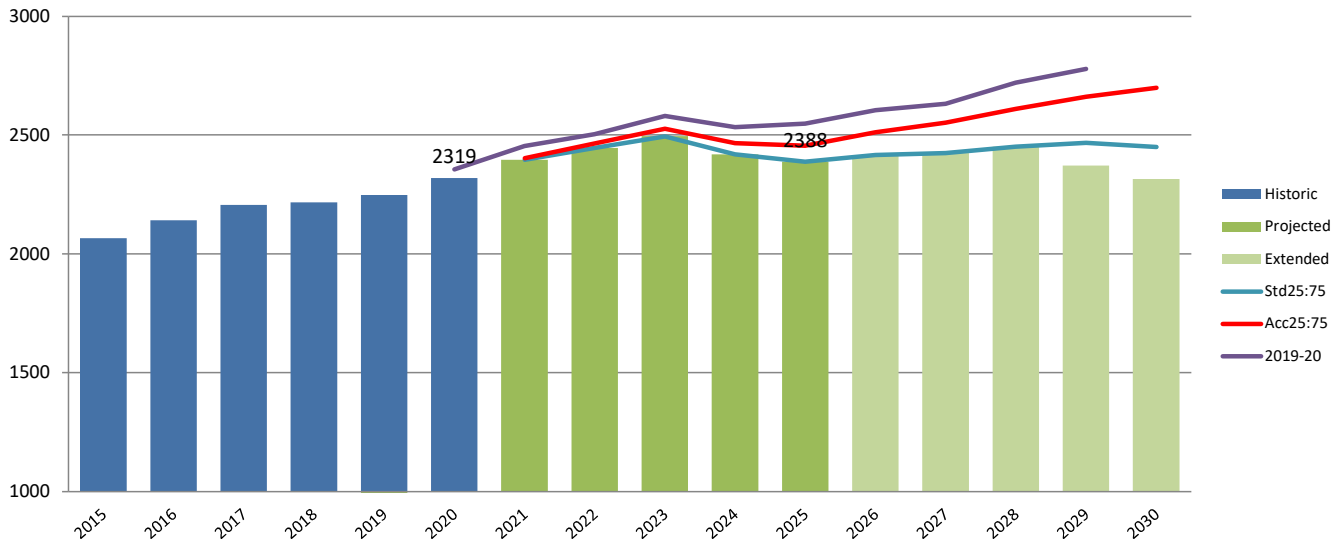
Middle School enrollments are projected between 2,236 and 2,457 at the end of the 5-year projection period. The recent high was 2,394 in October 2019.

Tredyffrin-Easttown School District

**High School Grade 9-12 Enrollments**

	22	Students from approved housing to these grades								2.02	2.12	
	26	Students from approved plus planned housing				Gr 9-12	Period	Period		Previous	Std25:75	Acc25:75
		9	10	11	12	TOTAL	Average	Change	% Inc	2019-20		
<b>Historic</b>	<b>2015</b>	511	550	500	505	<b>2,066</b>						
	<b>2016</b>	563	523	554	501	<b>2,141</b>						
	<b>2017</b>	552	570	529	554	<b>2,205</b>						
	<b>2018</b>	587	542	565	523	<b>2,217</b>	2199					
	<b>2019</b>	560	575	547	565	<b>2,247</b>						
	<b>2020</b>	658	555	561	545	<b>2,319</b>		253	12.2%	2,356		
<b>Projected</b>	<b>2021</b>	618	659	557	562	<b>2,396</b>				2,453	2,396	2,403
	<b>2022</b>	606	620	661	558	<b>2,445</b>				2,503	2,445	2,464
	<b>2023</b>	611	605	619	660	<b>2,495</b>	2428			2,581	2,495	2,526
	<b>2024</b>	587	609	605	618	<b>2,419</b>				2,533	2,419	2,466
	<b>2025</b>	590	586	609	603	<b>2,388</b>		69	2.9%	2,547	2,388	2,455
	<b>Extended</b>	<b>2026</b>	634	589	585	607	<b>2,415</b>				2,604	2,415
<b>2027</b>		620	633	588	584	<b>2,424</b>				2,631	2,424	2,552
<b>2028</b>		614	618	632	586	<b>2,451</b>	2396			2,720	2,451	2,610
<b>2029</b>		511	613	618	631	<b>2,372</b>				2,779	2,466	2,661
<b>2030</b>		577	510	612	616	<b>2,315</b>		-73	-3.0%	2,449	2,449	2,699

**Conestoga High School Grade 9-12 Enrollments**



High School enrollments are projected between 2,388 and 2,455 at the end of the 5-year projection period. In all three scenarios, enrollment decreases in the last two years of the -year projection period.

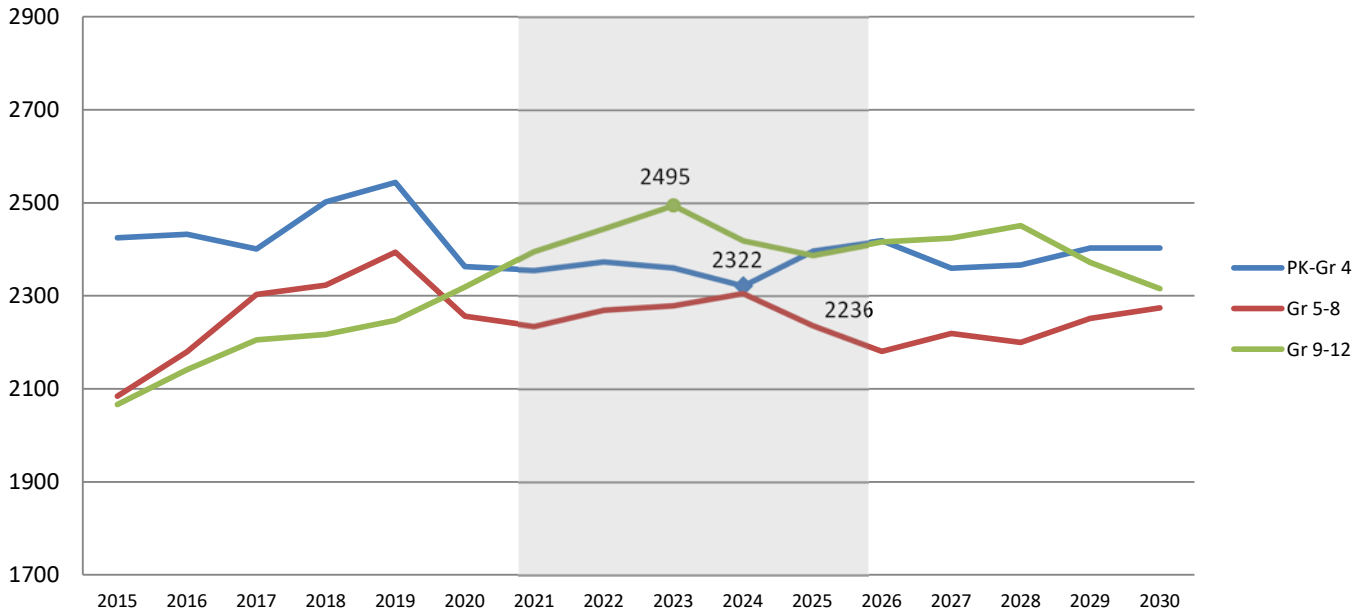
Tredyffrin-Easttown School District

**Comparative 2.00 Standard Enrollments by Grade Level Organization**

		K-4	Gr 5-8	Gr 9-12	TOTAL	
<b>Historic</b>	<b>2015</b>	2425	2084	2066	6575	
	<b>2016</b>	2432	2180	2141	6753	
	<b>2017</b>	2401	2303	2205	6909	
	<b>2018</b>	2502	2323	2217	7042	
	<b>2019</b>	2544	2394	2247	7185	
	<b>2020</b>	2363	2256	2319	6938	
<b>Projected</b>	<b>2021</b>	2355	2235	2396	6986	
	<b>2022</b>	2374	2270	2445	7089	
	<b>2023</b>	2361	2279	2495	7135	
	<b>2024</b>	2322	2306	2419	7047	
	<b>2025</b>	2397	2236	2388	7021	
<b>Extended</b>	<b>2026</b>	2418	2180	2415	7014	
	<b>2027</b>	2359	2219	2424	7003	
	<b>2028</b>	2366	2200	2451	7017	
	<b>2029</b>	2403	2251	2372	7026	
	<b>2030</b>	2403	2274	2315	6992	

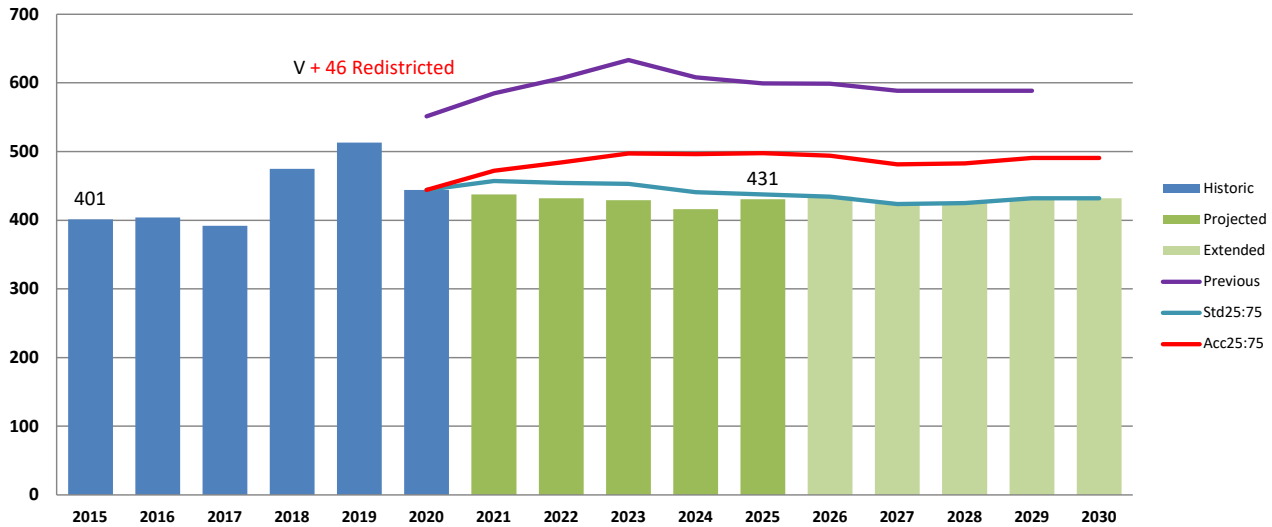
■ HIGHS  
■ LOWS

**Comparative Enrollments by Grade Level Organization**



As per the 2.00 Standard projection...and In the 5-year projection period,  
 High School enrollments peak in the 3rd year.  
 Middle School and Elementary School enrollments peaked in October 2019..

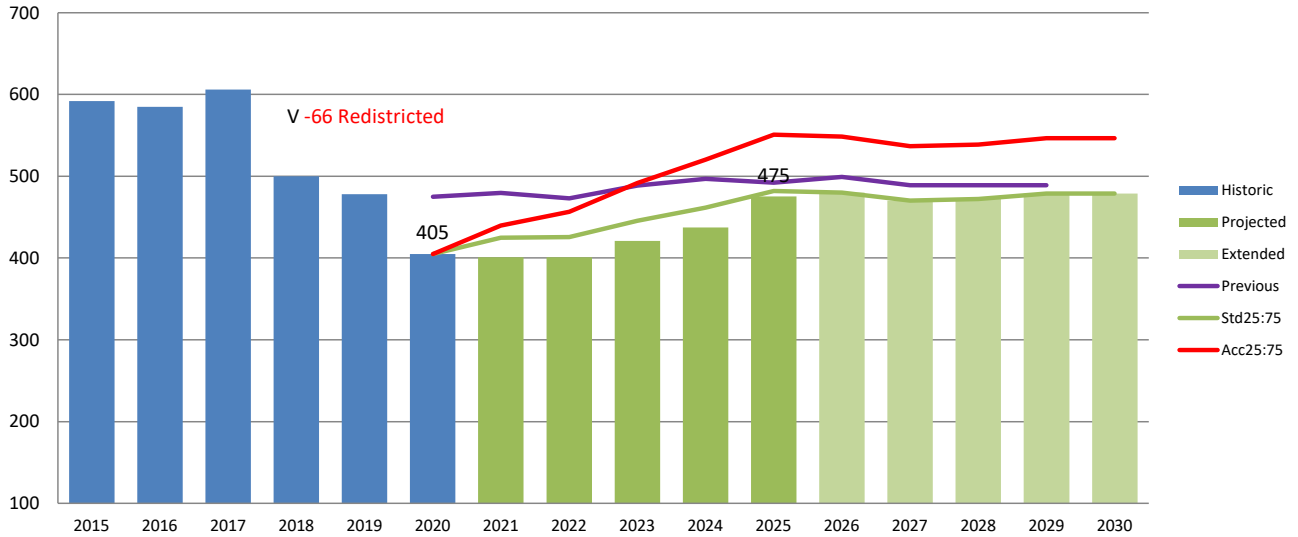
**Beaumont ES Enrollment by Year**



		29 students from new housing yields						Std25:75		Acc25:75	
		K	1	2	3	4	TOTAL	Average	Change	2.02	2.12
<b>Historic</b>	2015	59	76	79	96	91	<b>401</b>				
	2016	57	79	88	82	98	<b>404</b>				
	2017	60	65	85	94	88	<b>392</b>				
	2018	68	97	98	105	107	<b>475</b>	438			
	2019	99	92	110	106	106	<b>513</b>				
	2020	57	88	92	106	101	<b>444</b>	43	10.7%	444	444
<b>Projected</b>	2021	64	70	98	96	110	<b>437</b>			457	472
	2022	74	78	77	103	99	<b>432</b>			454	484
	2023	66	90	87	81	106	<b>429</b>	429		453	497
	2024	62	80	100	91	83	<b>416</b>			441	496
	2025	67	76	89	105	94	<b>431</b>	-13	-3.1%	438	498
<b>Extended</b>	2026	67	81	85	93	108	<b>434</b>			434	494
	2027	67	81	91	88	96	<b>424</b>			424	481
	2028	67	81	91	95	91	<b>425</b>	429		425	483
	2029	67	81	91	95	98	<b>432</b>			432	491
	2030	67	81	91	95	98	<b>432</b>	1	0.3%	432	491

Section Counts	Max. Section Size	Std					Total	25:75					Total	27:75					Total		
		K	1	2	3	4		2.00	K	1	2	3		4	2.02	K	1	2		3	4
<b>Historic</b>	2015	3	4	4	4	4	19														
	2016	3	4	4	4	4	19														
	2017	3	3	4	4	4	18														
	2018	3	5	5	5	5	23														
	2019	5	4	5	5	5	24														
	2020	3	4	4	5	4	20														
<b>Projected</b>	2021	3	4	5	4	5	21	3	4	5	4	5	21	4	4	5	4	5	5	22	
	2022	4	4	4	4	4	20	4	4	4	4	4	20	4	5	5	5	4	5	23	
	2023	3	4	4	4	5	20	3	4	4	4	5	20	3	5	5	5	5	5	23	
	2024	3	4	5	4	4	20	3	4	5	4	4	20	3	4	5	5	5	5	22	
	2025	3	4	4	5	4	20	3	4	4	5	4	20	4	4	5	5	5	5	23	
<b>Extended</b>	2026	3	4	4	4	5	20	3	4	4	4	5	20	4	4	5	5	5	5	23	
	2027	3	4	4	4	4	19	3	4	4	4	4	19	4	4	5	4	5	5	22	
	2028	3	4	4	4	4	19	3	4	4	4	4	19	4	4	5	5	5	5	23	
	2029	3	4	4	4	4	19	3	4	4	4	4	19	4	4	5	5	5	5	23	
	2030	3	4	4	4	4	19	3	4	4	4	4	19	4	4	5	5	5	5	23	

**Devon ES Enrollment by Year**



**Devon Elementary School**

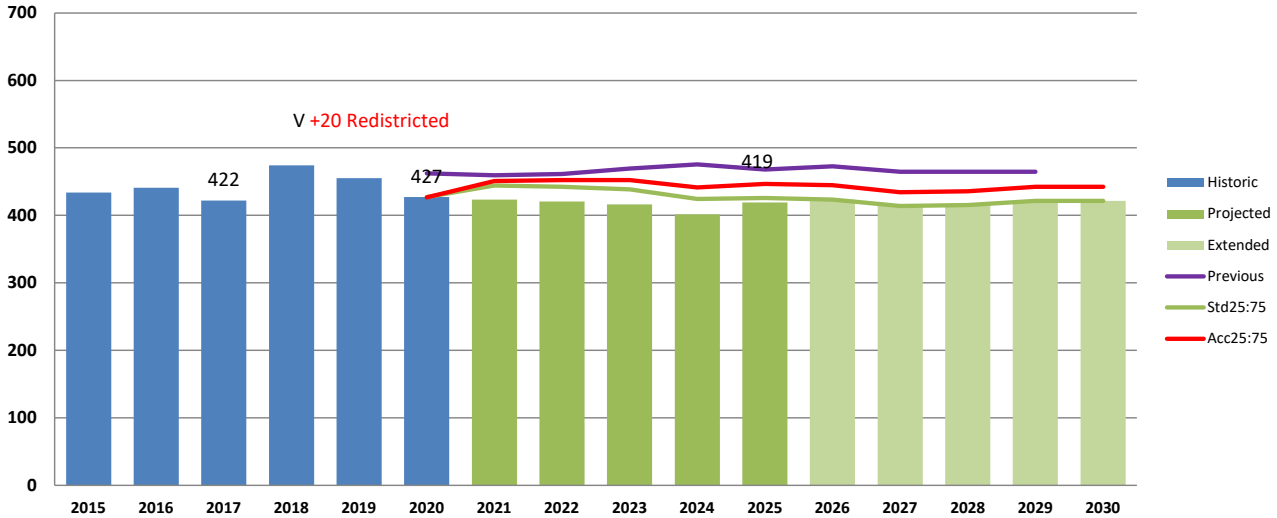
0 students from new housing yields  
 0 students at this elementary school

Std25:75 Acc25:75  
**2.02 2.12**

		K	1	2	3	4	TOTAL	Average	Change		
<b>Historic</b>	2015	90	133	112	110	147	<b>592</b>				
	2016	103	123	135	120	104	<b>585</b>				
	2017	104	123	120	138	121	<b>606</b>				
	2018	62	111	94	107	126	<b>500</b>	528			
	2019	72	90	114	96	106	<b>478</b>				
	2020	49	80	80	109	87	<b>405</b>	-187	-31.6%	405	405
<b>Projected</b>	2021	76	62	78	81	104	<b>401</b>			425	440
	2022	88	96	60	79	77	<b>401</b>			426	456
	2023	79	112	94	61	75	<b>421</b>	427		446	492
	2024	75	100	109	96	58	<b>437</b>			461	520
	2025	80	95	98	111	91	<b>475</b>	70	17.5%	482	551
	<b>Extended</b>	2026	80	102	92	99	106	<b>480</b>			480
2027		80	102	99	94	95	<b>470</b>			470	537
2028		80	102	99	101	90	<b>472</b>	476		472	539
2029		80	102	99	101	96	<b>479</b>			479	547
2030		80	102	99	101	96	<b>479</b>	4	0.7%	479	547

	Max. Section Size	Section Counts					Std	25:75 Std					27:75						
		K	1	2	3	4	Total	K	1	2	3	4	Total	Accel					
<b>Historic</b>	2015	4	6	5	5	6	26	23	23	24	26	26	2.00	23	23	24	26	26	2.12
	2016	5	6	6	5	4	26												
	2017	5	6	5	6	5	27												
	2018	3	5	4	5	5	22												
	2019	4	4	5	4	5	22												
	2020	3	4	4	5.0	4	20												
<b>Projected</b>	2021	4	3	4	4	5	20	4	4	4	4	5	21	4	4	4	4	5	21
	2022	4	5	3	4	3	19	4	5	4	4	3	20	5	6	4	4	4	23
	2023	4	5	4	3	3	19	4	5	5	4	3	21	4	6	5	4	4	23
	2024	4	5	5	4	3	21	4	5	5	4	3	21	4	5	6	5	4	24
	2025	4	5	5	5	4	23	4	5	5	5	4	23	4	5	5	5	5	24
	<b>Extended</b>	2026	4	5	4	4	5	22	4	5	4	4	5	22	4	5	5	5	5
2027		4	5	5	4	4	22	4	5	5	4	4	22	4	5	5	5	5	24
2028		4	5	5	4	4	22	4	5	5	4	4	22	4	5	5	5	5	24
2029		4	5	5	4	4	22	4	5	5	4	4	22	4	5	5	5	5	24
2030		4	5	5	4	4	22	4	5	5	4	4	22	4	5	5	5	5	24

**Hillside ES Enrollment by Year**

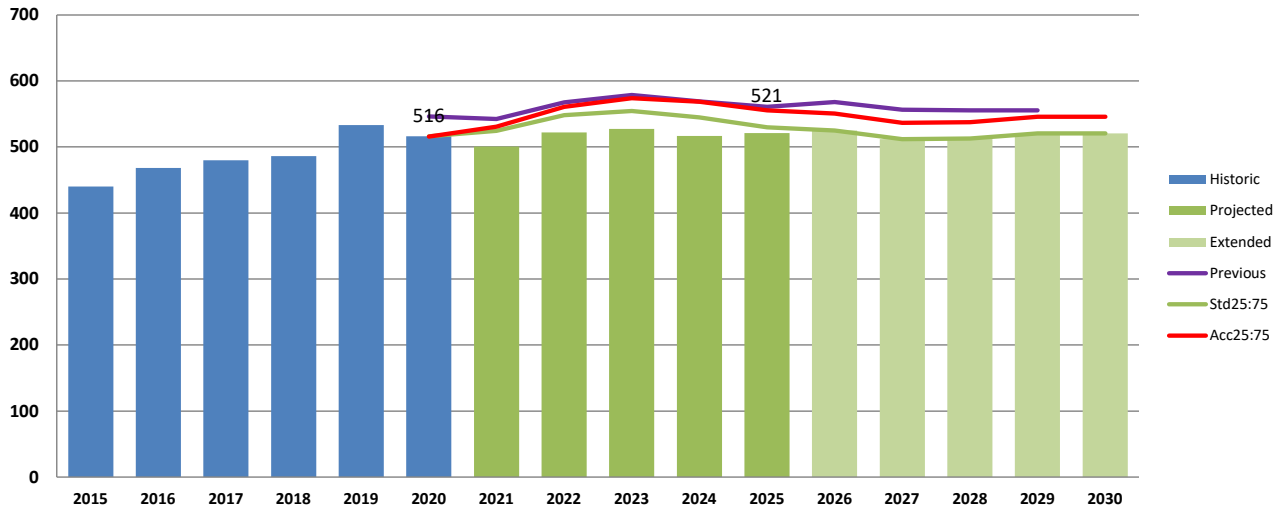


Hillside Elementary School		4 students from new housing yields					Std25:75		Acc25:75		
		2 students at this elementary school					2.02		2.12		
		K	1	2	3	4	TOTAL	Average	Change		
<b>Historic</b>	2015	59	96	73	102	104	434				
	2016	76	78	98	81	108	441				
	2017	71	91	78	99	83	422				
	2018	84	101	101	90	98	474	442			
	2019	76	88	94	99	98	455				
	2020	57	95	89	100	86	427		-7	-1.6%	427
<b>Projected</b>	2021	67	70	94	93	101	424			444	451
	2022	78	82	69	99	93	420			442	452
	2023	69	95	81	72	99	416	416		439	452
	2024	66	85	94	85	72	402			424	441
	2025	71	80	84	99	85	419		-8	-1.9%	426
<b>Extended</b>	2026	71	86	80	88	99	424			424	445
	2027	71	86	85	83	88	414			414	434
	2028	71	86	85	89	84	415	419		415	436
	2029	71	86	85	89	90	421			421	442
	2030	71	86	85	89	90	421		2	0.5%	421

Section Counts	Max. Section Size						Std						25:75						27:75		
		K	1	2	3	4	2.00	K	1	2	3	4	2.02	K	1	2	3	4	2.12		
<b>Historic</b>	2015	3	5	4	4	4	20														
	2016	4	4	4	5	4	22														
	2017	4	4	4	4	4	20														
	2018	4	5	5	4	4	22														
	2019	4	4	4	4	4	20														
	2020	3	5	4	4	4	20														
<b>Projected</b>	2021	3	4	4	4	4	19	4	4	4	4	4	20	4	6	5	5	6	6	26	
	2022	4	4	3	4	4	19	4	4	4	4	4	20	5	6	6	5	4	4	26	
	2023	4	5	4	3	4	20	4	5	4	4	4	21	5	6	5	6	5	5	27	
	2024	3	4	4	4	3	18	3	4	4	4	4	19	3	5	4	5	5	5	22	
	2025	4	4	4	4	4	20	4	4	4	4	4	20	4	4	5	4	5	5	22	
<b>Extended</b>	2026	4	4	4	4	4	20	4	4	4	4	20	3	4	4	4	5	4	4	20	
	2027	4	4	4	4	4	20	4	4	4	4	20	4	4	4	4	5	4	5	21	
	2028	4	4	4	4	4	20	4	4	4	4	20	5	6	4	4	4	4	4	23	
	2029	4	4	4	4	4	20	4	4	4	4	20	4	6	5	4	4	4	4	23	
	2030	4	4	4	4	4	20	4	4	4	4	20	4	5	6	5	4	4	4	24	



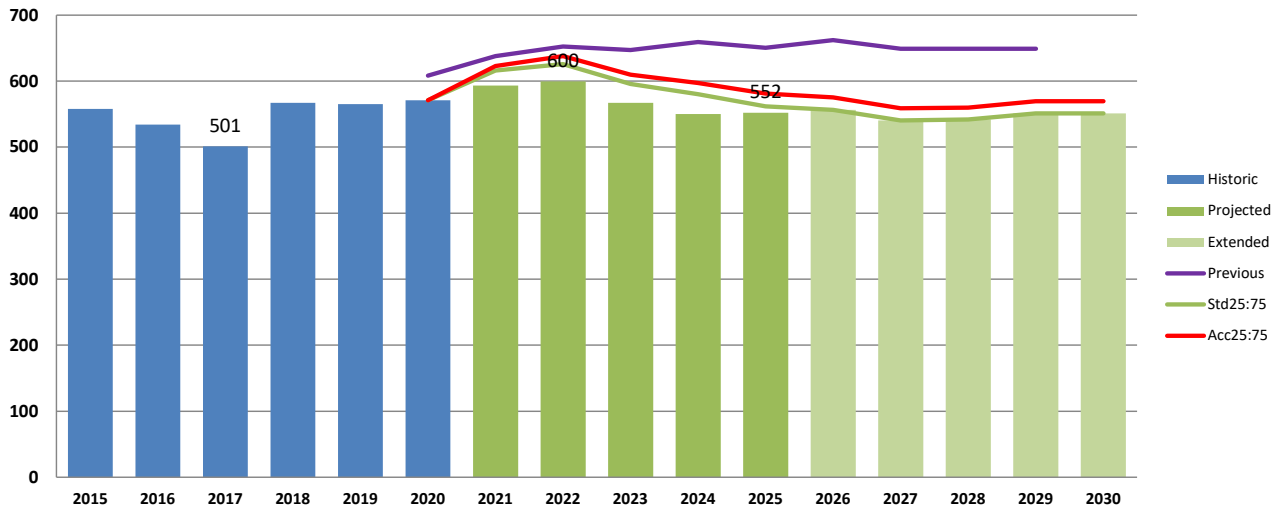
**New Eagle ES Enrollment by Year**



New Eagle Elementary School		24 students from new housing yields					9 students at this elementary school		Std25:75	Acc25:75	
		K	1	2	3	4	TOTAL	Average	Change	2.02	2.12
<b>Historic</b>	2015	83	77	85	94	101	440				
	2016	94	97	88	94	95	468				
	2017	72	115	107	90	96	480				
	2018	72	97	119	106	92	486	487			
	2019	88	105	98	125	117	533				
	2020	77	106	104	100	129	516	76	17.3%	516	516
<b>Projected</b>	2021	77	99	112	108	105	501			524	531
	2022	90	99	104	117	112	522			548	561
	2023	80	115	105	107	121	527	518		555	574
	2024	75	102	120	108	111	517			545	569
	2025	81	96	107	125	112	521	5	1.0%	530	555
	2026	81	103	101	111	129	525			525	550
<b>Extended</b>	2027	81	103	108	105	115	512			512	536
	2028	81	103	108	112	108	513	518		513	538
	2029	81	103	108	112	116	521			521	546
	2030	81	103	108	112	116	521	0	-0.1%	521	546

Section Counts	Max. Section Size	23					26					Std	25:75					27:75					
		K	1	2	3	4	Total	2.00	K	1	2	3	4	Total	2.02	K	1	2	3	4	Total	2.12	
<b>Historic</b>	2015	4	4	4	4	4	20																
	2016	5	5	4	4	4	22																
	2017	4	5	5	4	4	22																
	2018	4	5	5	5	4	23																
	2019	4	5	5	5	5	24																
	2020	4	5	5	4	5	23																
<b>Projected</b>	2021	4	5	5	5	5	24		4	6	5	5	5	25		4	6	5	5	5	25		
	2022	4	5	5	5	5	24		4	5	6	5	5	25		4	5	6	5	5	25		
	2023	4	5	5	5	5	24		4	5	5	5	5	24		4	6	5	6	5	26		
	2024	4	5	6	5	5	25		4	5	6	5	6	26		4	5	6	5	6	26		
	2025	4	5	5	5	5	24		4	5	5	5	5	24		4	5	5	6	5	25		
	2026	4	5	5	5	5	24		4	5	5	5	5	24		4	5	5	5	6	25		
<b>Extended</b>	2027	4	5	5	5	5	24		4	5	5	5	5	24		4	5	5	5	5	24		
	2028	4	5	5	5	5	24		4	5	5	5	5	24		4	5	5	5	5	24		
	2029	4	5	5	5	5	24		4	5	5	5	5	24		4	5	5	5	5	24		
	2030	4	5	5	5	5	24		4	5	5	5	5	24		4	5	5	5	5	24		

**Valley Forge ES Enrollment by Year**



Valley Forge Elementary Scho	29 students from new housing yields						Std25:75		Acc25:75		
	K	1	2	3	4	TOTAL	Average	Change	2.02	2.12	
<b>Historic</b>	2015	65	114	113	127	139	558				
	2016	69	85	116	123	141	534				
	2017	73	89	91	123	125	501				
	2018	103	114	101	104	145	567	549			
	2019	85	131	124	113	112	565				
	2020	76	113	141	128	113	571	13	2.3%	571	571
<b>Projected</b>	2021	75	103	122	154	139	593			616	623
	2022	87	102	111	133	166	600			626	638
	2023	77	117	110	120	143	567	572		595	610
	2024	73	104	126	119	128	550			580	597
	2025	78	98	111	136	128	552	-19	-3.2%	562	581
<b>Extended</b>	2026	78	105	105	121	147	556			556	575
	2027	78	105	113	114	130	541			541	559
	2028	78	105	113	123	123	542	548		542	560
	2029	78	105	113	123	132	551			551	569
	2030	78	105	113	123	132	551	-1	-0.2%	551	569

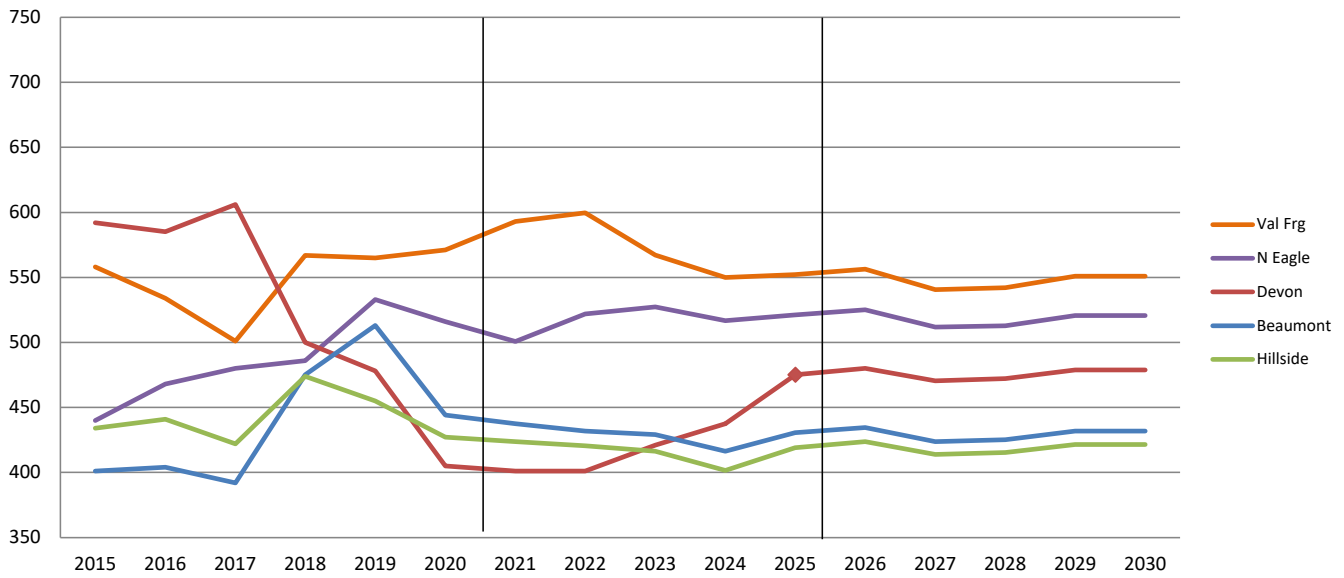
Section Counts	Max. Section Size	23					24					26					Std	
		K	1	2	3	4	Total	23	23	24	26	26	Total	25:75	27:75			
<b>Historic</b>	2015	3	5	5	5	6	24											
	2016	3	4	5	5	6	23											
	2017	4	4	4	5	5	22											
	2018	5	5	5	4	6	25											
	2019	4	6	6	5	5	26											
	2020	4	5	6	5	5	25											
<b>Projected</b>	2021	4	5	6	6	6	27	4	6	6	6	6	28	4	6	6		
	2022	4	5	5	6	7	27	4	5	6	6	7	28	4	5	6		
	2023	4	6	5	5	6	26	4	6	5	6	6	27	4	6	6		
	2024	4	5	6	5	5	25	4	5	6	5	6	26	4	5	6		
	2025	4	5	5	6	5	25	4	5	5	6	6	26	4	5	6		
<b>Extended</b>	2026	4	5	5	5	6	25	4	5	5	5	6	25	4	5	5		
	2027	4	5	5	5	5	24	4	5	5	5	5	24	4	5	5		
	2028	4	5	5	5	5	24	4	5	5	5	5	24	4	5	5		
	2029	4	5	5	5	6	25	4	5	5	5	6	25	4	5	5		
	2030	4	5	5	5	6	25	4	5	5	5	6	25	4	5	5		

Tredyffrin-Easttown School District  
**Comparative 2.00 Standard Elementary Schools**

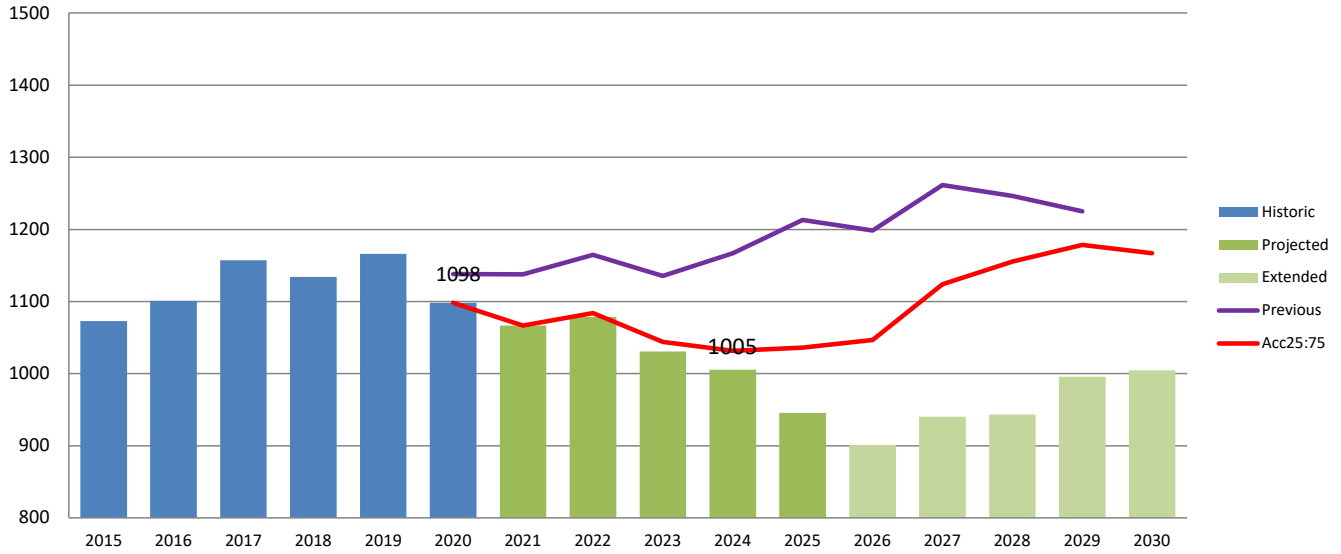
		Beaumont	Devon	Hillside	New Eagle	Valley Forge
<b>Historic</b>	<b>2015</b>	401	592	434	440	558
	<b>2016</b>	404	585	441	468	534
	<b>2017</b>	392	606	422	480	501
	<b>2018</b>	475	500	474	486	567
	<b>2019</b>	513	478	455	533	565
	<b>2020</b>	444	405	427	516	571
<b>Projected</b>	<b>2021</b>	437	401	424	501	593
	<b>2022</b>	432	401	420	522	600
	<b>2023</b>	429	421	416	527	567
	<b>2024</b>	416	437	402	517	550
	<b>2025</b>	431	475	419	521	552
<b>Extended</b>	<b>2026</b>	434	480	424	525	556
	<b>2027</b>	424	470	414	512	541
	<b>2028</b>	425	472	415	513	542
	<b>2029</b>	432	479	421	521	551
	<b>2030</b>	432	479	421	521	551

Low  
High

**Comparative Enrollments: Elementary Schools**

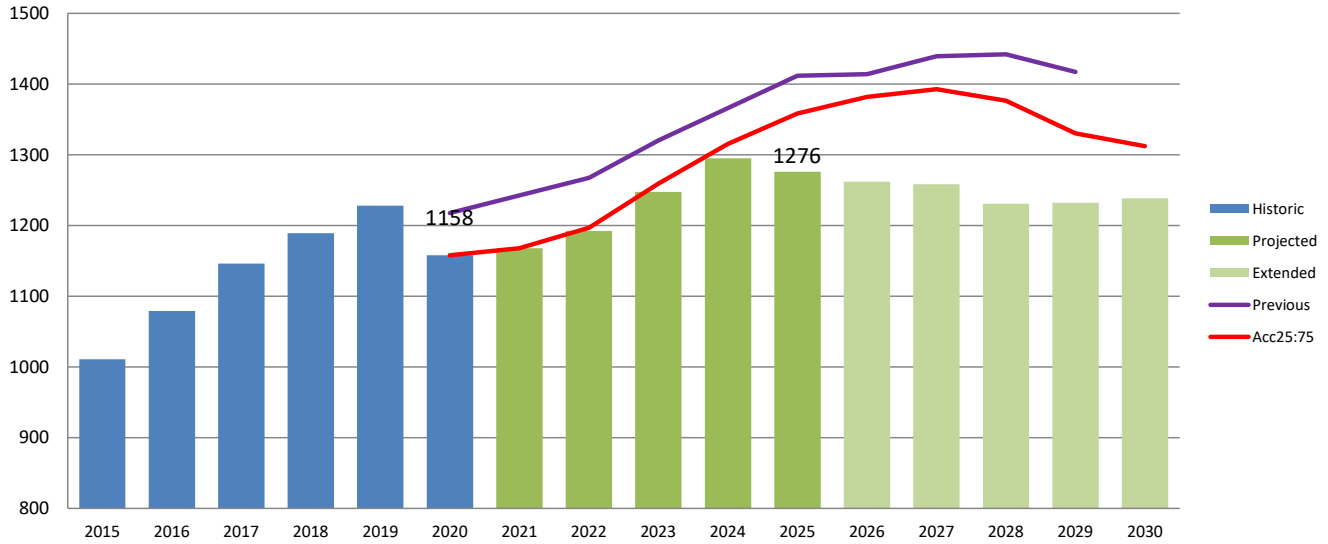


**Tredyffrin-Easttown MS Enrollment by Year**



<b>Tredyffrin-Easttown Middle School</b>						14 to 55 Students from new housing, yields 4 to 22 Students at this Middle School			Std25:75 Acc25:75	
	5	6	7	8	TOTAL	Average	Change	2.02	2.12	
<b>Historic</b>	<b>2015</b>	249	268	262	294	<b>1,073</b>				
	<b>2016</b>	302	259	276	264	<b>1,101</b>				
	<b>2017</b>	279	316	275	287	<b>1,157</b>				
	<b>2018</b>	255	285	316	278	<b>1,134</b>	1,122			
	<b>2019</b>	283	276	287	320	<b>1,166</b>				
	<b>2020</b>	256	282	274	286	<b>1,098</b>		25	2.3%	
<b>Projected</b>	<b>2021</b>	235	266	288	278	<b>1,067</b>				
	<b>2022</b>	270	245	271	292	<b>1,079</b>				
	<b>2023</b>	226	280	249	275	<b>1,031</b>	1,025			
	<b>2024</b>	233	235	286	252	<b>1,005</b>				
	<b>2025</b>	176	242	239	289	<b>946</b>		-152	-14.3%	
<b>Extended</b>	<b>2026</b>	231	182	246	242	<b>901</b>				
	<b>2027</b>	266	239	186	249	<b>940</b>				
	<b>2028</b>	236	276	244	188	<b>943</b>	957			
	<b>2029</b>	223	245	281	247	<b>995</b>				
	<b>2030</b>	239	231	249	285	<b>1,004</b>		59	6.5%	

**Valley Forge MS Enrollment by Year**



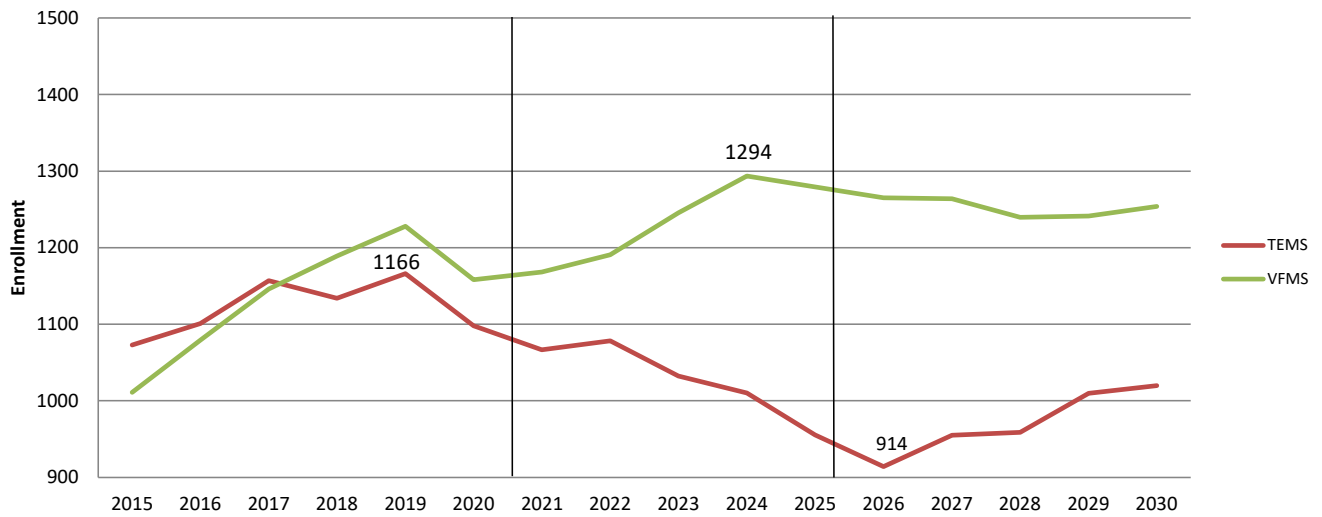
Valley Forge Middle School						12 to 45 Students from new housing, yield		Std25:75 Acc25:75			
						2 to 9		Students at this Middle School			
								<b>2.02 2.12</b>			
		5	6	7	8	TOTAL	Average	Change			
<b>Historic</b>	2015	257	257	249	248	<b>1,011</b>					
	2016	298	261	264	256	<b>1,079</b>					
	2017	296	309	273	268	<b>1,146</b>					
	2018	282	307	324	276	<b>1,189</b>	1,135				
	2019	287	300	313	328	<b>1,228</b>					
	2020	269	282	299	308	<b>1,158</b>		147	14.5%	1,158	1,158
<b>Projected</b>	2021	294	278	292	304	<b>1,168</b>				1,168	1,168
	2022	303	304	288	297	<b>1,192</b>				1,192	1,197
	2023	331	312	313	291	<b>1,248</b>	1,236			1,248	1,259
	2024	318	340	321	316	<b>1,295</b>				1,295	1,315
	2025	276	326	350	324	<b>1,276</b>		118	10.1%	1,325	1,358
<b>Extended</b>	2026	289	284	335	353	<b>1,262</b>				1,334	1,382
	2027	331	297	291	339	<b>1,258</b>				1,333	1,393
	2028	291	340	305	294	<b>1,231</b>	1,244			1,306	1,376
	2029	275	299	349	309	<b>1,232</b>				1,256	1,330
	2030	295	283	308	353	<b>1,238</b>		-38	-3.0%	1,238	1,312

Tredyffrin-Easttown School District  
**Comparative 2.00 Standard Middle Schools**

	TEMS	VFMS
<b>Historic</b>	2015	1073
	2016	1101
	2017	1157
	2018	1134
	2019	1166
	2020	1098
<b>Projected</b>	2021	1067
	2022	1078
	2023	1032
	2024	1010
	2025	955
<b>Extended</b>	2026	914
	2027	955
	2028	959
	2029	1009
	2030	1020

Low  
 High 5-Yr Projection

**Comparative Enrollments: Middle School**



**Comparative Alternate Enrollments by Grade and Year**

**Alt 2.00** Standard CS Projection w/ Housing Overlay

Tredyffrin-Easttown School District

**Middle School Grade 5-8 Enrollments**

		16 Students from approved housing to these grades				Gr 5-8
		20 Students from approved plus planned housing				
		5	6	7	8	TOTAL
<b>Historic</b>	<b>2015</b>	506	525	511	542	<b>2,084</b>
	<b>2016</b>	600	520	540	520	<b>2,180</b>
	<b>2017</b>	575	625	548	555	<b>2,303</b>
	<b>2018</b>	537	592	640	554	<b>2,323</b>
	<b>2019</b>	570	576	600	648	<b>2,394</b>
	<b>2020</b>	525	564	573	594	<b>2,256</b>
<b>Projected</b>	<b>2021</b>	530	544	579	582	<b>2,235</b>
	<b>2022</b>	572	549	560	589	<b>2,270</b>
	<b>2023</b>	559	591	562	566	<b>2,279</b>
	<b>2024</b>	555	577	605	569	<b>2,306</b>
	<b>2025</b>	461	572	591	612	<b>2,236</b>
<b>Extended</b>	<b>2026</b>	521	476	586	598	<b>2,180</b>
	<b>2027</b>	602	538	487	592	<b>2,219</b>
	<b>2028</b>	535	621	550	493	<b>2,200</b>
	<b>2029</b>	506	553	635	557	<b>2,251</b>
	<b>2030</b>	543	523	565	643	<b>2,274</b>

Std 2.00 plus  
25 K + 75 Gr 1  
**Alt 2.02 V**

	5	6	7	8	TOTAL
	506	525	511	542	<b>2,084</b>
	600	520	540	520	<b>2,180</b>
	575	625	548	555	<b>2,303</b>
	537	592	640	554	<b>2,323</b>
	570	576	600	648	<b>2,394</b>
	525	564	573	594	<b>2,256</b>
	530	544	579	582	<b>2,235</b>
	572	549	560	589	<b>2,270</b>
	559	591	562	566	<b>2,279</b>
	555	577	605	569	<b>2,306</b>
	547	572	591	612	<b>2,321</b>
	557	564	586	598	<b>2,304</b>
	602	575	577	592	<b>2,346</b>
	535	621	588	584	<b>2,329</b>
	506	553	635	595	<b>2,290</b>
	543	523	565	643	<b>2,274</b>

Accel 4 SRs plus  
25 K + 75 Gr 1  
**Alt 2.12 V**

	5	6	7	8	TOTAL
	506	525	511	542	<b>2,084</b>
	600	520	540	520	<b>2,180</b>
	575	625	548	555	<b>2,303</b>
	537	592	640	554	<b>2,323</b>
	570	576	600	648	<b>2,394</b>
	525	564	573	594	<b>2,256</b>
	536	550	583	585	<b>2,254</b>
	588	561	569	596	<b>2,315</b>
	581	614	579	579	<b>2,352</b>
	581	606	632	589	<b>2,407</b>
	584	606	624	643	<b>2,457</b>
	622	609	624	634	<b>2,489</b>
	673	648	627	635	<b>2,584</b>
	599	702	668	638	<b>2,607</b>
	567	625	723	679	<b>2,595</b>
	608	591	644	736	<b>2,579</b>

**Tredyffrin-Easttown Middle School**

14 to 55 Students from new housing, yields  
4 to 22 Students at this Middle School

	5	6	7	8	TOTAL	
<b>Historic</b>	<b>2015</b>	249	268	262	294	<b>1,073</b>
	<b>2016</b>	302	259	276	264	<b>1,101</b>
	<b>2017</b>	279	316	275	287	<b>1,157</b>
	<b>2018</b>	255	285	316	278	<b>1,134</b>
	<b>2019</b>	283	276	287	320	<b>1,166</b>
	<b>2020</b>	256	282	274	286	<b>1,098</b>
<b>Projected</b>	<b>2021</b>	235	266	288	278	<b>1,067</b>
	<b>2022</b>	270	245	271	292	<b>1,079</b>
	<b>2023</b>	226	280	249	275	<b>1,031</b>
	<b>2024</b>	233	235	286	252	<b>1,005</b>
	<b>2025</b>	176	242	239	289	<b>946</b>
<b>Extended</b>	<b>2026</b>	231	182	246	242	<b>901</b>
	<b>2027</b>	266	239	186	249	<b>940</b>
	<b>2028</b>	236	276	244	188	<b>943</b>
	<b>2029</b>	223	245	281	247	<b>995</b>
	<b>2030</b>	239	231	249	285	<b>1,004</b>

	5	6	7	8	TOTAL
	249	268	262	294	<b>1,073</b>
	302	259	276	264	<b>1,101</b>
	279	316	275	287	<b>1,157</b>
	255	285	316	278	<b>1,134</b>
	283	276	287	320	<b>1,166</b>
	256	282	274	286	<b>1,098</b>
	235	266	288	278	<b>1,067</b>
	270	245	271	292	<b>1,079</b>
	226	280	249	275	<b>1,031</b>
	233	235	286	252	<b>1,005</b>
	217	242	239	289	<b>987</b>
	249	226	246	242	<b>962</b>
	266	258	230	249	<b>1,003</b>
	236	276	263	233	<b>1,007</b>
	223	245	281	266	<b>1,015</b>
	239	231	249	285	<b>1,004</b>

	5	6	7	8	TOTAL
	249	268	262	294	<b>1,073</b>
	302	259	276	264	<b>1,101</b>
	279	316	275	287	<b>1,157</b>
	255	285	316	278	<b>1,134</b>
	283	276	287	320	<b>1,166</b>
	256	282	274	286	<b>1,098</b>
	235	266	288	278	<b>1,067</b>
	276	245	271	292	<b>1,084</b>
	234	286	249	275	<b>1,044</b>
	245	243	291	252	<b>1,032</b>
	239	254	247	295	<b>1,036</b>
	289	248	259	250	<b>1,047</b>
	309	299	253	263	<b>1,124</b>
	274	320	305	256	<b>1,155</b>
	259	284	326	309	<b>1,178</b>
	278	269	289	331	<b>1,167</b>

**Valley Forge Middle School**

12 to 45 Students from new housing, yield  
2 to 9 Students at this Middle School

	5	6	7	8	TOTAL	
<b>Historic</b>	<b>2015</b>	257	257	249	248	<b>1,011</b>
	<b>2016</b>	298	261	264	256	<b>1,079</b>
	<b>2017</b>	296	309	273	268	<b>1,146</b>
	<b>2018</b>	282	307	324	276	<b>1,189</b>
	<b>2019</b>	287	300	313	328	<b>1,228</b>
	<b>2020</b>	269	282	299	308	<b>1,158</b>
<b>Projected</b>	<b>2021</b>	294	278	292	304	<b>1,168</b>
	<b>2022</b>	303	304	288	297	<b>1,192</b>
	<b>2023</b>	331	312	313	291	<b>1,248</b>
	<b>2024</b>	318	340	321	316	<b>1,295</b>
	<b>2025</b>	276	326	350	324	<b>1,276</b>
<b>Extended</b>	<b>2026</b>	289	284	335	353	<b>1,262</b>
	<b>2027</b>	331	297	291	339	<b>1,258</b>
	<b>2028</b>	291	340	305	294	<b>1,231</b>
	<b>2029</b>	275	299	349	309	<b>1,232</b>
	<b>2030</b>	295	283	308	353	<b>1,238</b>

	5	6	7	8	TOTAL
	257	257	249	248	<b>1,011</b>
	298	261	264	256	<b>1,079</b>
	296	309	273	268	<b>1,146</b>
	282	307	324	276	<b>1,189</b>
	287	300	313	328	<b>1,228</b>
	269	282	299	308	<b>1,158</b>
	294	278	292	304	<b>1,168</b>
	303	304	288	297	<b>1,192</b>
	331	312	313	291	<b>1,248</b>
	318	340	321	316	<b>1,295</b>
	325	326	350	324	<b>1,325</b>
	311	334	335	353	<b>1,334</b>
	331	320	343	339	<b>1,333</b>
	291	340	329	347	<b>1,306</b>
	275	299	349	332	<b>1,256</b>
	295	283	308	353	<b>1,238</b>

	5	6	7	8	TOTAL
	257	257	249	248	<b>1,011</b>
	298	261	264	256	<b>1,079</b>
	296	309	273	268	<b>1,146</b>
	282	307	324	276	<b>1,189</b>
	287	300	313	328	<b>1,228</b>
	269	282	299	308	<b>1,158</b>
	294	278	292	304	<b>1,168</b>
	308	304	288	297	<b>1,197</b>
	339	316	313	291	<b>1,259</b>
	326	348	325	316	<b>1,315</b>
	337	335	357	328	<b>1,358</b>
	330	346	344	361	<b>1,382</b>
	350	339	356	348	<b>1,393</b>
	309	360	348	360	<b>1,376</b>
	292	317	370	352	<b>1,330</b>
	313	300	326	374	<b>1,312</b>

Alt 2.00

Hillside Elementary School

4 students from new housing yields  
2 students at this elementary school

Std 2.00 plus

25 K + 75 Gr 1

Alt 2.02 V

Accel only 5 Yrs plus

25 K + 75 Gr 1

Alt 2.12 V

		K	1	2	3	4	TOTAL
<b>Historic</b>	<b>2015</b>	59	96	73	102	104	<b>434</b>
	<b>2016</b>	76	78	98	81	108	<b>441</b>
	<b>2017</b>	71	91	78	99	83	<b>422</b>
	<b>2018</b>	84	101	101	90	98	<b>474</b>
	<b>2019</b>	76	88	94	99	98	<b>455</b>
	<b>2020</b>	57	95	89	100	86	<b>427</b>
<b>Projected</b>	<b>2021</b>	67	70	94	93	101	<b>424</b>
	<b>2022</b>	78	82	69	99	93	<b>420</b>
	<b>2023</b>	69	95	81	72	99	<b>416</b>
	<b>2024</b>	66	85	94	85	72	<b>402</b>
	<b>2025</b>	71	80	84	99	85	<b>419</b>
	<b>Extended</b>	<b>2026</b>	71	86	80	88	99
<b>2027</b>		71	86	85	83	88	<b>414</b>
<b>2028</b>		71	86	85	89	84	<b>415</b>
<b>2029</b>		71	86	85	89	90	<b>421</b>
<b>2030</b>		71	86	85	89	90	<b>421</b>

		K	1	2	3	4	TOTAL
<b>Historic</b>	<b>2015</b>	59	96	73	102	104	<b>434</b>
	<b>2016</b>	76	78	98	81	108	<b>441</b>
	<b>2017</b>	71	91	78	99	83	<b>422</b>
	<b>2018</b>	84	101	101	90	98	<b>474</b>
	<b>2019</b>	76	88	94	99	98	<b>455</b>
	<b>2020</b>	57	95	89	100	86	<b>427</b>
<b>Projected</b>	<b>2021</b>	72	85	94	93	101	<b>444</b>
	<b>2022</b>	78	88	84	99	93	<b>442</b>
	<b>2023</b>	69	95	87	88	99	<b>439</b>
	<b>2024</b>	66	85	94	92	88	<b>424</b>
	<b>2025</b>	71	80	84	99	92	<b>426</b>
	<b>Extended</b>	<b>2026</b>	71	86	80	88	99
<b>2027</b>		71	86	85	83	88	<b>414</b>
<b>2028</b>		71	86	85	89	84	<b>415</b>
<b>2029</b>		71	86	85	89	90	<b>421</b>
<b>2030</b>		71	86	85	89	90	<b>421</b>

		K	1	2	3	4	TOTAL
<b>Historic</b>	<b>2015</b>	59	96	73	102	104	<b>434</b>
	<b>2016</b>	76	78	98	81	108	<b>441</b>
	<b>2017</b>	71	91	78	99	83	<b>422</b>
	<b>2018</b>	84	101	101	90	98	<b>474</b>
	<b>2019</b>	76	88	94	99	98	<b>455</b>
	<b>2020</b>	57	95	89	100	86	<b>427</b>
<b>Projected</b>	<b>2021</b>	75	86	93	93	104	<b>451</b>
	<b>2022</b>	82	92	84	98	96	<b>452</b>
	<b>2023</b>	73	99	91	88	101	<b>452</b>
	<b>2024</b>	69	89	98	95	91	<b>441</b>
	<b>2025</b>	74	84	88	102	99	<b>447</b>
	<b>Extended</b>	<b>2026</b>	74	90	83	91	106
<b>2027</b>		74	90	89	87	95	<b>434</b>
<b>2028</b>		74	90	89	93	90	<b>436</b>
<b>2029</b>		74	90	89	93	96	<b>442</b>
<b>2030</b>		74	90	89	93	96	<b>442</b>

Alt 2.00

New Eagle Elementary Sch

24 students from new housing yields  
9 students at this elementary school

		K	1	2	3	4	TOTAL
<b>Historic</b>	<b>2015</b>	83	77	85	94	101	<b>440</b>
	<b>2016</b>	94	97	88	94	95	<b>468</b>
	<b>2017</b>	72	115	107	90	96	<b>480</b>
	<b>2018</b>	72	97	119	106	92	<b>486</b>
	<b>2019</b>	88	105	98	125	117	<b>533</b>
	<b>2020</b>	77	106	104	100	129	<b>516</b>
<b>Projected</b>	<b>2021</b>	77	99	112	108	105	<b>501</b>
	<b>2022</b>	90	99	104	117	112	<b>522</b>
	<b>2023</b>	80	115	105	107	121	<b>527</b>
	<b>2024</b>	75	102	120	108	111	<b>517</b>
	<b>2025</b>	81	96	107	125	112	<b>521</b>
	<b>Extended</b>	<b>2026</b>	81	103	101	111	129
<b>2027</b>		81	103	108	105	115	<b>512</b>
<b>2028</b>		81	103	108	112	108	<b>513</b>
<b>2029</b>		81	103	108	112	116	<b>521</b>
<b>2030</b>		81	103	108	112	116	<b>521</b>

		K	1	2	3	4	TOTAL
<b>Historic</b>	<b>2015</b>	83	77	85	94	101	<b>440</b>
	<b>2016</b>	94	97	88	94	95	<b>468</b>
	<b>2017</b>	72	115	107	90	96	<b>480</b>
	<b>2018</b>	72	97	119	106	92	<b>486</b>
	<b>2019</b>	88	105	98	125	117	<b>533</b>
	<b>2020</b>	77	106	104	100	129	<b>516</b>
<b>Projected</b>	<b>2021</b>	83	116	112	108	105	<b>524</b>
	<b>2022</b>	90	107	123	117	112	<b>548</b>
	<b>2023</b>	80	115	113	127	121	<b>555</b>
	<b>2024</b>	75	102	120	117	130	<b>545</b>
	<b>2025</b>	81	96	107	125	121	<b>530</b>
	<b>Extended</b>	<b>2026</b>	81	103	101	111	129
<b>2027</b>		81	103	108	105	115	<b>512</b>
<b>2028</b>		81	103	108	112	108	<b>513</b>
<b>2029</b>		81	103	108	112	116	<b>521</b>
<b>2030</b>		81	103	108	112	116	<b>521</b>

		K	1	2	3	4	TOTAL
<b>Historic</b>	<b>2015</b>	83	77	85	94	101	<b>440</b>
	<b>2016</b>	94	97	88	94	95	<b>468</b>
	<b>2017</b>	72	115	107	90	96	<b>480</b>
	<b>2018</b>	72	97	119	106	92	<b>486</b>
	<b>2019</b>	88	105	98	125	117	<b>533</b>
	<b>2020</b>	77	106	104	100	129	<b>516</b>
<b>Projected</b>	<b>2021</b>	85	118	114	109	105	<b>531</b>
	<b>2022</b>	92	111	126	119	113	<b>561</b>
	<b>2023</b>	82	119	119	131	123	<b>574</b>
	<b>2024</b>	77	106	127	123	135	<b>569</b>
	<b>2025</b>	83	100	113	132	128	<b>555</b>
	<b>Extended</b>	<b>2026</b>	83	107	106	117	137
<b>2027</b>		83	107	114	111	122	<b>536</b>
<b>2028</b>		83	107	114	119	115	<b>538</b>
<b>2029</b>		83	107	114	119	123	<b>546</b>
<b>2030</b>		83	107	114	119	123	<b>546</b>

Alt 2.00

Beaumont Elementary Sch

29 students from new housing yields  
11 students at this elementary school

		K	1	2	3	4	TOTAL
<b>Historic</b>	<b>2015</b>	59	76	79	96	91	<b>401</b>
	<b>2016</b>	57	79	88	82	98	<b>404</b>
	<b>2017</b>	60	65	85	94	88	<b>392</b>
	<b>2018</b>	68	97	98	105	107	<b>475</b>
	<b>2019</b>	99	92	110	106	106	<b>513</b>
	<b>2020</b>	57	88	92	106	101	<b>444</b>
<b>Projected</b>	<b>2021</b>	64	70	98	96	110	<b>437</b>
	<b>2022</b>	74	78	77	103	99	<b>432</b>
	<b>2023</b>	66	90	87	81	106	<b>429</b>
	<b>2024</b>	62	80	100	91	83	<b>416</b>
	<b>2025</b>	67	76	89	105	94	<b>431</b>
	<b>Extended</b>	<b>2026</b>	67	81	85	93	108
<b>2027</b>		67	81	91	88	96	<b>424</b>
<b>2028</b>		67	81	91	95	91	<b>425</b>
<b>2029</b>		67	81	91	95	98	<b>432</b>
<b>2030</b>		67	81	91	95	98	<b>432</b>

		K	1	2	3	4	TOTAL
<b>Historic</b>	<b>2015</b>	59	76	79	96	91	<b>401</b>
	<b>2016</b>	57	79	88	82	98	<b>404</b>
	<b>2017</b>	60	65	85	94	88	<b>392</b>
	<b>2018</b>	68	97	98	105	107	<b>475</b>
	<b>2019</b>	99	92	110	106	106	<b>513</b>
	<b>2020</b>	57	88	92	106	101	<b>444</b>
<b>Projected</b>	<b>2021</b>	69	84	98	96	110	<b>457</b>
	<b>2022</b>	74	84	94	103	99	<b>454</b>
	<b>2023</b>	66	90	93	98	106	<b>453</b>
	<b>2024</b>	62	80	100	98	100	<b>441</b>
	<b>2025</b>	67	76	89	105	101	<b>438</b>
	<b>Extended</b>	<b>2026</b>	67	81	85	93	108
<b>2027</b>		67	81	91	88	96	<b>424</b>
<b>2028</b>		67	81	91	95	91	<b>425</b>
<b>2029</b>		67	81	91	95	98	<b>432</b>
<b>2030</b>		67	81	91	95	98	<b>432</b>

		K	1	2	3	4	TOTAL
<b>Historic</b>	<b>2015</b>	59	76	79	96	91	<b>401</b>
	<b>2016</b>	57	79	88	82	98	<b>404</b>
	<b>2017</b>	60	65	85	94	88	<b>392</b>
	<b>2018</b>	68	97	98	105	107	<b>475</b>
	<b>2019</b>	99	92	110	106	106	<b>513</b>
	<b>2020</b>	57	88	92	106	101	<b>444</b>
<b>Projected</b>	<b>2021</b>	71	90	101	98	112	<b>472</b>
	<b>2022</b>	77	93	102	108	103	<b>484</b>
	<b>2023</b>	69	100	107	109	113	<b>497</b>
	<b>2024</b>	65	89	115	114	114	<b>496</b>
	<b>2025</b>	70	84	102	122	120	<b>498</b>
	<b>Extended</b>	<b>2026</b>	70	91	97	109	128
<b>2027</b>		70	91	104	103	114	<b>481</b>
<b>2028</b>		70	91	104	111	108	<b>483</b>
<b>2029</b>		70	91	104	111	116	<b>491</b>
<b>2030</b>		70	91	104	111	116	<b>491</b>



**Comparative Alternate Enrollments by Grade and Year**

**Alt 2.00** Standard CS Projection w/ Housing Overlay  
Tredyffrin-Easttown School District

Std 2.00 plus  
25 K + 75 Gr 1  
**Alt 2.02 V**

Accel Only 5 Yrs plus  
25 K + 75 Gr 1  
**Alt 2.12 V**

**Elementary K-Grade 4 Enrollments**

29 Students from approved housing to these grades  
41 Students from approved plus planned housing

		K	1	2	3	4	TOTAL
<b>Historic</b>	<b>2015</b>	356	496	462	529	582	<b>2,425</b>
	<b>2016</b>	399	462	525	500	546	<b>2,432</b>
	<b>2017</b>	380	483	481	544	513	<b>2,401</b>
	<b>2018</b>	389	520	513	512	568	<b>2,502</b>
	<b>2019</b>	420	506	540	539	539	<b>2,544</b>
	<b>2020</b>	316	482	506	543	516	<b>2,363</b>
<b>Projected</b>	<b>2021</b>	359	402	504	533	558	<b>2,355</b>
	<b>2022</b>	418	458	421	531	547	<b>2,374</b>
	<b>2023</b>	372	529	476	441	543	<b>2,361</b>
	<b>2024</b>	352	470	550	499	451	<b>2,322</b>
	<b>2025</b>	377	445	489	576	510	<b>2,397</b>
<b>Extended</b>	<b>2026</b>	377	477	463	513	589	<b>2,418</b>
	<b>2027</b>	377	477	496	485	524	<b>2,359</b>
	<b>2028</b>	377	477	496	520	496	<b>2,366</b>
	<b>2029</b>	377	477	496	520	532	<b>2,403</b>
	<b>2030</b>	377	477	496	520	532	<b>2,403</b>

		K	1	2	3	4	TOTAL
<b>Historic</b>	<b>2015</b>	356	496	462	529	582	<b>2,425</b>
	<b>2016</b>	399	462	525	500	546	<b>2,432</b>
	<b>2017</b>	380	483	481	544	513	<b>2,401</b>
	<b>2018</b>	389	520	513	512	568	<b>2,502</b>
	<b>2019</b>	420	506	540	539	539	<b>2,544</b>
	<b>2020</b>	316	482	506	543	516	<b>2,363</b>
<b>Projected</b>	<b>2021</b>	384	477	504	533	558	<b>2,455</b>
	<b>2022</b>	418	489	499	531	547	<b>2,484</b>
	<b>2023</b>	372	529	509	523	543	<b>2,475</b>
	<b>2024</b>	352	470	550	533	535	<b>2,440</b>
	<b>2025</b>	377	445	489	576	545	<b>2,432</b>
<b>Extended</b>	<b>2026</b>	377	477	463	513	589	<b>2,418</b>
	<b>2027</b>	377	477	496	485	524	<b>2,359</b>
	<b>2028</b>	377	477	496	520	496	<b>2,366</b>
	<b>2029</b>	377	477	496	520	532	<b>2,403</b>
	<b>2030</b>	377	477	496	520	532	<b>2,403</b>

		K	1	2	3	4	TOTAL
<b>Historic</b>	<b>2015</b>	356	496	462	529	582	<b>2,425</b>
	<b>2016</b>	399	462	525	500	546	<b>2,432</b>
	<b>2017</b>	380	483	481	544	513	<b>2,401</b>
	<b>2018</b>	389	520	513	512	568	<b>2,502</b>
	<b>2019</b>	420	506	540	539	539	<b>2,544</b>
	<b>2020</b>	316	482	506	543	516	<b>2,363</b>
<b>Projected</b>	<b>2021</b>	400	486	508	538	566	<b>2,499</b>
	<b>2022</b>	436	521	514	541	562	<b>2,573</b>
	<b>2023</b>	388	564	547	544	562	<b>2,606</b>
	<b>2024</b>	367	502	593	579	565	<b>2,606</b>
	<b>2025</b>	394	475	528	627	601	<b>2,625</b>
<b>Extended</b>	<b>2026</b>	394	510	499	558	652	<b>2,612</b>
	<b>2027</b>	394	510	535	528	580	<b>2,546</b>
	<b>2028</b>	394	510	535	566	548	<b>2,553</b>
	<b>2029</b>	394	510	535	567	588	<b>2,594</b>
	<b>2030</b>	394	510	535	567	588	<b>2,594</b>

Alt 2.00

**Devon Elementary School**

		K	1	2	3	4	TOTAL
<b>Historic</b>	<b>2015</b>	90	133	112	110	147	<b>592</b>
	<b>2016</b>	103	123	135	120	104	<b>585</b>
	<b>2017</b>	104	123	120	138	121	<b>606</b>
	<b>2018</b>	62	111	94	107	126	<b>500</b>
	<b>2019</b>	72	90	114	96	106	<b>478</b>
	<b>2020</b>	49	80	80	109	87	<b>405</b>
<b>Projected</b>	<b>2021</b>	76	62	78	81	104	<b>401</b>
	<b>2022</b>	88	96	60	79	77	<b>401</b>
	<b>2023</b>	79	112	94	61	75	<b>421</b>
	<b>2024</b>	75	100	109	96	58	<b>437</b>
	<b>2025</b>	80	95	98	111	91	<b>475</b>
<b>Extended</b>	<b>2026</b>	80	102	92	99	106	<b>480</b>
	<b>2027</b>	80	102	99	94	95	<b>470</b>
	<b>2028</b>	80	102	99	101	90	<b>472</b>
	<b>2029</b>	80	102	99	101	96	<b>479</b>
	<b>2030</b>	80	102	99	101	96	<b>479</b>

		K	1	2	3	4	TOTAL
<b>Historic</b>	<b>2015</b>	90	133	112	110	147	<b>592</b>
	<b>2016</b>	103	123	135	120	104	<b>585</b>
	<b>2017</b>	104	123	120	138	121	<b>606</b>
	<b>2018</b>	62	111	94	107	126	<b>500</b>
	<b>2019</b>	72	90	114	96	106	<b>478</b>
	<b>2020</b>	49	80	80	109	87	<b>405</b>
<b>Projected</b>	<b>2021</b>	82	80	78	81	104	<b>425</b>
	<b>2022</b>	88	104	77	79	77	<b>426</b>
	<b>2023</b>	79	112	101	78	75	<b>446</b>
	<b>2024</b>	75	100	109	103	74	<b>461</b>
	<b>2025</b>	80	95	98	111	98	<b>482</b>
<b>Extended</b>	<b>2026</b>	80	102	92	99	106	<b>480</b>
	<b>2027</b>	80	102	99	94	95	<b>470</b>
	<b>2028</b>	80	102	99	101	90	<b>472</b>
	<b>2029</b>	80	102	99	101	96	<b>479</b>
	<b>2030</b>	80	102	99	101	96	<b>479</b>

		K	1	2	3	4	TOTAL
<b>Historic</b>	<b>2015</b>	90	133	112	110	147	<b>592</b>
	<b>2016</b>	103	123	135	120	104	<b>585</b>
	<b>2017</b>	104	123	120	138	121	<b>606</b>
	<b>2018</b>	62	111	94	107	126	<b>500</b>
	<b>2019</b>	72	90	114	96	106	<b>478</b>
	<b>2020</b>	49	80	80	109	87	<b>405</b>
<b>Projected</b>	<b>2021</b>	89	83	79	82	106	<b>440</b>
	<b>2022</b>	96	116	82	82	79	<b>456</b>
	<b>2023</b>	86	125	116	85	79	<b>492</b>
	<b>2024</b>	81	112	125	120	82	<b>520</b>
	<b>2025</b>	87	106	112	129	116	<b>551</b>
<b>Extended</b>	<b>2026</b>	87	114	106	116	125	<b>548</b>
	<b>2027</b>	87	114	114	110	112	<b>537</b>
	<b>2028</b>	87	114	114	118	106	<b>539</b>
	<b>2029</b>	87	114	114	118	114	<b>547</b>
	<b>2030</b>	87	114	114	118	114	<b>547</b>

Alt 2.00

**Valley Forge Elementary School** 29 students from new housing yields  
11 students at this elementary school

		K	1	2	3	4	TOTAL
<b>Historic</b>	<b>2015</b>	65	114	113	127	139	<b>558</b>
	<b>2016</b>	69	85	116	123	141	<b>534</b>
	<b>2017</b>	73	89	91	123	125	<b>501</b>
	<b>2018</b>	103	114	101	104	145	<b>567</b>
	<b>2019</b>	85	131	124	113	112	<b>565</b>
	<b>2020</b>	76	113	141	128	113	<b>571</b>
<b>Projected</b>	<b>2021</b>	75	103	122	154	139	<b>593</b>
	<b>2022</b>	87	102	111	133	166	<b>600</b>
	<b>2023</b>	77	117	110	120	143	<b>567</b>
	<b>2024</b>	73	104	126	119	128	<b>550</b>
	<b>2025</b>	78	98	111	136	128	<b>552</b>
<b>Extended</b>	<b>2026</b>	78	105	105	121	147	<b>556</b>
	<b>2027</b>	78	105	113	114	130	<b>541</b>
	<b>2028</b>	78	105	113	123	123	<b>542</b>
	<b>2029</b>	78	105	113	123	132	<b>551</b>
	<b>2030</b>	78	105	113	123	132	<b>551</b>

		K	1	2	3	4	TOTAL
<b>Historic</b>	<b>2015</b>	65	114	113	127	139	<b>558</b>
	<b>2016</b>	69	85	116	123	141	<b>534</b>
	<b>2017</b>	73	89	91	123	125	<b>501</b>
	<b>2018</b>	103	114	101	104	145	<b>567</b>
	<b>2019</b>	85	131	124	113	112	<b>565</b>
	<b>2020</b>	76	113	141	128	113	<b>571</b>
<b>Projected</b>	<b>2021</b>	81	120	122	154	139	<b>616</b>
	<b>2022</b>	87	110	130	133	166	<b>626</b>
	<b>2023</b>	77	117	118	140	143	<b>595</b>
	<b>2024</b>	73	104	126	128	150	<b>580</b>
	<b>2025</b>	78	98	111	136	138	<b>562</b>
<b>Extended</b>	<b>2026</b>	78	105	105	121	147	<b>556</b>
	<b>2027</b>	78	105	113	114	130	<b>541</b>
	<b>2028</b>	78	105	113	123	123	<b>542</b>
	<b>2029</b>	78	105	113	123	132	<b>551</b>
	<b>2030</b>	78	105	113	123	132	<b>551</b>

		K	1	2	3	4	TOTAL
<b>Historic</b>	<b>2015</b>	65	114	113	127	139	<b>558</b>
	<b>2016</b>	69	85	116	123	141	<b>534</b>
	<b>2017</b>	73	89	91	123	125	<b>501</b>
	<b>2018</b>	103	114	101	104	145	<b>567</b>
	<b>2019</b>	85	131	124	113	112	<b>565</b>
	<b>2020</b>	76					