

5. Bus traffic on and around school property

		Response Total	Response Percent
Extremely important		98	39%
Moderately important		81	32%
Neutral		50	20%
Slightly important		9	4%
Not important		12	5%
Total Respondents		250	
(skipped this question)		6	

6. Non-bus traffic on and around school property

		Response Total	Response Percent
Extremely important		175	69%
Moderately important		59	23%
Neutral		14	6%
Slightly important		1	0%
Not important		5	2%
Total Respondents		254	
(skipped this question)		2	

7. Pedestrian traffic on and around school property

		Response Total	Response Percent
Extremely important		146	58%
Moderately important		62	25%
Neutral		33	13%
Slightly important		3	1%
Not important		9	4%
Total Respondents		253	
(skipped this question)		3	

8. Crossing guards

		Response Total	Response Percent
Extremely important		79	32%
Moderately important		79	32%
Neutral		61	25%
Slightly important		9	4%
Not important		20	8%
Total Respondents		248	
(skipped this question)		8	

9. Law enforcement traffic control

		Response Total	Response Percent
Extremely important		74	29%
Moderately important		75	30%
Neutral		67	27%
Slightly important		9	4%
Not important		27	11%
Total Respondents		252	
(skipped this question)		4	

10. Please expand on any of the topics above or enter additional traffic study comments regarding the school you selected for the survey.

Total Respondents	117
(skipped this question)	139

[Back](#)

Tredyffrin/Easttown School District Traffic Study Results Overview

Respondents: 143 displayed, 695 total

Status: Open

Launched Date: N/A

Closed Date: 11/19/2016

Display: Page 1 ▼

Active Report Filters:

Filter Type: Question;
QuestionID: 1536 AnswerID:
4383

Manage Filters: 1 filter

Share Results: Disabled

[More](#)

1. School:

	Response Total	Response Percent
Conestoga High School	0	0%
Tredyffrin/Easttown Middle School	143	100%
Valley Forge Middle School	0	0%
Valley Forge Elementary School	0	0%
Total Respondents	143	

2. Adequacy of school parking lots

	Response Total	Response Percent
Extremely important	56	39%
Moderately important	54	38%
Neutral	19	13%
Slightly important	4	3%
Not important	9	6%
Total Respondents	142	
(skipped this question)	1	

3. Driveway access

	Response Total	Response Percent
Extremely important	88	62%
Moderately important	35	24%
Neutral	14	10%
Slightly important	2	1%
Not important	4	3%
Total Respondents	143	

4. Arrival/dismissal times

	Response Total	Response Percent
Extremely important	74	52%
Moderately important	44	31%
Neutral	19	13%
Slightly important	1	1%
Not important	4	3%
Total Respondents	142	
(skipped this question)	1	

5. Bus traffic on and around school property

		Response Total	Response Percent
Extremely important		66	47%
Moderately important		43	30%
Neutral		24	17%
Slightly important		3	2%
Not important		5	4%
Total Respondents		141	
(skipped this question)		2	

6. Non-bus traffic on and around school property

		Response Total	Response Percent
Extremely important		92	65%
Moderately important		40	28%
Neutral		6	4%
Slightly important		2	1%
Not important		2	1%
Total Respondents		142	
(skipped this question)		1	

7. Pedestrian traffic on and around school property

		Response Total	Response Percent
Extremely important		78	55%
Moderately important		35	25%
Neutral		24	17%
Slightly important		1	1%
Not important		3	2%
Total Respondents		141	
(skipped this question)		2	

8. Crossing guards

		Response Total	Response Percent
Extremely important		84	60%
Moderately important		30	22%
Neutral		22	16%
Slightly important		2	1%
Not important		1	1%
Total Respondents		139	
(skipped this question)		4	

9. Law enforcement traffic control

		Response Total	Response Percent
Extremely important		46	33%
Moderately important		51	36%
Neutral		30	21%
Slightly important		4	3%
Not important		9	6%
Total Respondents		140	
(skipped this question)		3	

10. Please expand on any of the topics above or enter additional traffic study comments regarding the school you selected for the survey.

Total Respondents	78
(skipped this question)	65

[Back](#)

Tredyffrin/Easttown School District Traffic Study Results Overview

Respondents: 169 displayed, 695 total

Status: Open

Launched Date: N/A

Closed Date: 11/19/2016

Display: Page 1 ▼

Active Report Filters:

Filter Type: Question;
QuestionID: 1536 AnswerID:
4384

Manage Filters: 1 filter

Share Results: Disabled

[More](#)

1. School:

	Response Total	Response Percent
Conestoga High School	0	0%
Tredyffrin/Easttown Middle School	0	0%
Valley Forge Middle School	169	100%
Valley Forge Elementary School	0	0%
Total Respondents	169	

2. Adequacy of school parking lots

	Response Total	Response Percent
Extremely important	44	27%
Moderately important	68	41%
Neutral	42	25%
Slightly important	6	4%
Not important	6	4%
Total Respondents	166	
(skipped this question)	3	

3. Driveway access

	Response Total	Response Percent
Extremely important	119	71%
Moderately important	37	22%
Neutral	7	4%
Slightly important	2	1%
Not important	2	1%
Total Respondents	167	
(skipped this question)	2	

4. Arrival/dismissal times

	Response Total	Response Percent
Extremely important	79	48%
Moderately important	54	33%
Neutral	22	13%
Slightly important	2	1%
Not important	8	5%
Total Respondents	165	

(skipped this question) 4

5. Bus traffic on and around school property

		Response Total	Response Percent
Extremely important		73	44%
Moderately important		62	37%
Neutral		25	15%
Slightly important		2	1%
Not important		4	2%
Total Respondents		166	
(skipped this question)		3	

6. Non-bus traffic on and around school property

		Response Total	Response Percent
Extremely important		121	72%
Moderately important		33	20%
Neutral		12	7%
Slightly important		0	0%
Not important		2	1%
Total Respondents		168	
(skipped this question)		1	

7. Pedestrian traffic on and around school property

		Response Total	Response Percent
Extremely important		81	49%
Moderately important		39	24%
Neutral		33	20%
Slightly important		4	2%
Not important		8	5%
Total Respondents		165	
(skipped this question)		4	

8. Crossing guards

		Response Total	Response Percent
Extremely important		102	61%
Moderately important		38	23%
Neutral		24	14%
Slightly important		2	1%
Not important		1	1%
Total Respondents		167	
(skipped this question)		2	

9. Law enforcement traffic control

		Response Total	Response Percent
Extremely important		44	26%
Moderately important		60	36%
Neutral		48	29%
Slightly important		7	4%
Not important		9	5%
Total Respondents		168	
(skipped this question)		1	

10. Please expand on any of the topics above or enter additional traffic study comments regarding the school you selected for the survey.

Total Respondents 109
(skipped this question) 60

[Back](#)

Tredyffrin/Easttown School District Traffic Study Results Overview

Respondents: 127 displayed, 695 total

Status: Open

Launched Date: N/A

Closed Date: 11/19/2016

Display: Page 1 ▼

Active Report Filters:

Filter Type: Question;
QuestionID: 1536 AnswerID:
4385

Manage Filters: 1 filter

Share Results: Disabled

[More](#)

1. School:

	Response Total	Response Percent
Conestoga High School	0	0%
Tredyffrin/Easttown Middle School	0	0%
Valley Forge Middle School	0	0%
Valley Forge Elementary School	127	100%
Total Respondents	127	

2. Adequacy of school parking lots

	Response Total	Response Percent
Extremely important	27	22%
Moderately important	57	46%
Neutral	25	20%
Slightly important	11	9%
Not important	5	4%
Total Respondents	125	
(skipped this question)	2	

3. Driveway access

	Response Total	Response Percent
Extremely important	66	53%
Moderately important	36	29%
Neutral	15	12%
Slightly important	7	6%
Not important	1	1%
Total Respondents	125	
(skipped this question)	2	

4. Arrival/dismissal times

	Response Total	Response Percent
Extremely important	56	44%
Moderately important	37	29%
Neutral	29	23%
Slightly important	4	3%
Not important	1	1%
Total Respondents	127	

5. Bus traffic on and around school property

		Response Total	Response Percent
Extremely important		42	34%
Moderately important		41	33%
Neutral		34	27%
Slightly important		5	4%
Not important		2	2%
Total Respondents		124	
(skipped this question)		3	

6. Non-bus traffic on and around school property

		Response Total	Response Percent
Extremely important		50	40%
Moderately important		52	41%
Neutral		22	17%
Slightly important		2	2%
Not important		0	0%
Total Respondents		126	
(skipped this question)		1	

7. Pedestrian traffic on and around school property

		Response Total	Response Percent
Extremely important		47	37%
Moderately important		37	29%
Neutral		30	24%
Slightly important		5	4%
Not important		8	6%
Total Respondents		127	

8. Crossing guards

		Response Total	Response Percent
Extremely important		62	49%
Moderately important		37	29%
Neutral		16	13%
Slightly important		5	4%
Not important		6	5%
Total Respondents		126	
(skipped this question)		1	

9. Law enforcement traffic control

		Response Total	Response Percent
Extremely important		33	26%
Moderately important		38	30%
Neutral		31	24%
Slightly important		8	6%
Not important		17	13%
Total Respondents		127	

10. Please expand on any of the topics above or enter additional traffic study comments regarding the school you selected for the survey.

Total Respondents	57
(skipped this question)	70



www.TrafficPD.com



T/E School District

SCHOOL ACCESS AND INTERNAL CIRCULATION ASSESSMENT

April 18, 2017

Presented By: Greg Richardson, P.E.

LOCATIONS

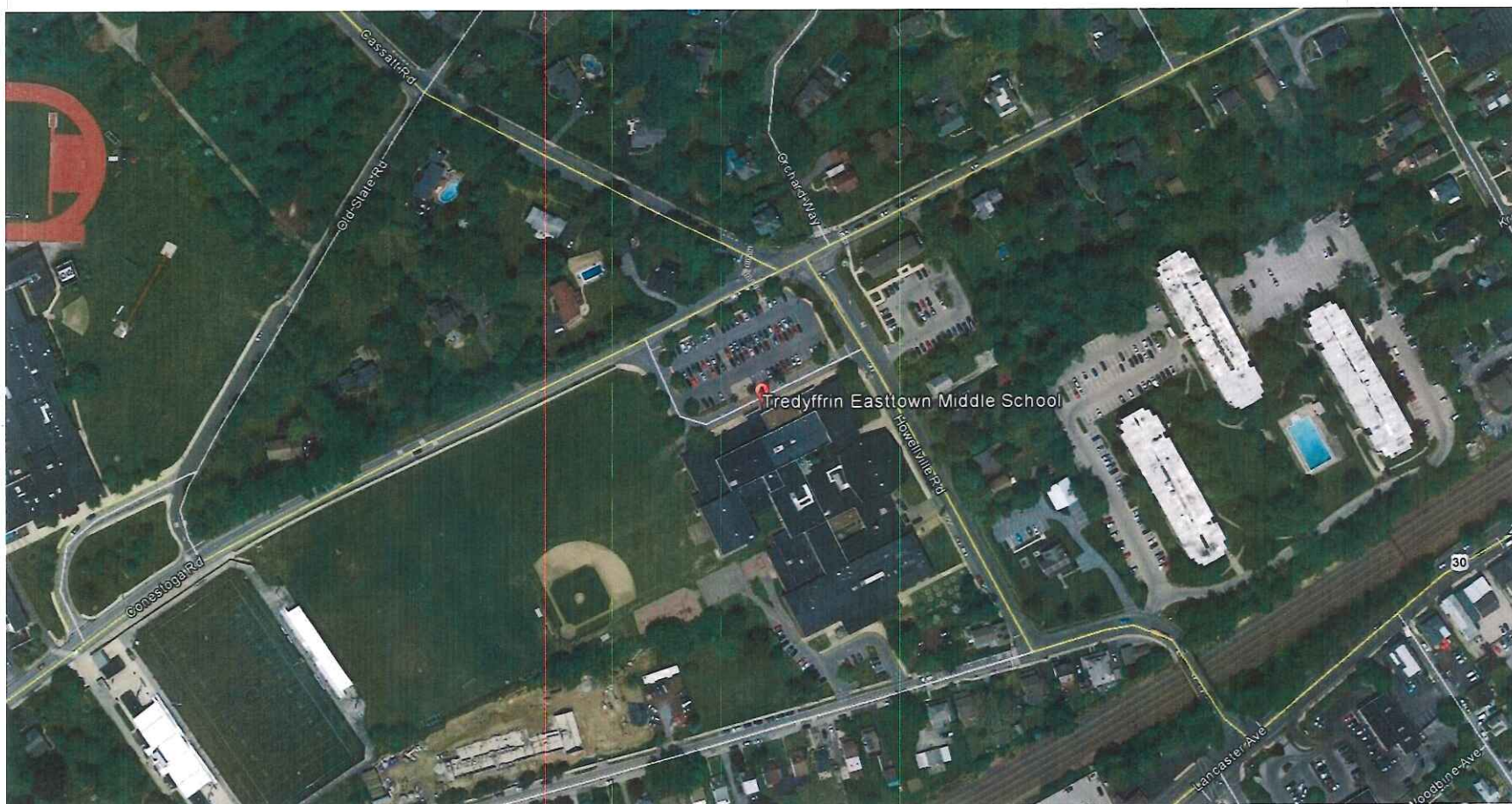
Allentown | Camden | Doylestown | Harrisburg | Philadelphia | Pittsburgh | Pottstown | West Chester

- To Conduct an Access and Internal Circulation Assessment
- Determine Short-Term/Long-Term Enhancements to Facilitate Traffic Flow
- Obtain Community Input

Conestoga High School



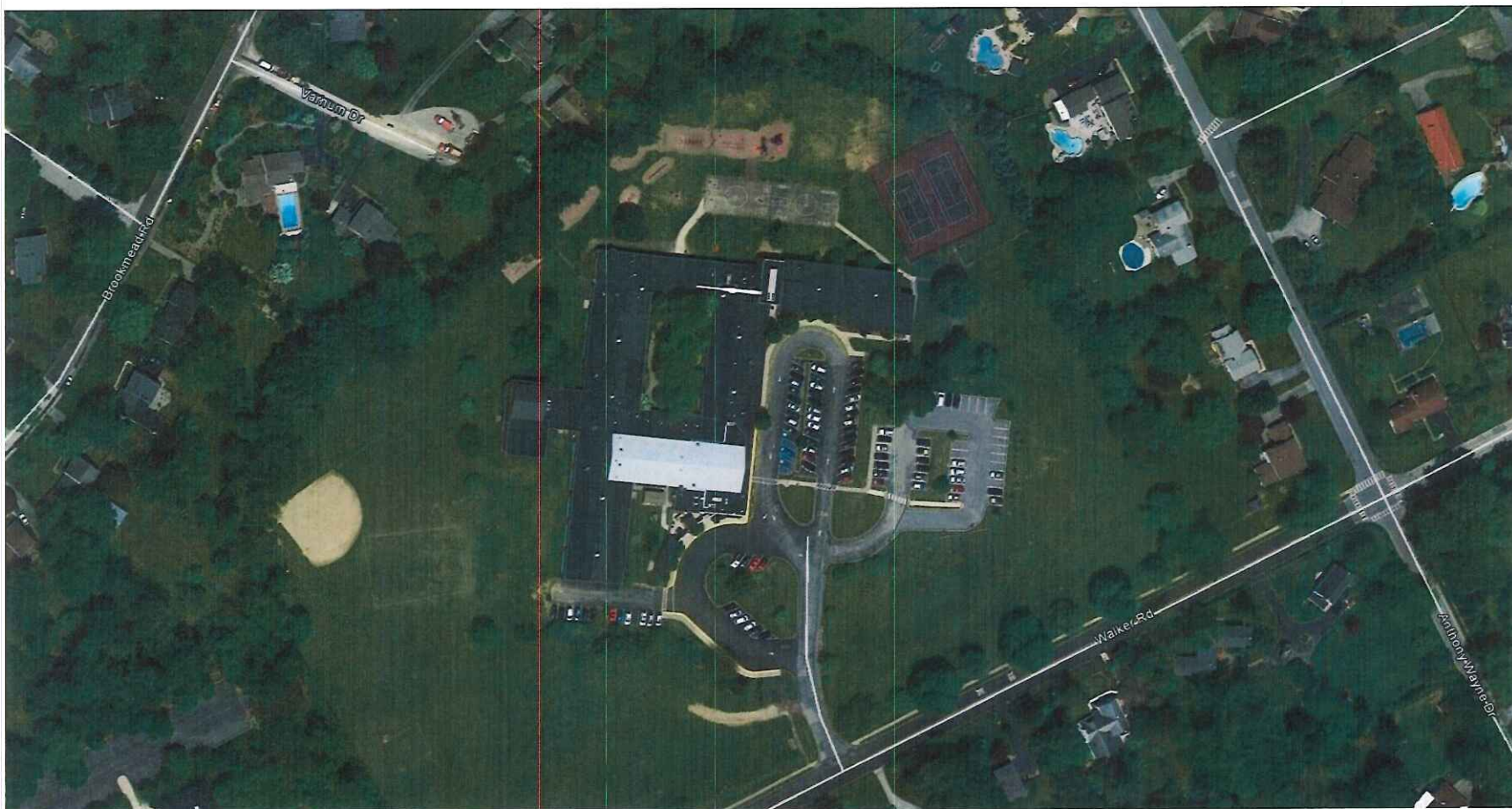
T/E Middle School



Valley Forge Middle School



Valley Forge Elementary School



➤ **Conestoga High School**

- Wednesday, February 22, 2017
 - ❖ 6:30 A.M. – 8:00 A.M.
 - ❖ 1:30 P.M. – 5:30 P.M.

➤ **T/E Middle School**

- Tuesday, March 7, 2017
 - ❖ 6:30 A.M. – 8:00 A.M.
 - ❖ 1:30 P.M. – 5:30 P.M.

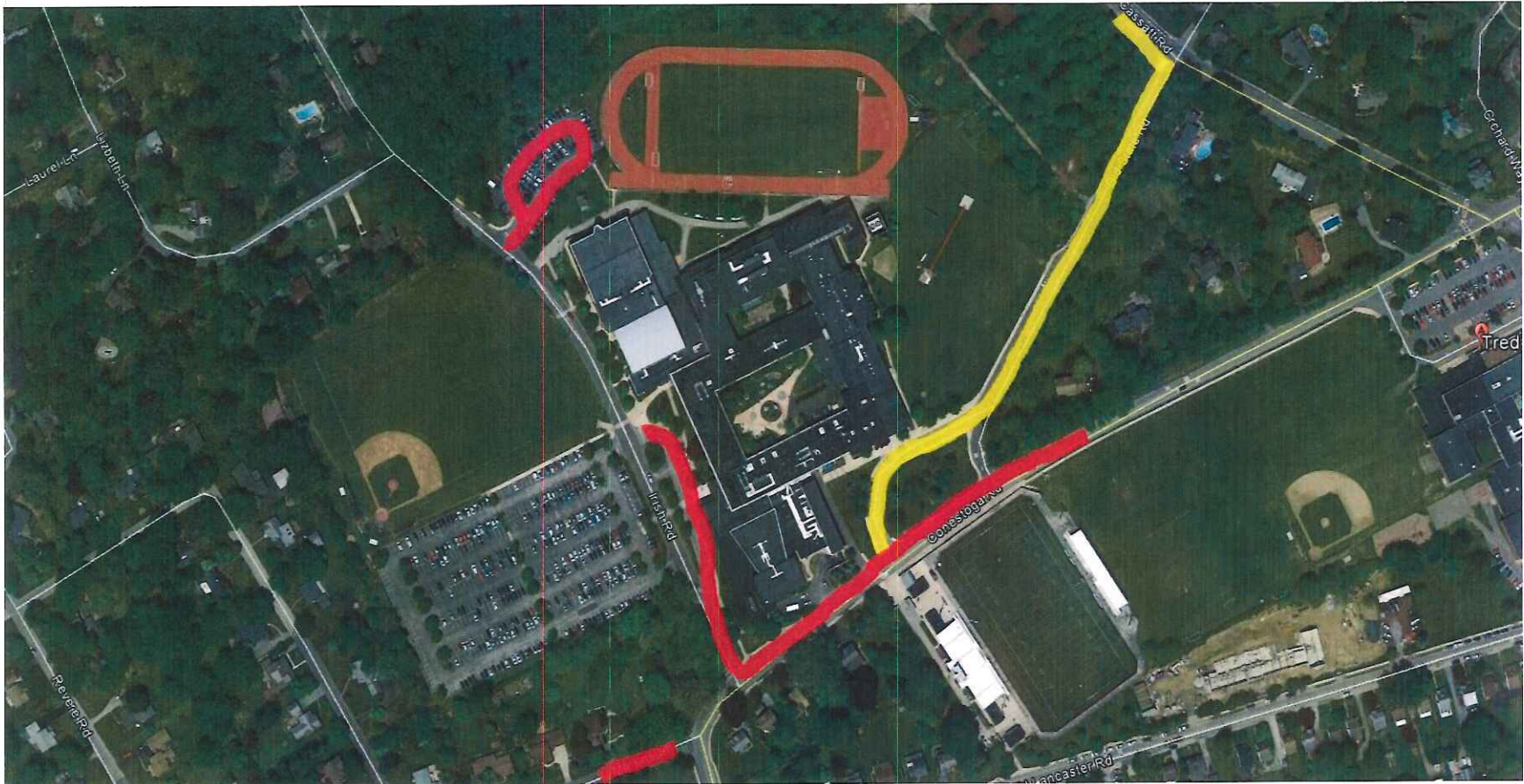
➤ **Valley Forge Middle School**

- Thursday, January 12, 2017
 - ❖ 6:00 A.M. – 6:00 P.M.

➤ **Valley Forge Elementary School**

- Tuesday, April 4, 2017
 - ❖ 7:30 A.M. – 9:30 A.M.
 - ❖ 2:30 P.M. – 4:30 P.M.

Conestoga High School – Vehicle Routes



Buses

Passenger Vehicles

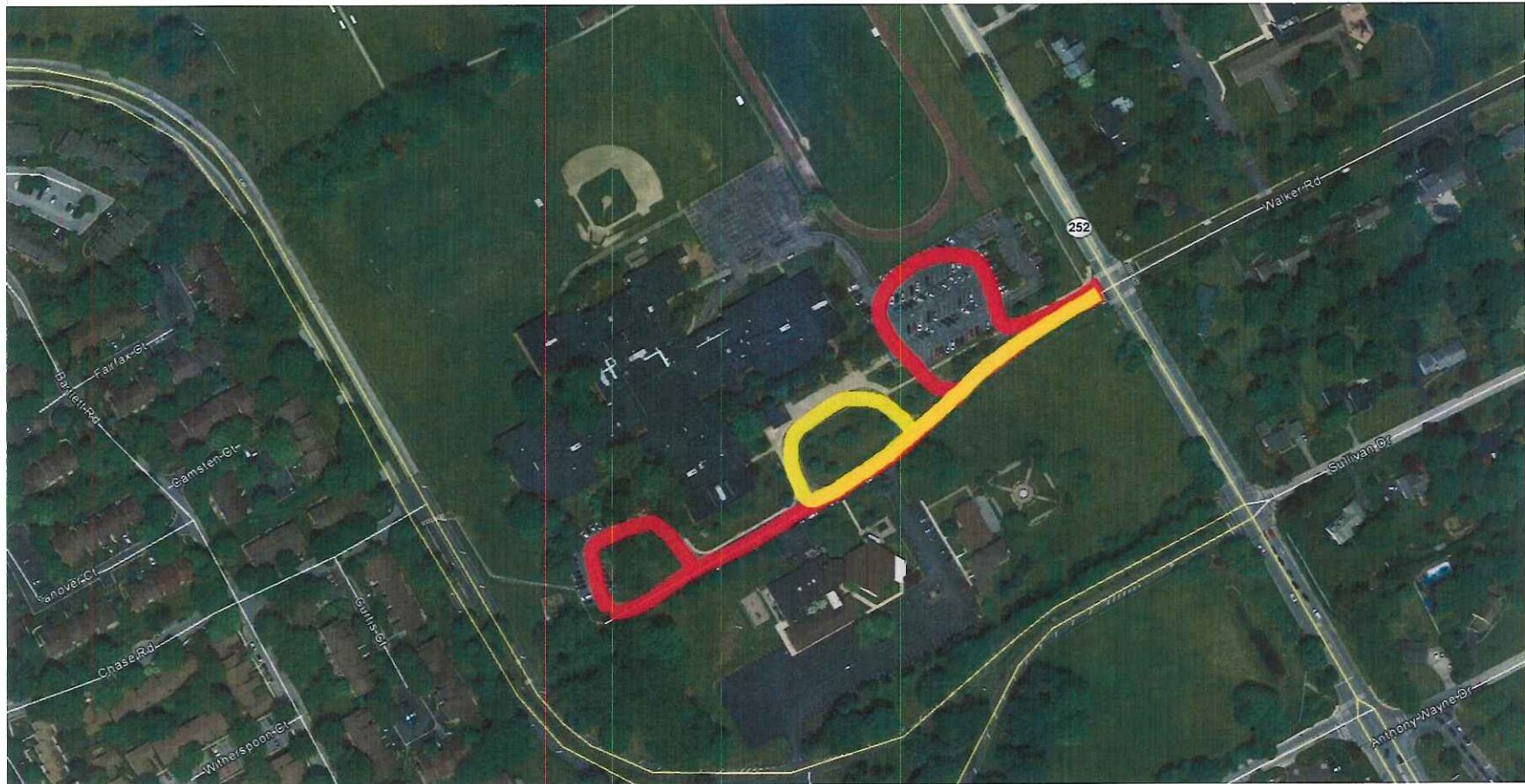
T/E Middle School – Vehicle Routes



Buses

Passenger Vehicles

Valley Forge Middle School – Vehicle Routes

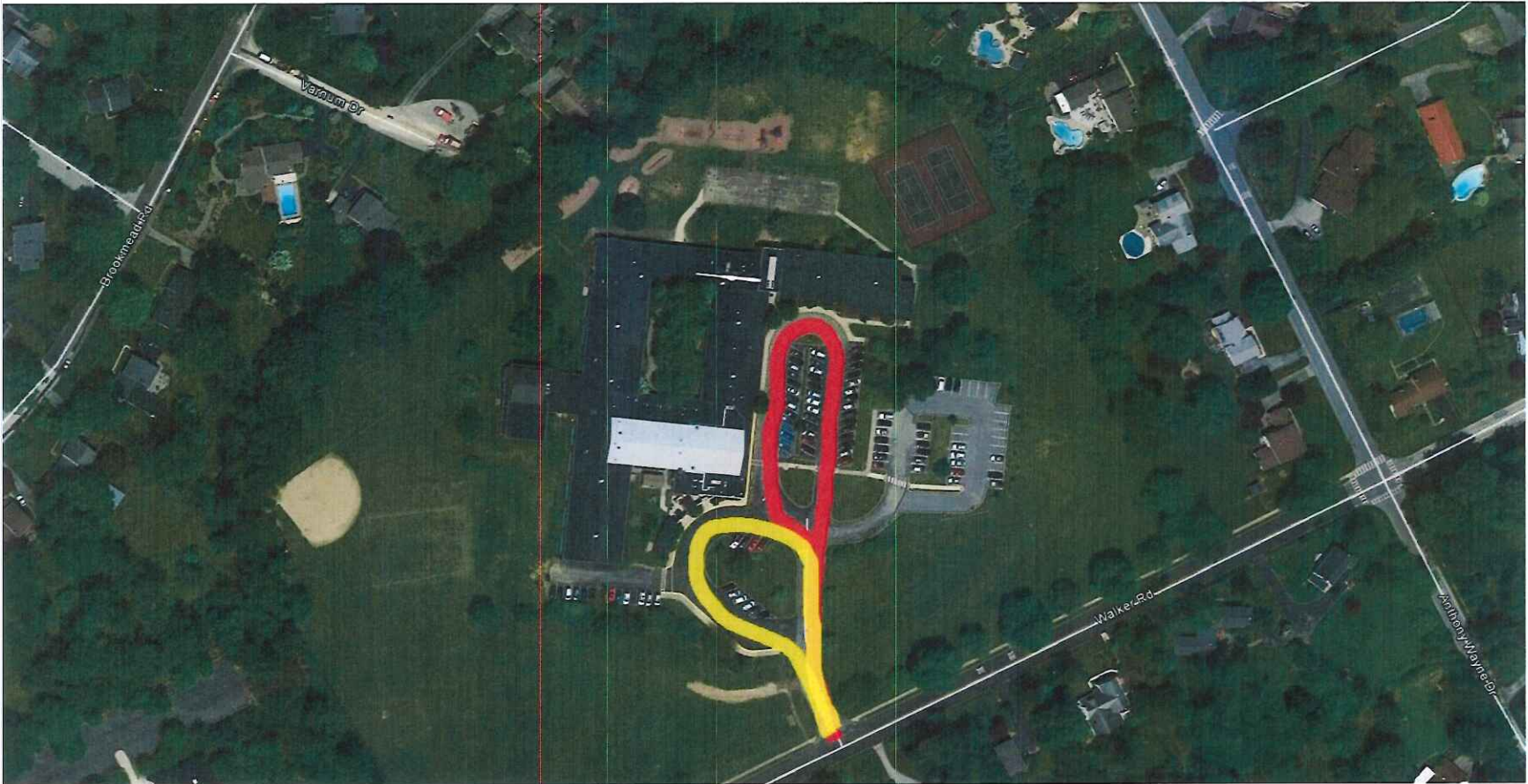


Buses



Passenger Vehicles

Valley Forge Elementary School – Vehicle Routes



Buses

Passenger Vehicles

T/E School District Online Survey - Topics

- Adequacy of Parking Lots
- Driveway Access
- Arrival/Dismissal Times
- Bus Traffic
- Non-Bus Traffic
- Pedestrians
- Crossing Guards
- Traffic Control and Enforcement

T/E School District Online Survey



School	Responses
Conestoga High School	256
T/E Middle School	143
Valley Forge Middle School	169
Valley Forge Elementary School	127
Total:	695