

LEA Name : Tredyffrin-Easttown SD
Address : West Valley Business Center
Wayne , PA 19087

County : Chester
AUN Number : 124157802
LEA Type : SD

Annual Financial Report Accuracy Certification Statement

For Fiscal Year Ending
6/30/2023

Pennsylvania Department of Education
&
Office of Comptroller Operations

PDE-2056: Intermediate Unit
PDE-2057: School District, AVTS/CTC, Charter School,
and Special Program Jointure

CERTIFICATION: By signing this page I agree that the electronic data submitted is a complete and accurate statement of the financial operations and status of the local education agency for the fiscal year. It has been prepared in accordance with generally accepted accounting principles and established Commonwealth of PA reporting guidelines.

Chief School Administrator Signature

Date

Board Secretary Signature

Date

Richard D Livergood

Contact Person

livergoodr@tesd.net

Contact Person E-mail Address

(484)744-9254

Ext :

Contact Person Telephone Number

Contact Person Fax Number

Audit Certification
Annual Financial Report:
For Fiscal Year Ending **6/30/2023**
(Pursuant to PA School Code Section 218(b))

LEA Name : Tredyffrin-Easttown SD
AUN Number : 124157802
County : Chester

Audit Certification Due: 12/31/2023

This certification is applicable to the Annual Financial Report data submitted through the Consolidated Financial Reporting System (CFRS).

CERTIFICATION: By signing this page I agree that the financial statements of the school have been properly audited as noted above pursuant to Article XXIV, and in the auditor's professional opinion, the Annual Financial Report (PDE-2057) submitted through CFRS is materially consistent with the audited financial statements.

Chief School Administrator

Board Secretary

Signature

Date

Signature

Date

Richard D Livergood

Contact Person

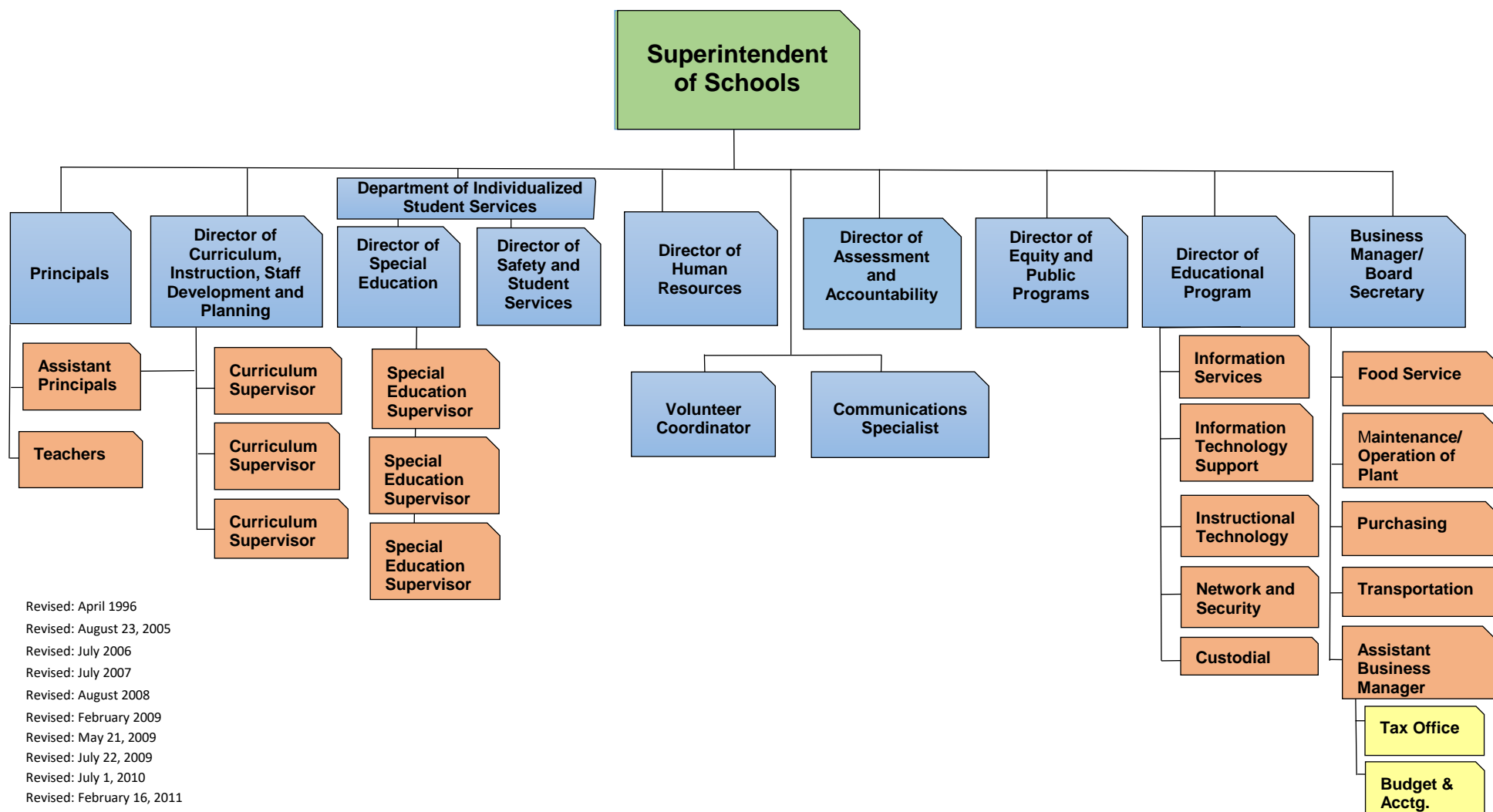
livergoodr@tesd.net

Contact Person E-mail Address

(484)744-9254 Ext :

Contact Person Telephone Number

Contact Person Fax Number



Revised: April 1996
 Revised: August 23, 2005
 Revised: July 2006
 Revised: July 2007
 Revised: August 2008
 Revised: February 2009
 Revised: May 21, 2009
 Revised: July 22, 2009
 Revised: July 1, 2010
 Revised: February 16, 2011
 Revised: December 9, 2011
 Revised: May 30, 2012
 Revised: May 20, 2013
 Revised: November 12, 2015
 Revised: July 1, 2017
 Revised: July 2019
 Revised: September 3, 2019
 Revised: August 31, 2021
 Revised: July 11, 2023
 Revised: September 5, 2023

Capital Assets

Capital Asset Additions

Purchased capital assets greater than \$5,000 should be recorded at historical/original cost. The cost of a capital asset should include capitalized interest and ancillary charges necessary to place the asset into its intended location and condition for use. Ancillary charges include costs that are directly attributable to asset acquisition – such as freight and transportation charges, site preparations cost, and professional fees.

Purchases less than \$5,000 that are consumed within the fiscal year are treated as supplies and coded to the supply objects prescribed by the Pennsylvania Public School Accounting Manual.

Capital assets should be depreciated over their estimated useful lives as determined for each asset class. Land, and some land improvements are considered inexhaustible, and are therefore not subject to depreciation.

If determining historical cost is not practical due to inadequate records, reporting should be based on estimates of the original cost at the date of construction or purchase.

Capital assets records must include the acquisition date, cost, estimated useful life and method of depreciation for each capital asset classification and group.

Due to change in technology, computer software is considered a supply and is expensed at the time of purchase.

Donated capital assets must be reported as fair market value plus ancillary charges, if any, at the time of donation. Donated assets are recorded as contributed capital and depreciated over their estimated useful lives, as determined for each asset class. If determining historical costs is not practical due to inadequate records, reporting should be based on estimates of fair market value at the date of donation.

Infrastructure assets are long-lived capital assets that normally are stationary in nature and can normally be preserved for a significantly greater number of years than most capital assets. Infrastructure includes parking lots and sidewalks. Infrastructure assets should be depreciated over their estimated useful lives.

Infrastructure asset routine repairs and maintenance cost are charged to operations as incurred. Expenditures that extend the estimated useful life of the infrastructure are capitalized as part of the asset and depreciated over the newly established estimated useful life.

Works of art, historical treasures and similar assets should be capitalized at their historical cost or fair value at date of donation (estimated if necessary) whether they are held as individual items or in a collection. Capitalized collections or individual items that are exhaustible should be depreciated over their estimated useful lives. Depreciation is not required for collections or individual items that are inexhaustible.

Capital Asset Disposal

When capital assets are sold, a calculation of gain or loss on disposal is required. The calculation is based upon the amount of proceeds received less the net book value (cost of the capital asset less accumulated depreciation taken).

When capital assets are traded-in, the value of the trade is part of the cost of the newly acquired asset. The costs and accumulated depreciation of the trade-in asset must be removed from the capital asset accounts. Any gain or loss resulting from the disposition of the asset will be recognized as a gain or loss on disposal in the entity-wide operating statement.

Asset Acquired by Capital Lease

Assets acquired by capital lease are recorded at the net present value of the future minimum lease payments. A corresponding liability is established at this time. Assets acquired under the terms of capital leases are depreciated using the straight-line method over the estimated useful lives designated for the asset class.

Repairs and Maintenance

Extraordinary repairs greater than \$5,000 extending the estimated useful life of an asset beyond one (1) year should be capitalized, and the estimated useful life of the entire asset for depreciation purposes should be revised. Routine repairs, maintenance and parts purchased to keep the asset in working condition are charged to expense as incurred whether they are greater than or equal to \$5,000

Depreciation Useful Life Table:

Capital Assets are to be depreciated per the following Depreciation Useful Life Table:

Asset Class	Years	Examples
Outdoor Equipment & Signs	20	Stationary Playground/Athletic Equipment & Fixtures
Machinery & Tools	10	Pottery, Kitchen & Health Room Equipment
Furniture, Equipment & Accessories	5-10	Custodial Equipment/Vacuums, Science/Engineering Equipment, Whiteboards
Business Machines	5	Copiers, Postage Machines
Communication Systems	5	Telephones, Cellphones, Telephonic Operational Systems, Intercoms
Technology, Information Systems and Network Hardware	3-5	Computers, Printers, Scanners, iPads, Other handheld computer devices, Servers, Routers, Switches
Audiovisual Equipment & Accessories	7	Televisions, Cameras, Camcorders, Projectors, Smart Boards
Licensed Vehicles	8	Automobiles, Trucks
Contractor Equipment	10	Front-End Loaders, Large Tractors
Ground & Maintenance Equipment	7	Ground & Maintenance Equipment, Mowers, Small Tractors
School Buildings	40	School Buildings
Land/Site Improvements	20	Sidewalks, Walk-Ways, Parking Lots, Athletic Fields, Grading
Portable Structures	20	Portable Gymnasium Stands, Modular Classrooms
Interior/Exterior Construction	20	Completed Construction
Electrical/Plumbing	20	Electrical/Plumbing Installations
HVAC Systems	20	HVAC Installations
Sprinkler/Fire/Alarm Systems	20	Sprinkler/Fire/Alarm Installations
Roofing	20	Roofing
Stage & Auditorium	20	Stage & Auditorium/Stage Curtain
Carpeting & Vinyl Flooring (New/Replacement)	5	Carpeting & Flooring Installations
Classroom Desks	10	Classroom Desks
Classroom Chairs	10	Classroom Chairs
Multi-Media Materials	5	Multi-Media Materials
Athletic Equipment (Portable)	7	Gym/Football Equipment, Weight Machines
Uniforms	5	Athletic, Musical Uniforms
Musical Instruments	10	Piano, Wind, Brass, Percussion Instruments
Land	N/A	Land Acquisition

<u>Val Number</u>	<u>Description</u>	<u>Justification</u>
50117	<p>SOIN: Reductions/Retirements have been reported for Governmental Fund Leases and Other Right-to-Use Arrangements. However, comparable entries have not been reported in Governmental Fund Expenditure Function 5140, Object 910. Please correct or provide a justification.</p> <p>SOIN: Govt Funds Lease and Other Right to Use Arrangements Retirements/Repayments: \$713,821.00 Govt Funds Expenditure Detail: Function 5140, Object 910: \$0.00</p>	<p>Expenditure is in the Capital Fund #39 not General Fund #10</p>

LEA : 124157802 Tredyffrin-Easttown SD

Printed 11/28/2023 1:34:59 PM

Amounts Expressed in Whole Dollars		<u>General Fund</u> <u>(10)</u>	<u>Student Sponsored</u> <u>Activity Fund</u> <u>(21)</u>	<u>Public Purpose Trust</u> <u>(27)</u>	<u>Other Compt Approved</u> <u>(28)</u>	<u>Athletic / Activity</u> <u>(29)</u>
Assets And Deferred Outflows Of Resources						
Assets						
0100	Cash and Cash Equivalents	14,030,326				
0110	Investments	44,245,085				
0120	Taxes Receivable	1,914,877				
0130	Due From Other Funds	123,855				
0141	Due From Other Governments	6,633,243				
0142	State Revenue Receivable					
0143	Federal Revenue Receivable					
0145	Other Intergovernmental Revenue Receivable					
0146	Due from Primary Government					
0147	Due from Component Unit					
0150	Other Receivables	69,557				
0170	Inventories					
0180	Prepaid Expenses (Expenditures)	5,185				
0190	Other Current Assets					
Total Assets		\$67,022,128				
0910	Deferred Outflows of Resources					
Total Assets And Deferred Outflows Of Resources		\$67,022,128				

LEA : 124157802 Tredyffrin-Easttown SD

Amounts Expressed in Whole Dollars		<u>Capital Reserve (690.1850)</u> <u>(31)</u>	<u>Capital Reserve (1431)</u> <u>(32)</u>	<u>Other Capital Projects</u> <u>Fund</u> <u>(39)</u>	<u>Debt Service</u> <u>(40)</u>	<u>Permanent</u> <u>(90)</u>
Assets And Deferred Outflows Of Resources						
Assets						
0100	Cash and Cash Equivalents		7,358,305	9,385,543		
0110	Investments		3,006,811			
0120	Taxes Receivable					
0130	Due From Other Funds		5,000,000			
0141	Due From Other Governments					
0142	State Revenue Receivable					
0143	Federal Revenue Receivable					
0145	Other Intergovernmental Revenue Receivable					
0146	Due from Primary Government					
0147	Due from Component Unit					
0150	Other Receivables					
0170	Inventories					
0180	Prepaid Expenses (Expenditures)					
0190	Other Current Assets					
Total Assets			\$15,365,116	\$9,385,543		
0910	Deferred Outflows of Resources					
Total Assets And Deferred Outflows Of Resources			\$15,365,116	\$9,385,543		

LEA : 124157802 Tredyffrin-Easttown SD

Printed 11/28/2023 1:34:59 PM

Amounts Expressed in Whole Dollars		<u>Total Governmental</u>
		<u>Funds</u>
Assets And Deferred Outflows Of Resources		
Assets		
0100	Cash and Cash Equivalents	30,774,174
0110	Investments	47,251,896
0120	Taxes Receivable	1,914,877
0130	Due From Other Funds	5,123,855
0141	Due From Other Governments	6,633,243
0142	State Revenue Receivable	
0143	Federal Revenue Receivable	
0145	Other Intergovernmental Revenue Receivable	
0146	Due from Primary Government	
0147	Due from Component Unit	
0150	Other Receivables	69,557
0170	Inventories	
0180	Prepaid Expenses (Expenditures)	5,185
0190	Other Current Assets	
Total Assets		\$91,772,787
0910	Deferred Outflows of Resources	
Total Assets And Deferred Outflows Of Resources		\$91,772,787

LEA : 124157802 Tredyffrin-Easttown SD

Printed 11/28/2023 1:34:59 PM

Amounts Expressed in Whole Dollars	<u>General Fund</u> <u>(10)</u>	<u>Student Sponsored</u> <u>Activity Fund</u> <u>(21)</u>	<u>Public Purpose Trust</u> <u>(27)</u>	<u>Other Compt Approved</u> <u>(28)</u>	<u>Athletic / Activity</u> <u>(29)</u>
Liabilities And Deferred Inflows Of Resources And Fund Balances					
Liabilities					
0400 Due to Other Funds	5,000,000				
0411 Due to Other Governments					
0412 Due to Primary Government					
0413 Due to Component Unit					
0420 Accounts Payable	3,934,138				
0430 Contracts Payable					
0440 Current Portion of Long-Term Debt					
0450 Short-Term Payables					
0461 Accrued Salaries and Benefits	495,842				
0462 Payroll Deductions and Withholding	22,853,986				
0480 Unearned Revenues					
0490 Other Current Liabilities					
Total Liabilities	\$32,283,966				
0950 Deferred Inflows of Resources	1,639,030				
Fund Balances					
0810 Nonspendable Fund Balance	5,185				
0820 Restricted Fund Balance					
0830 Committed Fund Balance	32,854,963				
0840 Assigned Fund Balance	238,984				
0850 Unassigned Fund Balance					
Total Fund Balances	\$33,099,132				
Total Liabilities, Deferred Inflows Of Resources And Fund Balances	\$67,022,128				

LEA : 124157802 Tredyffrin-Easttown SD

Printed 11/28/2023 1:34:59 PM

Amounts Expressed in Whole Dollars		<u>Capital Reserve (690.</u> <u>1850)</u> <u>(31)</u>	<u>Capital Reserve (1431)</u> <u>(32)</u>	<u>Other Capital Projects</u> <u>Fund</u> <u>(39)</u>	<u>Debt Service</u> <u>(40)</u>	<u>Permanent</u> <u>(90)</u>
Liabilities And Deferred Inflows Of Resources And Fund Balances						
Liabilities						
0400	Due to Other Funds					
0411	Due to Other Governments					
0412	Due to Primary Government					
0413	Due to Component Unit					
0420	Accounts Payable			2,020,044		
0430	Contracts Payable					
0440	Current Portion of Long-Term Debt					
0450	Short-Term Payables					
0461	Accrued Salaries and Benefits					
0462	Payroll Deductions and Withholding					
0480	Unearned Revenues					
0490	Other Current Liabilities					
Total Liabilities				\$2,020,044		
0950	Deferred Inflows of Resources					
Fund Balances						
0810	Nonspendable Fund Balance					
0820	Restricted Fund Balance		15,365,116	7,365,499		
0830	Committed Fund Balance					
0840	Assigned Fund Balance					
0850	Unassigned Fund Balance					
Total Fund Balances			\$15,365,116	\$7,365,499		
Total Liabilities, Deferred Inflows Of Resources And Fund Balances			\$15,365,116	\$9,385,543		

LEA : 124157802 Tredyffrin-Easttown SD

Printed 11/28/2023 1:34:59 PM

Amounts Expressed in Whole Dollars		<u>Total Governmental</u> <u>Funds</u>
Liabilities And Deferred Inflows Of Resources And Fund Balances		
Liabilities		
0400 Due to Other Funds	5,000,000	
0411 Due to Other Governments		
0412 Due to Primary Government		
0413 Due to Component Unit		
0420 Accounts Payable	5,954,182	
0430 Contracts Payable		
0440 Current Portion of Long-Term Debt		
0450 Short-Term Payables		
0461 Accrued Salaries and Benefits	495,842	
0462 Payroll Deductions and Withholding	22,853,986	
0480 Unearned Revenues		
0490 Other Current Liabilities		
Total Liabilities	\$34,304,010	
0950 Deferred Inflows of Resources	1,639,030	
Fund Balances		
0810 Nonspendable Fund Balance	5,185	
0820 Restricted Fund Balance	22,730,615	
0830 Committed Fund Balance	32,854,963	
0840 Assigned Fund Balance	238,984	
0850 Unassigned Fund Balance		
Total Fund Balances	\$55,829,747	
Total Liabilities, Deferred Inflows Of Resources And Fund Balances	\$91,772,787	

Amounts Expressed in Whole Dollars	<u>General Fund</u> <u>(10)</u>	<u>Student Sponsored</u> <u>Activity Fund</u> <u>(21)</u>	<u>Public Purpose Trust</u> <u>(27)</u>	<u>Other Compt Approved</u> <u>(28)</u>	<u>Athletic / Activity</u> <u>(29)</u>
Revenues					
6000 Revenue from Local Sources	139,584,386				
7000 Revenue from State Sources	25,713,932				
8000 Revenue from Federal Sources	1,630,727				
Total Revenues	\$166,929,045				
Expenditures					
1000 Instruction	103,313,371				
2000 Support Services	48,535,556				
3000 Operation of Non-Instructional Services	2,163,739				
4000 Facilities Acquisition, Construction and Improvement Services					
5110 Debt Service	7,369,994				
5130 Refund of Prior Year Revenues / Receipts	2,042				
5140 Leases and Other Right-to-Use Arrangements					
Total Expenditures	\$161,384,702				
Excess (Deficiency) Of Revenues Over Expenditures	\$5,544,343				
Other Financing Sources (Uses)					
9110 Face Value of Bonds Issued					
9120 Proceeds from Refunding of Bonds					
9130 Bond Premiums					
9200 Proceeds from Extended Term Financing, Leases, and Other Right-to-Use Arrangements					
9300 Interfund Transfers - IN					
9400 Sale of or Compensation for Loss of Fixed Assets					
9710 Transfers from Component Units					
9720 Transfers from Primary Governments					
9910 Other Financing Sources Not Listed in the 9000 Series					
9990 Insurance Recoveries					
5120 Debt Service – Refunded Bonds					
5150 Bond Discounts					
5200 Interfund Transfers – Out	5,000,000				
5300 Transfers Out to Component Units/Primary Governments					
Total Other Financing Sources (Uses)	(\$5,000,000)				

LEA : 124157802 Tredyffrin-Easttown SD

Printed 11/28/2023 1:35:06 PM

Amounts Expressed in Whole Dollars		<u>Capital Reserve (690.1850)</u> <u>(31)</u>	<u>Capital Reserve (1431)</u> <u>(32)</u>	<u>Other Capital Projects</u> <u>Fund</u> <u>(39)</u>	<u>Debt Service</u> <u>(40)</u>	<u>Permanent</u> <u>(90)</u>
Revenues						
6000	Revenue from Local Sources		356,905	463,635		
7000	Revenue from State Sources					
8000	Revenue from Federal Sources					
Total Revenues			\$356,905	\$463,635		
Expenditures						
1000	Instruction					
2000	Support Services			479,294		
3000	Operation of Non-Instructional Services					
4000	Facilities Acquisition, Construction and Improvement Services			8,258,339		
5110	Debt Service					
5130	Refund of Prior Year Revenues / Receipts					
5140	Leases and Other Right-to-Use Arrangements					
Total Expenditures				\$8,737,633		
Excess (Deficiency) Of Revenues Over Expenditures			\$356,905	(\$8,273,998)		
Other Financing Sources (Uses)						
9110	Face Value of Bonds Issued					
9120	Proceeds from Refunding of Bonds					
9130	Bond Premiums					
9200	Proceeds from Extended Term Financing, Leases, and Other Right-to-Use Arrangements			839,496		
9300	Interfund Transfers - IN		5,000,000			
9400	Sale of or Compensation for Loss of Fixed Assets			22,691		
9710	Transfers from Component Units					
9720	Transfers from Primary Governments					
9910	Other Financing Sources Not Listed in the 9000 Series					
9990	Insurance Recoveries					
5120	Debt Service – Refunded Bonds					
5150	Bond Discounts					
5200	Interfund Transfers – Out					
5300	Transfers Out to Component Units/Primary Governments					
Total Other Financing Sources (Uses)			\$5,000,000	\$862,187		

Amounts Expressed in Whole Dollars		<u>Total Governmental Funds</u>
Revenues		
6000	Revenue from Local Sources	140,404,926
7000	Revenue from State Sources	25,713,932
8000	Revenue from Federal Sources	1,630,727
Total Revenues		\$167,749,585
Expenditures		
1000	Instruction	103,313,371
2000	Support Services	49,014,850
3000	Operation of Non-Instructional Services	2,163,739
4000	Facilities Acquisition, Construction and Improvement Services	8,258,339
5110	Debt Service	7,369,994
5130	Refund of Prior Year Revenues / Receipts	2,042
5140	Leases and Other Right-to-Use Arrangements	
Total Expenditures		\$170,122,335
Excess (Deficiency) Of Revenues Over Expenditures		(\$2,372,750)
Other Financing Sources (Uses)		
9110	Face Value of Bonds Issued	
9120	Proceeds from Refunding of Bonds	
9130	Bond Premiums	
9200	Proceeds from Extended Term Financing, Leases, and Other Right-to-Use Arrangements	839,496
9300	Interfund Transfers - IN	5,000,000
9400	Sale of or Compensation for Loss of Fixed Assets	22,691
9710	Transfers from Component Units	
9720	Transfers from Primary Governments	
9910	Other Financing Sources Not Listed in the 9000 Series	
9990	Insurance Recoveries	
5120	Debt Service – Refunded Bonds	
5150	Bond Discounts	
5200	Interfund Transfers – Out	5,000,000
5300	Transfers Out to Component Units/Primary Governments	
Total Other Financing Sources (Uses)		\$862,187

Amounts Expressed in Whole Dollars		<u>General Fund</u> <u>(10)</u>	<u>Student Sponsored</u> <u>Activity Fund</u> <u>(21)</u>	<u>Public Purpose Trust</u> <u>(27)</u>	<u>Other Compt Approved</u> <u>(28)</u>	<u>Athletic / Activity</u> <u>(29)</u>
Special And Extraordinary Items						
9920	Special Items – Gains					
9930	Extraordinary Items – Gains					
5520	Special Items – Losses					
5530	Extraordinary Items – Losses					
Net Change In Fund Balances		\$544,343				
Fund Balance						
0001	Fund Balance - Beginning of Fiscal Year	32,554,789				
Fund Balance - End Of Year		\$33,099,132				

Amounts Expressed in Whole Dollars		<u>Capital Reserve (690.</u> <u>1850)</u> <u>(31)</u>	<u>Capital Reserve (1431)</u> <u>(32)</u>	<u>Other Capital Projects</u> <u>Fund</u> <u>(39)</u>	<u>Debt Service</u> <u>(40)</u>	<u>Permanent</u> <u>(90)</u>
Special And Extraordinary Items						
9920	Special Items – Gains					
9930	Extraordinary Items – Gains					
5520	Special Items – Losses					
5530	Extraordinary Items – Losses					
Net Change In Fund Balances			\$5,356,905	(\$7,411,811)		
Fund Balance						
0001	Fund Balance - Beginning of Fiscal Year		10,008,212	14,777,311		
Fund Balance - End Of Year			\$15,365,117	\$7,365,500		

Amounts Expressed in Whole Dollars		<u>Total Governmental Funds</u>
Special And Extraordinary Items		
9920	Special Items – Gains	
9930	Extraordinary Items – Gains	
5520	Special Items – Losses	
5530	Extraordinary Items – Losses	
Net Change In Fund Balances		(\$1,510,563)
Fund Balance		
0001	Fund Balance - Beginning of Fiscal Year	57,340,312
Fund Balance - End Of Year		\$55,829,749

LEA : 124157802 Tredyffrin-Easttown SD

Printed 11/28/2023 1:35:07 PM

Amounts Expressed in Whole Dollars	<u>Food Service</u> <u>(51)</u>	<u>Child Care</u> <u>Operations</u> <u>(52)</u>	<u>Other Enterprise</u> <u>(58)</u>	<u>TOTAL</u>	<u>Internal Service</u> <u>(60)</u>
Assets And Deferred Outflows Of Resources					
Current Assets					
0100 Cash and Cash Equivalents	431,015			431,015	
0110 Investments					
0130 Due From Other Funds					
0141 Due From Other Governments	121,285			121,285	
0142 State Revenue Receivable					
0143 Federal Revenue Receivable					
0146 Due from Primary Government					
0147 Due from Component Unit					
0150 Other Receivables	378			378	
0170 Inventories	35,299			35,299	
0180 Prepaid Expenses (Expenditures)					
0190 Other Current Assets					
Total Current Assets	\$587,977			\$587,977	
Noncurrent Assets					
0211 Land					
0212 Site Improvements (Net)					
0220 Buildings and Building Improvements (Net)					
0230 Tangible Property and Intangible Right-To-Use Assets (Net)	91,697			91,697	
0250 Construction in Progress					
0260 Long Term Prepayments					
0290 Other Noncurrent Assets					
Total Noncurrent Assets	\$91,697			\$91,697	
0910 Deferred Outflows of Resources	563,098			563,098	
Total Assets And Deferred Outflows Of Resources	\$1,242,772			\$1,242,772	

LEA : 124157802 Tredyffrin-Easttown SD

Printed 11/28/2023 1:35:07 PM

Amounts Expressed in Whole Dollars	<u>Food Service</u> <u>(51)</u>	<u>Child Care</u> <u>Operations</u> <u>(52)</u>	<u>Other Enterprise</u> <u>(58)</u>	<u>TOTAL</u>	<u>Internal Service</u> <u>(60)</u>
Liabilities And Deferred Inflows Of Resources And Net Position					
Current Liabilities					
0400 Due to Other Funds	123,855			123,855	
0411 Due to Other Governments					
0413 Due to Component Unit					
0420 Accounts Payable	296			296	
0430 Contracts Payable					
0440 Current Portion of Long-Term Debt					
0450 Short-Term Payables					
0461 Accrued Salaries and Benefits	3,355			3,355	
0462 Payroll Deductions and Withholding					
0480 Unearned Revenues	41,710			41,710	
0490 Other Current Liabilities					
Total Current Liabilities	\$169,216			\$169,216	
Noncurrent Liabilities					
0510 Bonds Payable					
0520 Extended-Term Financing Agreements Payable					
0530 Lease and Other Right-To-Use Obligations					
0540 Accumulated Compensated Absences	78,825			78,825	
0550 Authority Lease Obligations					
0560 Other Post-Employment Benefits (OPEB)	353,779			353,779	
0570 Net Pension Liability	2,954,523			2,954,523	
0599 Other Noncurrent Liabilities					
Total Noncurrent Liabilities	\$3,387,127			\$3,387,127	
Total Liabilities	\$3,556,343			\$3,556,343	
0950 Deferred Inflows of Resources	227,411			227,411	
Net Position					
0791 Net Investment in Capital Assets	91,697			91,697	
0008 Restricted Net Position (0792 – 0798)					
0799 Unrestricted Net Position	(2,632,679)			(2,632,679)	
Total Net Position	(\$2,540,982)			(\$2,540,982)	
Total Liabilities And Deferred Inflows Of Resources And Net Position	\$1,242,772			\$1,242,772	

Amounts Expressed in Whole Dollars	Food Service (51)	Child Care Operations (52)	Other Enterprise (58)	TOTAL	Internal Service (60)
Operating Revenues					
6600 Food Service Revenue	2,101,422			2,101,422	
0071 Charges for Services					
0072 Other Operating Revenue					
Total Operating Revenues	\$2,101,422			\$2,101,422	
Operating Expenses					
100 Personnel Services – Salaries	1,018,905			1,018,905	
200 Personnel Services – Employee Benefits	585,165			585,165	
300 Purchased Professional and Technical Services					
400 Purchased Property Services	35,408			35,408	
500 Other Purchased Services	1,196			1,196	
600 Supplies	1,165,052			1,165,052	
740 Depreciation	24,726			24,726	
770 Amortization Expense					
810 Dues and Fees	3,494			3,494	
880 Refunds of Prior Years' Receipts					
890 Miscellaneous Expenditures					
Total Operating Expenses	\$2,833,946			\$2,833,946	
Operating Income (Loss)	(\$732,524)			(\$732,524)	
Non Operating Revenues (Expenses)					
6500 Earnings on Investments	15,583			15,583	
6830 Federal Revenue from Intermediary Sources					
6920 Contributions and Donations from Private Sources					
6930 Gains or Losses on Sale of Fixed Assets					
6991 Refunds of a Prior Year Expenditure					
7000 Revenue from State Sources	368,529			368,529	
8000 Revenue from Federal Sources	821,657			821,657	
9990 Insurance Recoveries					
820 Claims and Judgments Against the LEA					
830 Interest					
TOTAL Non Operating Revenues (Expenses)	\$1,205,769			\$1,205,769	
Income (Loss) Before Contributions And Transfers	\$473,245			\$473,245	

Amounts Expressed in Whole Dollars	<u>Food Service</u> <u>(51)</u>	<u>Child Care Operations</u> <u>(52)</u>	<u>Other Enterprise</u> <u>(58)</u>	<u>TOTAL</u>	<u>Internal Service</u> <u>(60)</u>
Contributions, Transfers, and Special and Extraordinary Items					
5200 Interfund Transfers – Out					
5300 Transfers Out to Component Units/Primary Governments					
5520 Special Items – Losses					
5530 Extraordinary Items – Losses					
9300 Interfund Transfers - IN					
9500 Capital Contributions					
9700 Transfers IN From Component Units/Primary Governments					
9920 Special Items – Gains					
9930 Extraordinary Items – Gains					
Change In Net Position	\$473,245			\$473,245	
0002 Net Position - Beginning of Fiscal Year	(3,014,227)			(3,014,227)	
0003 Accounting Changes / Residual Equity Transfers					
Net Position - End Of Year	(\$2,540,982)			(\$2,540,982)	

LEA : 124157802 Tredyffrin-Easttown SD

Printed 11/28/2023 1:35:17 PM

Amounts Expressed in Whole Dollars		<u>Food Service</u> <u>(51)</u>	<u>Child Care Operations</u> <u>(52)</u>	<u>Other Enterprise</u> <u>(58)</u>	<u>TOTAL</u>	<u>Internal Service(60)</u>
Cash Flows From Operating Activities						
0011	Cash Receipts From Users	2,107,188			2,107,188	
0012	Cash Receipts From Assessments Made to Other Funds					
0013	Cash Receipts From Earnings on Investments					
0014	Cash Receipts From Other Operating Revenue					
0015	Cash Payments To Employees For Services	1,776,980			1,776,980	
0016	Cash Payments For Insurance Claims					
0017	Cash Payments To Suppliers For Goods and Services	1,126,518			1,126,518	
0018	Cash Payments For Other Operating Expenses					
Net Cash Provided By (Used For) Operating Activities		(\$796,310)			(\$796,310)	
Cash Flows From Non-Capital Financing Activities						
0021	Receipts From Local Sources - 6000					
0022	Receipts From State Sources - 7000	338,961			338,961	
0023	Receipts From Federal Sources -8000	733,867			733,867	
0024	Notes and Loans Received (Repaid)					
0025	Interest Paid on Notes/Loans - 5100-830					
0026	Operating Transfers In (Out)/Residual Equity Trans					
0027	Operating Transfers In (Out) Primary Government / Comp Unit					
0028	Receipts From Refund of Prior Year Expenditures - 6991					
0029	Special and Extraordinary Gains (losses)					
0030	Receipts from Insurance Recoveries -9990					
Net Cash Prov By (Used for) Non-Capital Financing Activities		\$1,072,828			\$1,072,828	
Cash Flows From Capital and Related Financing Activities						
0031	Payments For Fac Acq, Const, and Imp - 4000	(33,234)			(33,234)	
0032	Gain / (Loss) on Sale of Fixed Assets - 6930					
0033	Proceeds From Extended Term Financing - 9200					
0034	Principal Paid on Financing Agreements					
0035	Interest Paid on Financing Agreements - 5100-830					
0036	(Inc) Dec in Contributed Capital					
Net Cash Prov By (Used for) Capital and Related Financing Activities		(\$33,234)			(\$33,234)	
Cash Flows From Investing Activities						
0041	Earnings on Investments - 6500	15,583			15,583	
0042	Purchase of Inv Securities / Deposits to Inv Pools					
0043	Receipts From Investment Pool Withdrawals					
0044	Proceeds from Sale and Maturity of Inv Securities					

LEA : 124157802 Tredyffrin-Easttown SD

Printed 11/28/2023 1:35:17 PM

0045 Loans Received (Paid)

Net Cash Prov By (Used for) Investing Activities	\$15,583	\$15,583
--	----------	----------

LEA : 124157802 Tredyffrin-Easttown SD

Printed 11/28/2023 1:35:17 PM

	<u>Food Service</u> <u>(51)</u>	<u>Child Care Operations</u> <u>(52)</u>	<u>Other Enterprise</u> <u>(58)</u>	<u>TOTAL</u>	<u>Internal Service</u> <u>(60)</u>
Net Increase (Decrease) in Cash Flows	258,867			258,867	
0004 Cash and Cash Equivalents Beginning of Year					
Cash and Cash Equivalents at Year End	\$258,867			\$258,867	
<hr/>					
Reconciliation of Operating Income (Loss) To Net Cash Provided by (Used For) Operating Activities					
0005 Operating Income (Loss) per REP	(732,524)			(732,524)	
Adjustments					
0051 Depreciation and Net Amortization	24,726			24,726	
0052 Provision for Uncollectible Accounts					
0053 Other Adjustments	122,558			122,558	
Effect of Changes in Assets, Liabilities, Deferred Outflows and Deferred Inflows					
0054 (Inc) Dec In Accounts Receivable (0120-0150)	5,766			5,766	
0055 Advances to Other Funds	(26,304)			(26,304)	
0056 (Inc) Dec in Inventories (0170)	(1,165)			(1,165)	
0057 (Inc) Dec in Prepaid Expenses (0180)					
0058 (Inc) Dec in Other Current or Noncurrent Assets	(185)			(185)	
0064 Deferred Outflows (0910)	59,547			59,547	
0059 Inc (Dec) in Accounts Payable (0400-0450)	296			296	
0060 Inc (Dec) in Accrued Salaries/Benefits (0461)	(56,043)			(56,043)	
0065 Inc (Dec) in Net Pension Liabilities (0570)	331,956			331,956	
0066 Inc (Dec) in Other Postemp Benefit Oblig (0560)	(204,607)			(204,607)	
0061 Inc (Dec) in Payroll Deductions/Withholding (0462)	(43,057)			(43,057)	
0062 Inc (Dec) in Unearned Revenue (0480)					
0063 Inc (Dec) in Other Current or Noncurrent Liabilities					
0067 Deferred Inflows (0950)	(277,274)			(277,274)	
Total Adjustments	(\$63,786)			(\$63,786)	
Cash Provided By (Used for) Total	(\$796,310)			(\$796,310)	
<hr/>					

COMBINED STATEMENT OF CASH FLOWS
SCHEDULE OF NONCASH INVESTING, CAPITAL, AND FINANCING ACTIVITIES

Explanation of Transaction and Balance Sheet Effect	Amount
Total	

LEA : 124157802 Tredyffrin-Easttown SD

Printed 11/28/2023 1:35:19 PM

Amounts Expressed in Whole Dollars		<u>Private Purpose Trust</u> <u>(71)</u>	<u>Investment Trust</u> <u>(72)</u>	<u>Pension Trust</u> <u>(73)</u>	<u>Student Activity Custodial</u> <u>(81)</u>
Assets And Deferred Outflows Of Resources					
Assets					
0100	Cash and Cash Equivalents	59,121			352,880
0110	Investments				
0130	Due From Other Funds				
0140	Due from Other Governments, Primary Government and Component Units				
0150	Other Receivables				
0170	Inventories				
0180	Prepaid Expenses (Expenditures)				
0190	Other Current Assets				
0220	Buildings and Building Improvements (Net)				
0230	Tangible Property and Intangible Right-To-Use Assets (Net)				
Total Assets		\$59,121			\$352,880
0910	Deferred Outflows of Resources				
Total Assets And Deferred Outflows Of Resources		\$59,121			\$352,880

LEA : 124157802 Tredyffrin-Easttown SD

Printed 11/28/2023 1:35:19 PM

Amounts Expressed in Whole Dollars		<u>Other Custodial</u> <u>(89)</u>	<u>Fiduciary Component Units</u> <u>(98)</u>	<u>Total Fiduciary Funds</u>
Assets And Deferred Outflows Of Resources				
Assets				
0100	Cash and Cash Equivalents			412,001
0110	Investments			
0130	Due From Other Funds			
0140	Due from Other Governments, Primary Government and Component Units			
0150	Other Receivables			
0170	Inventories			
0180	Prepaid Expenses (Expenditures)			
0190	Other Current Assets			
0220	Buildings and Building Improvements (Net)			
0230	Tangible Property and Intangible Right-To-Use Assets (Net)			
Total Assets				\$412,001
0910	Deferred Outflows of Resources			
Total Assets And Deferred Outflows Of Resources				\$412,001

LEA : 124157802 Tredyffrin-Easttown SD

Printed 11/28/2023 1:35:19 PM

Amounts Expressed in Whole Dollars	<u>Private Purpose Trust</u> <u>(71)</u>	<u>Investment Trust</u> <u>(72)</u>	<u>Pension Trust</u> <u>(73)</u>	<u>Student Activity Custodial</u> <u>(81)</u>
Liabilities, Deferred Inflows Of Resources And Net Position				
Liabilities				
0400 Due to Other Funds				
0410 Due to Other Governments, Primary Government and Component Units				
0420 Accounts Payable				
0430 Contracts Payable				
0450 Short-Term Payables				
0460 Payroll Accruals and Withholdings				
0480 Unearned Revenues				
0490 Other Current Liabilities				
Total Liabilities				
0950 Deferred Inflows of Resources				
Net Position				
0791 Net Investment in Capital Assets				
0009 Restricted Net Position (0792 – 0798)	59,121			352,880
0799 Unrestricted Net Position				
Total Net Position	\$59,121			\$352,880
Total Liabilities, Deferred Inflows Of Resources And Net Position	\$59,121			\$352,880

LEA : 124157802 Tredyffrin-Easttown SD

Printed 11/28/2023 1:35:19 PM

Amounts Expressed in Whole Dollars		<u>Other Custodial</u> <u>(89)</u>	<u>Fiduciary Component Units</u> <u>(98)</u>	<u>Total Fiduciary Funds</u>
Liabilities, Deferred Inflows Of Resources And Net Position				
Liabilities				
0400	Due to Other Funds			
0410	Due to Other Governments, Primary Government and Component Units			
0420	Accounts Payable			
0430	Contracts Payable			
0450	Short-Term Payables			
0460	Payroll Accruals and Withholdings			
0480	Unearned Revenues			
0490	Other Current Liabilities			
Total Liabilities				
0950	Deferred Inflows of Resources			
Net Position				
0791	Net Investment in Capital Assets			
0009	Restricted Net Position (0792 – 0798)			412,001
0799	Unrestricted Net Position			
Total Net Position				\$412,001
Total Liabilities, Deferred Inflows Of Resources And Net Position				\$412,001

LEA : 124157802 Tredyffrin-Easttown SD

Printed 11/28/2023 1:35:20 PM

Amounts Expressed in Whole Dollars	<u>Private Purpose Trust</u> <u>(71)</u>	<u>Investment Trust</u> <u>(72)</u>	<u>Pension Trust</u> <u>(73)</u>	<u>Student Activity</u> <u>Custodial</u> <u>(81)</u>	<u>Other Custodial</u> <u>(89)</u>	<u>Fiduciary Component</u> <u>Units</u> <u>(98)</u>
Additions						
0091 Gifts and Contributions	43,710			971,425		
0095 Net Investment Earnings						
0092 Other Additions						
Deductions						
0093 Scholarships Awarded	45,100					
0094 Other Deductions				933,603		
Change In Net Position	(\$1,390)			\$37,822		
0006 Net Position – Beginning of Fiscal Year	60,511			315,058		
0007 Net Position Held in Trust for Pension Benefits						
Net Position - End of Fiscal Year	\$59,121			\$352,880		

LEA : 124157802 Tredyffrin-Easttown SD

Printed 11/28/2023 1:35:20 PM

Amounts Expressed in Whole Dollars		<u>Total Fiduciary</u> <u>Funds</u>
Additions		
0091	Gifts and Contributions	1,015,135
0095	Net Investment Earnings	
0092	Other Additions	
Deductions		
0093	Scholarships Awarded	45,100
0094	Other Deductions	933,603
Change In Net Position		\$36,432
0006	Net Position – Beginning of Fiscal Year	375,569
0007	Net Position Held in Trust for Pension Benefits	
Net Position - End of Fiscal Year		\$412,001

	Revenue Reported In Current Year	Current Year Tax Accrual	Prior Year Tax Accrual	Taxes Collected In Current Year
Revenue from Local Sources				
6111 Current Real Estate Taxes	127,950,660.84			127,950,660.84
6112 Interim Real Estate Taxes	573,482.19			573,482.19
6113 Public Utility Realty Taxes	119,711.28			119,711.28
6153 Current Act 511 Real Estate Transfer Taxes	3,582,047.58			3,582,047.58
6411 Delinquent Real Estate Taxes	1,230,699.27			1,230,699.27
6500 Earnings on Investments	3,867,541.64			
6700 Revenues from LEA Activities	389,821.14			
6832 Federal IDEA Revenue Received as Pass Through	1,004,896.00			
6833 Federal ARP Act IDEA Revenue Received as Pass Through	23,290.59			
6910 Rentals	646,222.83			
6999 Other Revenues Not Specified Above	196,012.62			
TOTAL Revenue from Local Sources	\$139,584,385.98			\$133,456,601.16

	Revenue Reported In Current Year			
<u>Revenue from State Sources</u>				
7111 Basic Education Funding-Formula	4,625,336.78			
7112 Basic Education Funding-Social Security	2,475,411.25			
7160 Tuition for Orphans Subsidy	8,539.13			
7271 Special Education funds for School-Aged Pupils	2,600,284.39			
7311 Pupil Transportation Subsidy	880,663.72			
7312 Nonpublic and Charter School Pupil Transportation Subsidy	192,885.00			
7320 Rental and Sinking Fund Payments / Building Reimbursement Subsidy	(0.01)			
7330 Health Services (Medical, Dental, Nurse, Act 25)	155,235.52			
7340 State Property Tax Reduction Allocation	2,646,884.85			
7361 School Safety and Security Grants	36,326.80			
7362 School Mental Health & Safety and Security Grants	77,164.22			
7505 Ready to Learn Block Grant	199,614.00			
7820 State Share of Retirement Contributions	11,815,586.57			
TOTAL Revenue from State Sources	\$25,713,932.22			

	Revenue Reported In Current Year			
<u>Revenue from Federal Sources</u>				
8514 Title I - Improving the Academic Achievement of the Disadvantaged	162,993.16			
8515 Title II - Preparing, Training, and Recruiting High Quality Teachers and Principals	99,090.64			
8516 Title III - Language Instruction for English Learners and Immigrant Students	39,901.02			
8517 Title IV - 21st Century Schools	18,017.16			
8744 ARP ESSER - Elementary and Secondary School Emergency Relief Fund	516,162.85			
8751 ARP ESSER Learning Loss	37,926.16			
8752 ARP ESSER Summer Programs	16,706.72			
8753 ARP ESSER Afterschool Programs	16,706.94			
8754 ARP ESSER Homeless Children and Youth Funds	7,580.82			
8810 School-Based Access Medicaid Reimbursement Program (SBAP) Reimbursements (Access)	694,013.30			
8820 Medical Assistance Reimbursement for Administrative Claiming (Quarterly) Program	21,628.62			
TOTAL Revenue from Federal Sources	\$1,630,727.39			
TOTAL FROM ALL SOURCES	\$166,929,045.59			\$133,456,601.16

LEA : 124157802 Tredyffrin-Easttown SD

Printed 11/28/2023 1:35:23 PM

	<u>General Fund (10)</u>	<u>Student Sponsored Activity Fund (21)</u>	<u>Public Purpose Trust (27)</u>	<u>Other Compt Approved (28)</u>	<u>Athletic / Activity (29)</u>	<u>Capital Reserve (690, 1850) (31)</u>
6000 Revenue from Local Sources						
6111 Current Real Estate Taxes	127,950,660.84					
6112 Interim Real Estate Taxes	573,482.19					
6113 Public Utility Realty Taxes	119,711.28					
6153 Current Act 511 Real Estate Transfer Taxes	3,582,047.58					
6411 Delinquent Real Estate Taxes	1,230,699.27					
6500 Earnings on Investments	3,867,541.64					
6700 Revenues from LEA Activities	389,821.14					
6832 Federal IDEA Revenue Received as Pass Through	1,004,896.00					
6833 Federal ARP Act IDEA Revenue Received as Pass Through	23,290.59					
6910 Rentals	646,222.83					
6999 Other Revenues Not Specified Above	196,012.62					
6000 Total Revenue from Local Sources	\$139,584,385.98					
7000 Revenue from State Sources						
7111 Basic Education Funding-Formula	4,625,336.78					
7112 Basic Education Funding-Social Security	2,475,411.25					
7160 Tuition for Orphans Subsidy	8,539.13					
7271 Special Education funds for School-Aged Pupils	2,600,284.39					
7311 Pupil Transportation Subsidy	880,663.72					
7312 Nonpublic and Charter School Pupil Transportation Subsidy	192,885.00					
7320 Rental and Sinking Fund Payments / Building Reimbursement Subsidy	(0.01)					
7330 Health Services (Medical, Dental, Nurse, Act 25)	155,235.52					
7340 State Property Tax Reduction Allocation	2,646,884.85					
7361 School Safety and Security Grants	36,326.80					
7362 School Mental Health & Safety and Security Grants	77,164.22					
7505 Ready to Learn Block Grant	199,614.00					
7820 State Share of Retirement Contributions	11,815,586.57					
7000 Total Revenue from State Sources	\$25,713,932.22					
8000 Revenue from Federal Sources						
8514 Title I - Improving the Academic Achievement of the Disadvantaged	162,993.16					
8515 Title II - Preparing, Training, and Recruiting High Quality Teachers and Principals	99,090.64					
8516 Title III - Language Instruction for English Learners and Immigrant Students	39,901.02					
8517 Title IV - 21st Century Schools	18,017.16					

LEA : 124157802 Tredyffrin-Easttown SD

Printed 11/28/2023 1:35:23 PM

	<u>Capital Reserve</u> <u>(1431) (32)</u>	<u>Other Capital</u> <u>Projects Fund (39)</u>	<u>Debt Service (40)</u>	<u>Permanent (90)</u>	<u>Total</u>
6000 Revenue from Local Sources					
6111 Current Real Estate Taxes					127,950,660.84
6112 Interim Real Estate Taxes					573,482.19
6113 Public Utility Realty Taxes					119,711.28
6153 Current Act 511 Real Estate Transfer Taxes					3,582,047.58
6411 Delinquent Real Estate Taxes					1,230,699.27
6500 Earnings on Investments	356,905.05	463,634.51			4,688,081.20
6700 Revenues from LEA Activities					389,821.14
6832 Federal IDEA Revenue Received as Pass Through					1,004,896.00
6833 Federal ARP Act IDEA Revenue Received as Pass Through					23,290.59
6910 Rentals					646,222.83
6999 Other Revenues Not Specified Above					196,012.62
6000 Total Revenue from Local Sources	\$356,905.05	\$463,634.51			\$140,404,925.54
7000 Revenue from State Sources					
7111 Basic Education Funding-Formula					4,625,336.78
7112 Basic Education Funding-Social Security					2,475,411.25
7160 Tuition for Orphans Subsidy					8,539.13
7271 Special Education funds for School-Aged Pupils					2,600,284.39
7311 Pupil Transportation Subsidy					880,663.72
7312 Nonpublic and Charter School Pupil Transportation Subsidy					192,885.00
7320 Rental and Sinking Fund Payments / Building Reimbursement Subsidy					(0.01)
7330 Health Services (Medical, Dental, Nurse, Act 25)					155,235.52
7340 State Property Tax Reduction Allocation					2,646,884.85
7361 School Safety and Security Grants					36,326.80
7362 School Mental Health & Safety and Security Grants					77,164.22
7505 Ready to Learn Block Grant					199,614.00
7820 State Share of Retirement Contributions					11,815,586.57
7000 Total Revenue from State Sources					\$25,713,932.22
8000 Revenue from Federal Sources					
8514 Title I - Improving the Academic Achievement of the Disadvantaged					162,993.16
8515 Title II - Preparing, Training, and Recruiting High Quality Teachers and Principals					99,090.64
8516 Title III - Language Instruction for English Learners and Immigrant Students					39,901.02
8517 Title IV - 21st Century Schools					18,017.16

LEA : 124157802 Tredyffrin-Easttown SD

Printed 11/28/2023 1:35:23 PM

	<u>General Fund (10)</u>	<u>Student Sponsored Activity Fund (21)</u>	<u>Public Purpose Trust (27)</u>	<u>Other Compt Approved (28)</u>	<u>Athletic / Activity (29)</u>	<u>Capital Reserve (690, 1850) (31)</u>
8000 Revenue from Federal Sources						
8744 ARP ESSER - Elementary and Secondary School Emergency Relief Fund	516,162.85					
8751 ARP ESSER Learning Loss	37,926.16					
8752 ARP ESSER Summer Programs	16,706.72					
8753 ARP ESSER Afterschool Programs	16,706.94					
8754 ARP ESSER Homeless Children and Youth Funds	7,580.82					
8810 School-Based Access Medicaid Reimbursement Program (SBAP) Reimbursements (Access)	694,013.30					
8820 Medical Assistance Reimbursement for Administrative Claiming (Quarterly) Program	21,628.62					
8000 Total Revenue from Federal Sources	\$1,630,727.39					
9000 Other Financing Sources						
9220 Leases and Other Right-to-Use Arrangements						
9310 General Fund Transfers						
9400 Sale of or Compensation for Loss of Fixed Assets						
9000 Total Other Financing Sources						
Total From All Sources	\$166,929,045.59					

LEA : 124157802 Tredyffrin-Easttown SD

Printed 11/28/2023 1:35:23 PM

	<u>Capital Reserve</u> <u>(1431) (32)</u>	<u>Other Capital</u> <u>Projects Fund (39)</u>	<u>Debt Service (40)</u>	<u>Permanent (90)</u>	<u>Total</u>
8000 Revenue from Federal Sources					
8744 ARP ESSER - Elementary and Secondary School Emergency Relief Fund					516,162.85
8751 ARP ESSER Learning Loss					37,926.16
8752 ARP ESSER Summer Programs					16,706.72
8753 ARP ESSER Afterschool Programs					16,706.94
8754 ARP ESSER Homeless Children and Youth Funds					7,580.82
8810 School-Based Access Medicaid Reimbursement Program (SBAP) Reimbursements (Access)					694,013.30
8820 Medical Assistance Reimbursement for Administrative Claiming (Quarterly) Program					21,628.62
8000 Total Revenue from Federal Sources					\$1,630,727.39
9000 Other Financing Sources					
9220 Leases and Other Right-to-Use Arrangements		839,496.43			839,496.43
9310 General Fund Transfers	5,000,000.00				5,000,000.00
9400 Sale of or Compensation for Loss of Fixed Assets		22,691.25			22,691.25
9000 Total Other Financing Sources	\$5,000,000.00	\$862,187.68			\$5,862,187.68
Total From All Sources	\$5,356,905.05	\$1,325,822.19			\$173,611,772.83

LEA : 124157802 Tredyffrin-Easttown SD

Printed 11/28/2023 1:35:26 PM

	<u>General Fund (10)</u>	<u>Student Sponsored Activity Fund (21)</u>	<u>Public Purpose Trust (27)</u>	<u>Other Compt Approved (28)</u>	<u>Athletic / Activity (29)</u>	<u>Capital Reserve (690. 1850) (31)</u>
Revenue from Local Sources	139,584,385.98					
Revenue from State Sources	25,713,932.22					
Revenue from Federal Sources	1,630,727.39					
Other Financing Sources						
Total From All Sources	\$166,929,045.59					

LEA : 124157802 Tredyffrin-Easttown SD

Printed 11/28/2023 1:35:26 PM

	<u>Capital Reserve (1431)</u> <u>(32)</u>	<u>Other Capital Projects</u> <u>Fund (39)</u>	<u>Debt Service (40)</u>	<u>Permanent (90)</u>	<u>Total</u>
Revenue from Local Sources	356,905.05	463,634.51			140,404,925.54
Revenue from State Sources					25,713,932.22
Revenue from Federal Sources					1,630,727.39
Other Financing Sources	5,000,000.00	862,187.68			5,862,187.68
Total From All Sources	\$5,356,905.05	\$1,325,822.19			\$173,611,772.83

LEA : 124157802 Tredyffrin-Easttown SD

Printed 11/28/2023 1:35:29 PM

General Fund (10)

1000 Instruction		Total
100 <u>Personnel Services – Salaries</u>		
100 Personnel Services – Salaries		46,620,058.24
Total Personnel Services – Salaries		\$46,620,058.24
200 <u>Personnel Services – Employee Benefits</u>		
220 Social Security Contributions		3,465,925.42
230 PSERS Retirement Contributions		16,319,009.50
250 Unemployment Compensation		2,479.01
260 Workers' Compensation		70,039.27
270 Group Insurance – Self-Insurance		6,930,630.32
299 All Other Employee Benefits		233,715.26
Total Personnel Services – Employee Benefits		\$27,021,798.78
300 <u>Purchased Professional and Technical Services</u>		
310 Official / Administrative Services		47,956.50
322 Professional Educational Services – Ius		7,755,996.26
329 Professional Educational Services – Other		12,796,424.13
340 Technical Services		6,177.69
Total Purchased Professional and Technical Services		\$20,606,554.58
400 <u>Purchased Property Services</u>		
430 Repairs and Maintenance Services		28,619.65
440 Rentals		635,380.27
Total Purchased Property Services		\$663,999.92
500 <u>Other Purchased Services</u>		
510 Student Transportation Services		102,718.27
530 Communications		55,324.96
550 Printing and Binding		28,148.49
561 Tuition To Other School Districts Within the State		139,400.81
562 Tuition To Pennsylvania Charter Schools		662,916.51
563 Tuition To Nonpublic Schools		381,328.85
564 Tuition To Career and Technology Centers		782,696.00
567 Tuition To Approved Private Schools (APS) and PA Chartered Schools for the Deaf and Blind		1,416,766.50
568 Tuition To Private Residential Rehabilitative Institutions (PRRI) [In-State] and Detention Centers		1,925,448.95
580 Travel		3,426.85
594 IU Payment By Withholding for Institutionalized Children's Programs – Special Classes		833.41
Total Other Purchased Services		\$5,499,009.60
600 <u>Supplies</u>		
610 General Supplies		952,218.79
640 Books and Periodicals		370,329.13
650 Supplies & Fees – Technology Related		1,192,645.90
Total Supplies		\$2,515,193.82
700 <u>Property</u>		
756 Capitalized Technology Equipment – Original		11,377.59
762 Capitalized Equipment - Replacement		306,844.13
Total Property		\$318,221.72

LEA : 124157802 Tredyffrin-Easttown SD

Printed 11/28/2023 1:35:29 PM

General Fund (10)	
1000 Instruction	<u>Total</u>
800 <u>Other Objects</u>	
810 Dues and Fees	38,515.05
890 Miscellaneous Expenditures	30,019.00
Total Other Objects	\$68,534.05
Total 1000 Instruction	\$103,313,370.71

LEA : 124157802 Tredyffrin-Easttown SD

Printed 11/28/2023 1:35:29 PM

General Fund (10)

1100 Regular Programs – Elementary / Secondary

	Elementary	Secondary	Federal	Total
100 <u>Personnel Services – Salaries</u>				
100 Personnel Services – Salaries	19,742,614.88	19,347,198.81	580,236.22	39,670,049.91
Total Personnel Services – Salaries	\$19,742,614.88	\$19,347,198.81	\$580,236.22	\$39,670,049.91
200 <u>Personnel Services – Employee Benefits</u>				
220 Social Security Contributions	1,470,963.27	1,433,343.50	43,517.00	2,947,823.77
230 PSERS Retirement Contributions	6,915,108.94	6,770,135.90	205,983.00	13,891,227.84
250 Unemployment Compensation	1,139.98	1,139.99		2,279.97
260 Workers' Compensation	32,954.20	32,954.21		65,908.41
270 Group Insurance – Self-Insurance	2,865,863.21	2,970,005.94		5,835,869.15
299 All Other Employee Benefits	106,201.41	88,810.93		195,012.34
Total Personnel Services – Employee Benefits	\$11,392,231.01	\$11,296,390.47	\$249,500.00	\$22,938,121.48
300 <u>Purchased Professional and Technical Services</u>				
329 Professional Educational Services – Other	2,010,909.99	2,036,198.32	45,350.44	4,092,458.75
340 Technical Services	1,704.84	4,472.85		6,177.69
Total Purchased Professional and Technical Services	\$2,012,614.83	\$2,040,671.17	\$45,350.44	\$4,098,636.44
400 <u>Purchased Property Services</u>				
430 Repairs and Maintenance Services	12,540.07	16,079.58		28,619.65
440 Rentals	317,292.79	318,087.48		635,380.27
Total Purchased Property Services	\$329,832.86	\$334,167.06		\$663,999.92
500 <u>Other Purchased Services</u>				
510 Student Transportation Services	38,635.82	62,604.28	1,478.17	102,718.27
530 Communications	27,038.58	28,286.38		55,324.96
550 Printing and Binding	5,550.97	22,597.52		28,148.49
562 Tuition To Pennsylvania Charter Schools	331,458.25	331,458.26		662,916.51
580 Travel	1,829.20	1,597.65		3,426.85
Total Other Purchased Services	\$404,512.82	\$446,544.09	\$1,478.17	\$852,535.08
600 <u>Supplies</u>				
610 General Supplies	336,249.93	536,236.36	13,544.05	886,030.34
640 Books and Periodicals	144,494.79	176,094.40	5,028.37	325,617.56
650 Supplies & Fees – Technology Related	533,689.13	581,032.09	16,617.45	1,131,338.67
Total Supplies	\$1,014,433.85	\$1,293,362.85	\$35,189.87	\$2,342,986.57
700 <u>Property</u>				
756 Capitalized Technology Equipment – Original	3,131.25	8,246.34		11,377.59
762 Capitalized Equipment - Replacement	152,996.56	153,847.57		306,844.13
Total Property	\$156,127.81	\$162,093.91		\$318,221.72
800 <u>Other Objects</u>				
810 Dues and Fees	11,836.02	26,679.03		38,515.05
890 Miscellaneous Expenditures		30,019.00		30,019.00
Total Other Objects	\$11,836.02	\$56,698.03		\$68,534.05
Total 1100 Regular Programs – Elementary / Secondary	\$35,064,204.08	\$34,977,126.39	\$911,754.70	\$70,953,085.17

LEA : 124157802 Tredyffrin-Easttown SD

Printed 11/28/2023 1:35:29 PM

General Fund (10)

1110 Regular Programs

	Elementary	Secondary	Federal	Total
100 <u>Personnel Services – Salaries</u>				
100 Personnel Services – Salaries	19,742,614.88	19,347,198.81	580,236.22	39,670,049.91
Total Personnel Services – Salaries	\$19,742,614.88	\$19,347,198.81	\$580,236.22	\$39,670,049.91
200 <u>Personnel Services – Employee Benefits</u>				
220 Social Security Contributions	1,470,963.27	1,433,343.50	43,517.00	2,947,823.77
230 PSERS Retirement Contributions	6,915,108.94	6,770,135.90	205,983.00	13,891,227.84
250 Unemployment Compensation	1,139.98	1,139.99		2,279.97
260 Workers' Compensation	32,954.20	32,954.21		65,908.41
270 Group Insurance – Self-Insurance	2,865,863.21	2,970,005.94		5,835,869.15
299 All Other Employee Benefits	106,201.41	88,810.93		195,012.34
Total Personnel Services – Employee Benefits	\$11,392,231.01	\$11,296,390.47	\$249,500.00	\$22,938,121.48
300 <u>Purchased Professional and Technical Services</u>				
329 Professional Educational Services – Other	2,010,909.99	2,036,198.32		4,047,108.31
340 Technical Services	1,704.84	4,472.85		6,177.69
Total Purchased Professional and Technical Services	\$2,012,614.83	\$2,040,671.17		\$4,053,286.00
400 <u>Purchased Property Services</u>				
430 Repairs and Maintenance Services	12,540.07	16,079.58		28,619.65
440 Rentals	317,292.79	318,087.48		635,380.27
Total Purchased Property Services	\$329,832.86	\$334,167.06		\$663,999.92
500 <u>Other Purchased Services</u>				
510 Student Transportation Services	38,635.82	62,604.28		101,240.10
530 Communications	27,038.58	28,286.38		55,324.96
550 Printing and Binding	5,550.97	22,597.52		28,148.49
562 Tuition To Pennsylvania Charter Schools	331,458.25	331,458.26		662,916.51
580 Travel	1,829.20	1,597.65		3,426.85
Total Other Purchased Services	\$404,512.82	\$446,544.09		\$851,056.91
600 <u>Supplies</u>				
610 General Supplies	336,249.93	536,236.36		872,486.29
640 Books and Periodicals	144,494.79	176,094.40		320,589.19
650 Supplies & Fees – Technology Related	533,689.13	581,032.09		1,114,721.22
Total Supplies	\$1,014,433.85	\$1,293,362.85		\$2,307,796.70
700 <u>Property</u>				
756 Capitalized Technology Equipment – Original	3,131.25	8,246.34		11,377.59
762 Capitalized Equipment - Replacement	152,996.56	153,847.57		306,844.13
Total Property	\$156,127.81	\$162,093.91		\$318,221.72
800 <u>Other Objects</u>				
810 Dues and Fees	11,836.02	26,679.03		38,515.05
890 Miscellaneous Expenditures		30,019.00		30,019.00
Total Other Objects	\$11,836.02	\$56,698.03		\$68,534.05
Total 1110 Regular Programs	\$35,064,204.08	\$34,977,126.39	\$829,736.22	\$70,871,066.69

LEA : 124157802 Tredyffrin-Easttown SD

Printed 11/28/2023 1:35:29 PM

General Fund (10)

1190 Federally-Funded Regular Programs	<u>Elementary</u>	<u>Secondary</u>	<u>Federal</u>	<u>Total</u>
300 <u>Purchased Professional and Technical Services</u>				
329 Professional Educational Services – Other			45,350.44	45,350.44
Total Purchased Professional and Technical Services			\$45,350.44	\$45,350.44
500 <u>Other Purchased Services</u>				
510 Student Transportation Services			1,478.17	1,478.17
Total Other Purchased Services			\$1,478.17	\$1,478.17
600 <u>Supplies</u>				
610 General Supplies			13,544.05	13,544.05
640 Books and Periodicals			5,028.37	5,028.37
650 Supplies & Fees – Technology Related			16,617.45	16,617.45
Total Supplies			\$35,189.87	\$35,189.87
Total 1190 Federally-Funded Regular Programs			\$82,018.48	\$82,018.48

LEA : 124157802 Tredyffrin-Easttown SD

Printed 11/28/2023 1:35:29 PM

General Fund (10)

1200 Special Programs – Elementary / Secondary	Elementary	Secondary	Federal	Total
100 <u>Personnel Services – Salaries</u>				
100 Personnel Services – Salaries	3,915,059.71	2,923,434.51		6,838,494.22
Total Personnel Services – Salaries	\$3,915,059.71	\$2,923,434.51		\$6,838,494.22
200 <u>Personnel Services – Employee Benefits</u>				
220 Social Security Contributions	291,951.52	217,746.78		509,698.30
230 PSERS Retirement Contributions	1,366,640.28	1,021,816.53		2,388,456.81
250 Unemployment Compensation	90.47	90.48		180.95
260 Workers' Compensation	2,065.43	2,065.43		4,130.86
270 Group Insurance – Self-Insurance	614,296.72	468,495.63		1,082,792.35
299 All Other Employee Benefits	21,805.77	16,897.15		38,702.92
Total Personnel Services – Employee Benefits	\$2,296,850.19	\$1,727,112.00		\$4,023,962.19
300 <u>Purchased Professional and Technical Services</u>				
310 Official / Administrative Services	23,978.25	23,978.25		47,956.50
322 Professional Educational Services – Ius	3,128,520.55	3,085,917.94	1,541,557.77	7,755,996.26
329 Professional Educational Services – Other	4,126,982.68	4,126,982.70	450,000.00	8,703,965.38
Total Purchased Professional and Technical Services	\$7,279,481.48	\$7,236,878.89	\$1,991,557.77	\$16,507,918.14
500 <u>Other Purchased Services</u>				
561 Tuition To Other School Districts Within the State	69,700.40	69,700.41		139,400.81
563 Tuition To Nonpublic Schools	190,664.42	190,664.43		381,328.85
567 Tuition To Approved Private Schools (APS) and PA Chartered Schools for the Deaf and Blind	708,383.24	708,383.26		1,416,766.50
568 Tuition To Private Residential Rehabilitative Institutions (PRRI) [In-State] and Detention Centers	962,724.47	962,724.48		1,925,448.95
594 IU Payment By Withholding for Institutionalized Children's Programs – Special Classes			833.41	833.41
Total Other Purchased Services	\$1,931,472.53	\$1,931,472.58	\$833.41	\$3,863,778.52
600 <u>Supplies</u>				
610 General Supplies	35,276.41	30,423.89		65,700.30
640 Books and Periodicals	22,825.49	21,657.55		44,483.04
650 Supplies & Fees – Technology Related	30,653.60	30,653.63		61,307.23
Total Supplies	\$88,755.50	\$82,735.07		\$171,490.57
Total 1200 Special Programs – Elementary / Secondary	\$15,511,619.41	\$13,901,633.05	\$1,992,391.18	\$31,405,643.64

LEA : 124157802 Tredyffrin-Easttown SD

Printed 11/28/2023 1:35:29 PM

General Fund (10)

1210 Life Skills Support

	<u>Elementary</u>	<u>Secondary</u>	<u>Federal</u>	<u>Total</u>
100 <u>Personnel Services – Salaries</u>				
100 Personnel Services – Salaries	40,042.41	40,042.41		80,084.82
Total Personnel Services – Salaries	\$40,042.41	\$40,042.41		\$80,084.82
200 <u>Personnel Services – Employee Benefits</u>				
220 Social Security Contributions	2,992.58	2,992.59		5,985.17
230 PSERS Retirement Contributions	14,118.93	14,118.93		28,237.86
250 Unemployment Compensation	90.47	90.48		180.95
260 Workers' Compensation	2,065.43	2,065.43		4,130.86
270 Group Insurance – Self-Insurance	14,749.91	14,749.94		29,499.85
Total Personnel Services – Employee Benefits	\$34,017.32	\$34,017.37		\$68,034.69
300 <u>Purchased Professional and Technical Services</u>				
329 Professional Educational Services – Other	4,111,929.96	4,111,929.97	450,000.00	8,673,859.93
Total Purchased Professional and Technical Services	\$4,111,929.96	\$4,111,929.97	\$450,000.00	\$8,673,859.93
500 <u>Other Purchased Services</u>				
561 Tuition To Other School Districts Within the State	69,700.40	69,700.41		139,400.81
563 Tuition To Nonpublic Schools	190,664.42	190,664.43		381,328.85
567 Tuition To Approved Private Schools (APS) and PA Chartered Schools for the Deaf and Blind	505,572.30	505,572.31		1,011,144.61
568 Tuition To Private Residential Rehabilitative Institutions (PRRI) [In-State] and Detention Centers	962,724.47	962,724.48		1,925,448.95
Total Other Purchased Services	\$1,728,661.59	\$1,728,661.63		\$3,457,323.22
Total 1210 Life Skills Support	\$5,914,651.28	\$5,914,651.38	\$450,000.00	\$12,279,302.66

LEA : 124157802 Tredyffrin-Easttown SD

Printed 11/28/2023 1:35:29 PM

General Fund (10)

1220 Sensory Support	Elementary	Secondary	Federal	Total
100 <u>Personnel Services – Salaries</u>				
100 Personnel Services – Salaries	264,863.17	44,630.04		309,493.21
Total Personnel Services – Salaries	\$264,863.17	\$44,630.04		\$309,493.21
200 <u>Personnel Services – Employee Benefits</u>				
220 Social Security Contributions	19,547.42	3,417.72		22,965.14
230 PSERS Retirement Contributions	92,881.50	15,736.50		108,618.00
270 Group Insurance – Self-Insurance	44,565.34			44,565.34
299 All Other Employee Benefits	1,454.13			1,454.13
Total Personnel Services – Employee Benefits	\$158,448.39	\$19,154.22		\$177,602.61
600 <u>Supplies</u>				
610 General Supplies	576.59			576.59
Total Supplies	\$576.59			\$576.59
Total 1220 Sensory Support	\$423,888.15	\$63,784.26		\$487,672.41

LEA : 124157802 Tredyffrin-Easttown SD

Printed 11/28/2023 1:35:29 PM

General Fund (10)

1240 Academic Support

	<u>Elementary</u>	<u>Secondary</u>	<u>Federal</u>	<u>Total</u>
100 <u>Personnel Services – Salaries</u>				
100 Personnel Services – Salaries	3,610,154.13	2,838,762.06		6,448,916.19
Total Personnel Services – Salaries	\$3,610,154.13	\$2,838,762.06		\$6,448,916.19
200 <u>Personnel Services – Employee Benefits</u>				
220 Social Security Contributions	269,411.52	211,336.47		480,747.99
230 PSERS Retirement Contributions	1,259,639.85	991,961.10		2,251,600.95
270 Group Insurance – Self-Insurance	554,981.47	453,745.69		1,008,727.16
299 All Other Employee Benefits	20,351.64	16,897.15		37,248.79
Total Personnel Services – Employee Benefits	\$2,104,384.48	\$1,673,940.41		\$3,778,324.89
300 <u>Purchased Professional and Technical Services</u>				
310 Official / Administrative Services	23,978.25	23,978.25		47,956.50
329 Professional Educational Services – Other	15,052.72	15,052.73		30,105.45
Total Purchased Professional and Technical Services	\$39,030.97	\$39,030.98		\$78,061.95
600 <u>Supplies</u>				
610 General Supplies	34,699.82	30,423.89		65,123.71
640 Books and Periodicals	22,825.49	21,657.55		44,483.04
650 Supplies & Fees – Technology Related	30,653.60	30,653.63		61,307.23
Total Supplies	\$88,178.91	\$82,735.07		\$170,913.98
Total 1240 Academic Support	\$5,841,748.49	\$4,634,468.52		\$10,476,217.01

LEA : 124157802 Tredyffrin-Easttown SD

Printed 11/28/2023 1:35:29 PM

General Fund (10)

1241 Learning Support – Public	Elementary	Secondary	Federal	Total
100 Personnel Services – Salaries				
100 Personnel Services – Salaries	2,707,501.82	2,426,751.33		5,134,253.15
Total Personnel Services – Salaries	\$2,707,501.82	\$2,426,751.33		\$5,134,253.15
200 Personnel Services – Employee Benefits				
220 Social Security Contributions	202,063.72	180,685.07		382,748.79
230 PSERS Retirement Contributions	951,068.01	852,460.20		1,803,528.21
270 Group Insurance – Self-Insurance	418,716.97	381,886.47		800,603.44
299 All Other Employee Benefits	17,876.64	15,751.68		33,628.32
Total Personnel Services – Employee Benefits	\$1,589,725.34	\$1,430,783.42		\$3,020,508.76
300 Purchased Professional and Technical Services				
310 Official / Administrative Services	23,978.25	23,978.25		47,956.50
329 Professional Educational Services – Other	15,052.72	15,052.73		30,105.45
Total Purchased Professional and Technical Services	\$39,030.97	\$39,030.98		\$78,061.95
600 Supplies				
610 General Supplies	28,726.29	24,450.35		53,176.64
640 Books and Periodicals	22,779.92	21,611.98		44,391.90
650 Supplies & Fees – Technology Related	30,137.30	30,137.32		60,274.62
Total Supplies	\$81,643.51	\$76,199.65		\$157,843.16
Total 1241 Learning Support – Public	\$4,417,901.64	\$3,972,765.38		\$8,390,667.02

LEA : 124157802 Tredyffrin-Easttown SD

Printed 11/28/2023 1:35:29 PM

General Fund (10)

1243 Gifted Support

	<u>Elementary</u>	<u>Secondary</u>	<u>Federal</u>	<u>Total</u>
100 <u>Personnel Services – Salaries</u>				
100 Personnel Services – Salaries	902,652.31	412,010.73		1,314,663.04
Total Personnel Services – Salaries	\$902,652.31	\$412,010.73		\$1,314,663.04
200 <u>Personnel Services – Employee Benefits</u>				
220 Social Security Contributions	67,347.80	30,651.40		97,999.20
230 PSERS Retirement Contributions	308,571.84	139,500.90		448,072.74
270 Group Insurance – Self-Insurance	136,264.50	71,859.22		208,123.72
299 All Other Employee Benefits	2,475.00	1,145.47		3,620.47
Total Personnel Services – Employee Benefits	\$514,659.14	\$243,156.99		\$757,816.13
600 <u>Supplies</u>				
610 General Supplies	5,973.53	5,973.54		11,947.07
640 Books and Periodicals	45.57	45.57		91.14
650 Supplies & Fees – Technology Related	516.30	516.31		1,032.61
Total Supplies	\$6,535.40	\$6,535.42		\$13,070.82
Total 1243 Gifted Support	\$1,423,846.85	\$661,703.14		\$2,085,549.99

LEA : 124157802 Tredyffrin-Easttown SD

Printed 11/28/2023 1:35:29 PM

General Fund (10)

1280 Early Intervention Support	<u>Elementary</u>	<u>Secondary</u>	<u>Federal</u>	<u>Total</u>
300 <u>Purchased Professional and Technical Services</u>				
322 Professional Educational Services – lus	42,602.62			42,602.62
Total Purchased Professional and Technical Services	\$42,602.62			\$42,602.62
Total 1280 Early Intervention Support	\$42,602.62			\$42,602.62

LEA : 124157802 Tredyffrin-Easttown SD

Printed 11/28/2023 1:35:29 PM

General Fund (10)

1290 Special Programs - Other Support	<u>Elementary</u>	<u>Secondary</u>	<u>Federal</u>	<u>Total</u>
300 <u>Purchased Professional and Technical Services</u>				
322 Professional Educational Services – Ius	3,085,917.93	3,085,917.94	1,541,557.77	7,713,393.64
Total Purchased Professional and Technical Services	\$3,085,917.93	\$3,085,917.94	\$1,541,557.77	\$7,713,393.64
500 <u>Other Purchased Services</u>				
567 Tuition To Approved Private Schools (APS) and PA Chartered Schools for the Deaf and Blind	202,810.94	202,810.95		405,621.89
594 IU Payment By Withholding for Institutionalized Children's Programs – Special Classes			833.41	833.41
Total Other Purchased Services	\$202,810.94	\$202,810.95	\$833.41	\$406,455.30
Total 1290 Special Programs - Other Support	\$3,288,728.87	\$3,288,728.89	\$1,542,391.18	\$8,119,848.94

LEA : 124157802 Tredyffrin-Easttown SD

Printed 11/28/2023 1:35:29 PM

General Fund (10)

1300 Vocational Education

500 Other Purchased Services

	<u>Elementary</u>	<u>Secondary</u>	<u>Federal</u>	<u>Total</u>
564 Tuition To Career and Technology Centers		782,696.00		782,696.00
Total Other Purchased Services		\$782,696.00		\$782,696.00
Total 1300 Vocational Education		\$782,696.00		\$782,696.00

LEA : 124157802 Tredyffrin-Easttown SD

Printed 11/28/2023 1:35:29 PM

General Fund (10)

1400 Other Instructional Programs – Elementary / Secondary	<u>Elementary</u>	<u>Secondary</u>	<u>Federal</u>	<u>Total</u>
100 <u>Personnel Services – Salaries</u>				
100 Personnel Services – Salaries	37,857.50	73,656.61		111,514.11
Total Personnel Services – Salaries	\$37,857.50	\$73,656.61		\$111,514.11
200 <u>Personnel Services – Employee Benefits</u>				
220 Social Security Contributions	2,895.34	5,508.01		8,403.35
230 PSERS Retirement Contributions	13,351.01	25,973.84		39,324.85
250 Unemployment Compensation		18.09		18.09
270 Group Insurance – Self-Insurance		11,968.82		11,968.82
Total Personnel Services – Employee Benefits	\$16,246.35	\$43,468.76		\$59,715.11
600 <u>Supplies</u>				
610 General Supplies	244.07	244.08		488.15
640 Books and Periodicals	114.26	114.27		228.53
Total Supplies	\$358.33	\$358.35		\$716.68
Total 1400 Other Instructional Programs – Elementary / Secondary	\$54,462.18	\$117,483.72		\$171,945.90

LEA : 124157802 Tredyffrin-Easttown SD

Printed 11/28/2023 1:35:29 PM

General Fund (10)

1410 Drivers' Education

	<u>Elementary</u>	<u>Secondary</u>	<u>Federal</u>	<u>Total</u>
100 <u>Personnel Services – Salaries</u>				
100 Personnel Services – Salaries		35,799.11		35,799.11
Total Personnel Services – Salaries		\$35,799.11		\$35,799.11
200 <u>Personnel Services – Employee Benefits</u>				
220 Social Security Contributions		2,612.66		2,612.66
230 PSERS Retirement Contributions		12,622.82		12,622.82
250 Unemployment Compensation		18.09		18.09
270 Group Insurance – Self-Insurance		11,968.82		11,968.82
Total Personnel Services – Employee Benefits		\$27,222.39		\$27,222.39
Total 1410 Drivers' Education		\$63,021.50		\$63,021.50

LEA : 124157802 Tredyffrin-Easttown SD

Printed 11/28/2023 1:35:29 PM

General Fund (10)

1420 Summer School	<u>Elementary</u>	<u>Secondary</u>	<u>Federal</u>	<u>Total</u>
100 <u>Personnel Services – Salaries</u>				
100 Personnel Services – Salaries	12,450.00	12,450.00		24,900.00
Total Personnel Services – Salaries	\$12,450.00	\$12,450.00		\$24,900.00
200 <u>Personnel Services – Employee Benefits</u>				
220 Social Security Contributions	956.32	956.32		1,912.64
230 PSERS Retirement Contributions	4,389.86	4,389.86		8,779.72
Total Personnel Services – Employee Benefits	\$5,346.18	\$5,346.18		\$10,692.36
600 <u>Supplies</u>				
610 General Supplies	244.07	244.08		488.15
640 Books and Periodicals	114.26	114.27		228.53
Total Supplies	\$358.33	\$358.35		\$716.68
Total 1420 Summer School	\$18,154.51	\$18,154.53		\$36,309.04

LEA : 124157802 Tredyffrin-Easttown SD

Printed 11/28/2023 1:35:29 PM

General Fund (10)

1430 Homebound Instruction	<u>Elementary</u>	<u>Secondary</u>	<u>Federal</u>	<u>Total</u>
100 <u>Personnel Services – Salaries</u>				
100 Personnel Services – Salaries	25,407.50	25,407.50		50,815.00
Total Personnel Services – Salaries	\$25,407.50	\$25,407.50		\$50,815.00
200 <u>Personnel Services – Employee Benefits</u>				
220 Social Security Contributions	1,939.02	1,939.03		3,878.05
230 PSERS Retirement Contributions	8,961.15	8,961.16		17,922.31
Total Personnel Services – Employee Benefits	\$10,900.17	\$10,900.19		\$21,800.36
Total 1430 Homebound Instruction	\$36,307.67	\$36,307.69		\$72,615.36

LEA : 124157802 Tredyffrin-Easttown SD

Printed 11/28/2023 1:35:34 PM

General Fund (10)

2000 Support Services

Total

100	<u>Personnel Services – Salaries</u>	
100	Personnel Services – Salaries	20,342,677.48
Total Personnel Services – Salaries		\$20,342,677.48
200	<u>Personnel Services – Employee Benefits</u>	
220	Social Security Contributions	1,460,626.24
230	PSERS Retirement Contributions	6,779,359.56
250	Unemployment Compensation	1,031.42
260	Workers' Compensation	538,158.86
270	Group Insurance – Self-Insurance	2,515,532.01
299	All Other Employee Benefits	365,580.44
Total Personnel Services – Employee Benefits		\$11,660,288.53
300	<u>Purchased Professional and Technical Services</u>	
310	Official / Administrative Services	14,239.68
323	Professional Educational Services – Other Educational Agencies	443.24
329	Professional Educational Services – Other	1,072,526.34
330	Other Professional Services	900,628.73
340	Technical Services	384,115.10
350	Security / Safety Services	13,504.00
Total Purchased Professional and Technical Services		\$2,385,457.09
400	<u>Purchased Property Services</u>	
420	Utility Services	1,178,236.77
430	Repairs and Maintenance Services	2,026,368.00
440	Rentals	208,477.82
490	Other Purchased Property Services	159,602.47
Total Purchased Property Services		\$3,572,685.06
500	<u>Other Purchased Services</u>	
513	Contracted Carriers	5,882,642.27
516	Student Transportation Services From the IU	21,100.20
520	Insurance – General	412,943.29
529	Other Insurance	163,871.00
530	Communications	202,631.95
549	Other Advertising/Public Relations	9,747.64
550	Printing and Binding	26,354.15
580	Travel	41,898.20
595	IU Payments By Withholding	72,476.68
Total Other Purchased Services		\$6,833,665.38
600	<u>Supplies</u>	
610	General Supplies	1,207,259.94
620	Energy	986,924.70
630	Food	5,429.89
640	Books and Periodicals	74,058.54
650	Supplies & Fees – Technology Related	1,168,037.58
Total Supplies		\$3,441,710.65

LEA : 124157802 Tredyffrin-Easttown SD

Printed 11/28/2023 1:35:34 PM

General Fund (10)

2000 Support Services

Total

700 Property

756 Capitalized Technology Equipment – Original	75,901.85
762 Capitalized Equipment - Replacement	114,721.20
766 Capitalized Technology Equipment – Replacement	50,446.00

Total Property	\$241,069.05
----------------	--------------

800 Other Objects

810 Dues and Fees	58,002.45
-------------------	-----------

Total Other Objects	\$58,002.45
---------------------	-------------

Total 2000 Support Services	\$48,535,555.69
-----------------------------	-----------------

LEA : 124157802 Tredyffrin-Easttown SD

Printed 11/28/2023 1:35:34 PM

General Fund (10)

2100 Support Services – Students

	Elementary	Secondary	Federal	Total
100 <u>Personnel Services – Salaries</u>				
100 Personnel Services – Salaries	1,599,920.61	2,377,828.82		4,009,980.71
Total Personnel Services – Salaries	\$1,599,920.61	\$2,377,828.82		\$4,009,980.71
200 <u>Personnel Services – Employee Benefits</u>				
220 Social Security Contributions	117,545.00	175,095.43		295,066.27
230 PSERS Retirement Contributions	546,976.19	818,498.53		1,376,839.48
250 Unemployment Compensation	144.76	180.95		325.71
260 Workers' Compensation	179,651.14	337,055.82		516,706.96
270 Group Insurance – Self-Insurance	23,348.55	44,699.67		75,900.65
299 All Other Employee Benefits	4,607.27	8,586.39		13,193.66
Total Personnel Services – Employee Benefits	\$872,272.91	\$1,384,116.79		\$2,278,032.73
300 <u>Purchased Professional and Technical Services</u>				
340 Technical Services	5,239.07	5,239.07		10,478.14
Total Purchased Professional and Technical Services	\$5,239.07	\$5,239.07		\$10,478.14
400 <u>Purchased Property Services</u>				
430 Repairs and Maintenance Services		2,160.00		2,160.00
Total Purchased Property Services		\$2,160.00		\$2,160.00
500 <u>Other Purchased Services</u>				
550 Printing and Binding	2,600.61	2,600.61		5,201.22
580 Travel	2,847.01	2,847.01		5,694.02
Total Other Purchased Services	\$5,447.62	\$5,447.62		\$10,895.24
600 <u>Supplies</u>				
610 General Supplies	7,490.67	22,328.06		29,818.73
640 Books and Periodicals	481.43	795.92		1,277.35
650 Supplies & Fees – Technology Related	487.50	10,434.13		10,921.63
Total Supplies	\$8,459.60	\$33,558.11		\$42,017.71
800 <u>Other Objects</u>				
810 Dues and Fees		910.00		910.00
Total Other Objects		\$910.00		\$910.00
Total 2100 Support Services – Students	\$2,491,339.81	\$3,809,260.41		\$6,354,474.53

LEA : 124157802 Tredyffrin-Easttown SD

Printed 11/28/2023 1:35:34 PM

General Fund (10)

2110 Supervision of Student Services	Elementary	Secondary	Federal	Total
100 <u>Personnel Services – Salaries</u>				
100 Personnel Services – Salaries	367,322.69	417,281.92		784,604.61
Total Personnel Services – Salaries	\$367,322.69	\$417,281.92		\$784,604.61
200 <u>Personnel Services – Employee Benefits</u>				
220 Social Security Contributions	25,636.40	29,349.19		54,985.59
230 PSERS Retirement Contributions	115,699.08	133,309.27		249,008.35
250 Unemployment Compensation	144.76	180.95		325.71
260 Workers' Compensation	4,503.59	4,959.13		9,462.72
270 Group Insurance – Self-Insurance	23,348.55	44,699.67		68,048.22
299 All Other Employee Benefits	412.50	412.50		825.00
Total Personnel Services – Employee Benefits	\$169,744.88	\$212,910.71		\$382,655.59
300 <u>Purchased Professional and Technical Services</u>				
340 Technical Services	5,239.07	5,239.07		10,478.14
Total Purchased Professional and Technical Services	\$5,239.07	\$5,239.07		\$10,478.14
500 <u>Other Purchased Services</u>				
550 Printing and Binding	2,600.61	2,600.61		5,201.22
580 Travel	2,679.51	2,679.51		5,359.02
Total Other Purchased Services	\$5,280.12	\$5,280.12		\$10,560.24
600 <u>Supplies</u>				
610 General Supplies	2,534.92	2,534.93		5,069.85
650 Supplies & Fees – Technology Related	487.50	487.50		975.00
Total Supplies	\$3,022.42	\$3,022.43		\$6,044.85
Total 2110 Supervision of Student Services	\$550,609.18	\$643,734.25		\$1,194,343.43

LEA : 124157802 Tredyffrin-Easttown SD

Printed 11/28/2023 1:35:34 PM

General Fund (10)

2111 Supervision of Student Services – Head of Component	Elementary	Secondary	Federal	Total
100 Personnel Services – Salaries				
100 Personnel Services – Salaries	367,322.69	417,281.92		784,604.61
Total Personnel Services – Salaries	\$367,322.69	\$417,281.92		\$784,604.61
200 Personnel Services – Employee Benefits				
220 Social Security Contributions	25,636.40	29,349.19		54,985.59
230 PSERS Retirement Contributions	115,699.08	133,309.27		249,008.35
250 Unemployment Compensation	144.76	180.95		325.71
260 Workers' Compensation	4,503.59	4,959.13		9,462.72
270 Group Insurance – Self-Insurance	23,348.55	44,699.67		68,048.22
299 All Other Employee Benefits	412.50	412.50		825.00
Total Personnel Services – Employee Benefits	\$169,744.88	\$212,910.71		\$382,655.59
300 Purchased Professional and Technical Services				
340 Technical Services	5,239.07	5,239.07		10,478.14
Total Purchased Professional and Technical Services	\$5,239.07	\$5,239.07		\$10,478.14
500 Other Purchased Services				
550 Printing and Binding	2,600.61	2,600.61		5,201.22
580 Travel	2,679.51	2,679.51		5,359.02
Total Other Purchased Services	\$5,280.12	\$5,280.12		\$10,560.24
600 Supplies				
610 General Supplies	2,534.92	2,534.93		5,069.85
650 Supplies & Fees – Technology Related	487.50	487.50		975.00
Total Supplies	\$3,022.42	\$3,022.43		\$6,044.85
Total 2111 Supervision of Student Services – Head of Component	\$550,609.18	\$643,734.25		\$1,194,343.43

LEA : 124157802 Tredyffrin-Easttown SD

Printed 11/28/2023 1:35:34 PM

General Fund (10)

2120 Guidance Services	Elementary	Secondary	Federal	Total
100 <u>Personnel Services – Salaries</u>				
100 Personnel Services – Salaries	1,230,810.76	1,960,546.90		3,191,357.66
Total Personnel Services – Salaries	\$1,230,810.76	\$1,960,546.90		\$3,191,357.66
200 <u>Personnel Services – Employee Benefits</u>				
220 Social Security Contributions	91,771.88	145,746.24		237,518.12
230 PSERS Retirement Contributions	430,646.96	685,189.26		1,115,836.22
260 Workers' Compensation	175,147.55	332,096.69		507,244.24
299 All Other Employee Benefits	4,194.77	8,173.89		12,368.66
Total Personnel Services – Employee Benefits	\$701,761.16	\$1,171,206.08		\$1,872,967.24
400 <u>Purchased Property Services</u>				
430 Repairs and Maintenance Services		2,160.00		2,160.00
Total Purchased Property Services		\$2,160.00		\$2,160.00
600 <u>Supplies</u>				
610 General Supplies	829.62	15,667.00		16,496.62
640 Books and Periodicals	481.43	795.92		1,277.35
650 Supplies & Fees – Technology Related		9,946.63		9,946.63
Total Supplies	\$1,311.05	\$26,409.55		\$27,720.60
800 <u>Other Objects</u>				
810 Dues and Fees		910.00		910.00
Total Other Objects		\$910.00		\$910.00
Total 2120 Guidance Services	\$1,933,882.97	\$3,161,232.53		\$5,095,115.50

LEA : 124157802 Tredyffrin-Easttown SD

Printed 11/28/2023 1:35:34 PM

General Fund (10)

2140 Psychological Services	<u>Elementary</u>	<u>Secondary</u>	<u>Federal</u>	<u>Total</u>
100 <u>Personnel Services – Salaries</u>				
100 Personnel Services – Salaries	1,787.16			1,787.16
Total Personnel Services – Salaries	\$1,787.16			\$1,787.16
200 <u>Personnel Services – Employee Benefits</u>				
220 Social Security Contributions	136.72			136.72
230 PSERS Retirement Contributions	630.15			630.15
Total Personnel Services – Employee Benefits	\$766.87			\$766.87
Total 2140 Psychological Services	\$2,554.03			\$2,554.03

LEA : 124157802 Tredyffrin-Easttown SD

Printed 11/28/2023 1:35:34 PM

General Fund (10)

2150 Speech Pathology and Audiology Services

	<u>Elementary</u>	<u>Secondary</u>	<u>Federal</u>	<u>Total</u>
500 <u>Other Purchased Services</u>				
580 Travel	167.50	167.50		335.00
Total Other Purchased Services	\$167.50	\$167.50		\$335.00
600 <u>Supplies</u>				
610 General Supplies	4,126.13	4,126.13		8,252.26
Total Supplies	\$4,126.13	\$4,126.13		\$8,252.26
Total 2150 Speech Pathology and Audiology Services	\$4,293.63	\$4,293.63		\$8,587.26

LEA : 124157802 Tredyffrin-Easttown SD

Printed 11/28/2023 1:35:34 PM

General Fund (10)

2170 Student Accounting Services	<u>Elementary</u>	<u>Secondary</u>	<u>Federal</u>	<u>Total</u>
100 <u>Personnel Services – Salaries</u>				
100 Personnel Services – Salaries				32,231.28
Total Personnel Services – Salaries				\$32,231.28
200 <u>Personnel Services – Employee Benefits</u>				
220 Social Security Contributions				2,425.84
230 PSERS Retirement Contributions				11,364.76
270 Group Insurance – Self-Insurance				7,852.43
Total Personnel Services – Employee Benefits				\$21,643.03
Total 2170 Student Accounting Services				\$53,874.31

LEA : 124157802 Tredyffrin-Easttown SD

Printed 11/28/2023 1:35:34 PM

General Fund (10)

2200 Support Services – Instructional Staff	Elementary	Secondary	Federal	Total
100 <u>Personnel Services – Salaries</u>				
100 Personnel Services – Salaries	1,410,235.00	1,119,086.10		2,529,321.10
Total Personnel Services – Salaries	\$1,410,235.00	\$1,119,086.10		\$2,529,321.10
200 <u>Personnel Services – Employee Benefits</u>				
220 Social Security Contributions	98,557.97	76,831.06		175,389.03
230 PSERS Retirement Contributions	472,058.66	373,529.77		845,588.43
270 Group Insurance – Self-Insurance	132,366.45	83,787.15		216,153.60
299 All Other Employee Benefits	135,590.14	134,199.91		269,790.05
Total Personnel Services – Employee Benefits	\$838,573.22	\$668,347.89		\$1,506,921.11
300 <u>Purchased Professional and Technical Services</u>				
310 Official / Administrative Services	7,119.84	7,119.84		14,239.68
329 Professional Educational Services – Other	19,256.30	19,256.30	408.08	38,920.68
340 Technical Services	750.00	750.00		1,500.00
Total Purchased Professional and Technical Services	\$27,126.14	\$27,126.14	\$408.08	\$54,660.36
400 <u>Purchased Property Services</u>				
430 Repairs and Maintenance Services	1,804.69	362.00		2,166.69
Total Purchased Property Services	\$1,804.69	\$362.00		\$2,166.69
500 <u>Other Purchased Services</u>				
550 Printing and Binding	4,246.87	4,246.88		8,493.75
580 Travel	2,178.32	2,178.33		4,356.65
Total Other Purchased Services	\$6,425.19	\$6,425.21		\$12,850.40
600 <u>Supplies</u>				
610 General Supplies	19,717.12	21,014.34		40,731.46
640 Books and Periodicals	42,855.20	22,311.01		65,166.21
650 Supplies & Fees – Technology Related	21,541.22	119,886.87		141,428.09
Total Supplies	\$84,113.54	\$163,212.22		\$247,325.76
700 <u>Property</u>				
756 Capitalized Technology Equipment – Original		27,613.00		27,613.00
Total Property		\$27,613.00		\$27,613.00
800 <u>Other Objects</u>				
810 Dues and Fees	2,583.10	2,583.10		5,166.20
Total Other Objects	\$2,583.10	\$2,583.10		\$5,166.20
Total 2200 Support Services – Instructional Staff	\$2,370,860.88	\$2,014,755.66	\$408.08	\$4,386,024.62

LEA : 124157802 Tredyffrin-Easttown SD

Printed 11/28/2023 1:35:34 PM

General Fund (10)

2210 Supervision of Educational Media Services	<u>Elementary</u>	<u>Secondary</u>	<u>Federal</u>	<u>Total</u>
600 <u>Supplies</u>				
610 General Supplies	5,000.00			5,000.00
Total Supplies	\$5,000.00			\$5,000.00
Total 2210 Supervision of Educational Media Services	\$5,000.00			\$5,000.00

LEA : 124157802 Tredyffrin-Easttown SD

Printed 11/28/2023 1:35:34 PM

General Fund (10)

2211 Supervision of Educational Media Services – Head of Component	<u>Elementary</u>	<u>Secondary</u>	<u>Federal</u>	<u>Total</u>
600 <u>Supplies</u>				
610 General Supplies	5,000.00			5,000.00
Total Supplies	\$5,000.00			\$5,000.00
Total 2211 Supervision of Educational Media Services – Head of Component	\$5,000.00			\$5,000.00

LEA : 124157802 Tredyffrin-Easttown SD

Printed 11/28/2023 1:35:34 PM

General Fund (10)

2230 Educational Television Services	<u>Elementary</u>	<u>Secondary</u>	<u>Federal</u>	<u>Total</u>
100 <u>Personnel Services – Salaries</u>				
100 Personnel Services – Salaries		15,939.10		15,939.10
Total Personnel Services – Salaries		\$15,939.10		\$15,939.10
200 <u>Personnel Services – Employee Benefits</u>				
220 Social Security Contributions		1,220.09		1,220.09
230 PSERS Retirement Contributions		5,620.13		5,620.13
270 Group Insurance – Self-Insurance		(166.94)		(166.94)
Total Personnel Services – Employee Benefits		\$6,673.28		\$6,673.28
600 <u>Supplies</u>				
610 General Supplies		3,609.15		3,609.15
650 Supplies & Fees – Technology Related		27,629.49		27,629.49
Total Supplies		\$31,238.64		\$31,238.64
700 <u>Property</u>				
756 Capitalized Technology Equipment – Original		27,613.00		27,613.00
Total Property		\$27,613.00		\$27,613.00
Total 2230 Educational Television Services		\$81,464.02		\$81,464.02

LEA : 124157802 Tredyffrin-Easttown SD

Printed 11/28/2023 1:35:34 PM

General Fund (10)

2250 School Library Services	Elementary	Secondary	Federal	Total
100 <u>Personnel Services – Salaries</u>				
100 Personnel Services – Salaries	636,531.46	329,443.45		965,974.91
Total Personnel Services – Salaries	\$636,531.46	\$329,443.45		\$965,974.91
200 <u>Personnel Services – Employee Benefits</u>				
220 Social Security Contributions	47,515.17	24,568.16		72,083.33
230 PSERS Retirement Contributions	220,310.74	116,161.71		336,472.45
270 Group Insurance – Self-Insurance	104,013.34	55,600.95		159,614.29
299 All Other Employee Benefits	4,663.70	3,273.47		7,937.17
Total Personnel Services – Employee Benefits	\$376,502.95	\$199,604.29		\$576,107.24
400 <u>Purchased Property Services</u>				
430 Repairs and Maintenance Services	1,804.69	362.00		2,166.69
Total Purchased Property Services	\$1,804.69	\$362.00		\$2,166.69
600 <u>Supplies</u>				
610 General Supplies	6,550.57	9,238.64		15,789.21
640 Books and Periodicals	41,906.15	21,361.96		63,268.11
650 Supplies & Fees – Technology Related	10,922.22	81,638.38		92,560.60
Total Supplies	\$59,378.94	\$112,238.98		\$171,617.92
Total 2250 School Library Services	\$1,074,218.04	\$641,648.72		\$1,715,866.76

LEA : 124157802 Tredyffrin-Easttown SD

Printed 11/28/2023 1:35:34 PM

General Fund (10)

2260 Instruction and Curriculum Development Services

	<u>Elementary</u>	<u>Secondary</u>	<u>Federal</u>	<u>Total</u>
100 <u>Personnel Services – Salaries</u>				
100 Personnel Services – Salaries	472,638.47	472,638.48		945,276.95
Total Personnel Services – Salaries	\$472,638.47	\$472,638.48		\$945,276.95
200 <u>Personnel Services – Employee Benefits</u>				
220 Social Security Contributions	31,679.07	31,679.09		63,358.16
230 PSERS Retirement Contributions	154,868.49	154,868.50		309,736.99
270 Group Insurance – Self-Insurance	15,827.03	15,827.04		31,654.07
299 All Other Employee Benefits	4,161.50	4,161.50		8,323.00
Total Personnel Services – Employee Benefits	\$206,536.09	\$206,536.13		\$413,072.22
500 <u>Other Purchased Services</u>				
550 Printing and Binding	3,750.50	3,750.50		7,501.00
580 Travel	422.81	422.81		845.62
Total Other Purchased Services	\$4,173.31	\$4,173.31		\$8,346.62
600 <u>Supplies</u>				
610 General Supplies	1,657.27	1,657.27		3,314.54
Total Supplies	\$1,657.27	\$1,657.27		\$3,314.54
800 <u>Other Objects</u>				
810 Dues and Fees	529.75	529.75		1,059.50
Total Other Objects	\$529.75	\$529.75		\$1,059.50
Total 2260 Instruction and Curriculum Development Services	\$685,534.89	\$685,534.94		\$1,371,069.83

LEA : 124157802 Tredyffrin-Easttown SD

Printed 11/28/2023 1:35:34 PM

General Fund (10)

2270 Instructional Staff Professional Development Services	Elementary	Secondary	Federal	Total
100 <u>Personnel Services – Salaries</u>				
100 Personnel Services – Salaries	301,065.07	301,065.07		602,130.14
Total Personnel Services – Salaries	\$301,065.07	\$301,065.07		\$602,130.14
200 <u>Personnel Services – Employee Benefits</u>				
220 Social Security Contributions	19,363.73	19,363.72		38,727.45
230 PSERS Retirement Contributions	96,879.43	96,879.43		193,758.86
270 Group Insurance – Self-Insurance	12,526.08	12,526.10		25,052.18
299 All Other Employee Benefits	126,764.94	126,764.94		253,529.88
Total Personnel Services – Employee Benefits	\$255,534.18	\$255,534.19		\$511,068.37
300 <u>Purchased Professional and Technical Services</u>				
310 Official / Administrative Services	7,119.84	7,119.84		14,239.68
329 Professional Educational Services – Other	5,542.19	5,542.19		11,084.38
Total Purchased Professional and Technical Services	\$12,662.03	\$12,662.03		\$25,324.06
500 <u>Other Purchased Services</u>				
550 Printing and Binding	496.37	496.38		992.75
580 Travel	1,597.39	1,597.39		3,194.78
Total Other Purchased Services	\$2,093.76	\$2,093.77		\$4,187.53
600 <u>Supplies</u>				
610 General Supplies	3,111.81	3,111.81		6,223.62
640 Books and Periodicals	949.05	949.05		1,898.10
Total Supplies	\$4,060.86	\$4,060.86		\$8,121.72
800 <u>Other Objects</u>				
810 Dues and Fees	2,053.35	2,053.35		4,106.70
Total Other Objects	\$2,053.35	\$2,053.35		\$4,106.70
Total 2270 Instructional Staff Professional Development Services	\$577,469.25	\$577,469.27		\$1,154,938.52

LEA : 124157802 Tredyffrin-Easttown SD

Printed 11/28/2023 1:35:34 PM

General Fund (10)

2280 Nonpublic Support Services

	<u>Elementary</u>	<u>Secondary</u>	<u>Federal</u>	<u>Total</u>
300 <u>Purchased Professional and Technical Services</u>				
329 Professional Educational Services – Other	13,714.11	13,714.11	408.08	27,836.30
Total Purchased Professional and Technical Services	\$13,714.11	\$13,714.11	\$408.08	\$27,836.30
Total 2280 Nonpublic Support Services	\$13,714.11	\$13,714.11	\$408.08	\$27,836.30

LEA : 124157802 Tredyffrin-Easttown SD

Printed 11/28/2023 1:35:34 PM

General Fund (10)

2290 Other Instructional Staff Services	<u>Elementary</u>	<u>Secondary</u>	<u>Federal</u>	<u>Total</u>
300 <u>Purchased Professional and Technical Services</u>				
340 Technical Services	750.00	750.00		1,500.00
Total Purchased Professional and Technical Services	\$750.00	\$750.00		\$1,500.00
500 <u>Other Purchased Services</u>				
580 Travel	158.12	158.13		316.25
Total Other Purchased Services	\$158.12	\$158.13		\$316.25
600 <u>Supplies</u>				
610 General Supplies	3,397.47	3,397.47		6,794.94
650 Supplies & Fees – Technology Related	10,619.00	10,619.00		21,238.00
Total Supplies	\$14,016.47	\$14,016.47		\$28,032.94
Total 2290 Other Instructional Staff Services	\$14,924.59	\$14,924.60		\$29,849.19

LEA : 124157802 Tredyffrin-Easttown SD

Printed 11/28/2023 1:35:34 PM

General Fund (10)

2300 Support Services – Administration	Elementary	Secondary	Federal	Total
100 Personnel Services – Salaries				
100 Personnel Services – Salaries	1,960,626.62	2,181,208.57		4,983,817.05
Total Personnel Services – Salaries	\$1,960,626.62	\$2,181,208.57		\$4,983,817.05
200 Personnel Services – Employee Benefits				
220 Social Security Contributions	131,376.96	153,709.78		333,941.14
230 PSERS Retirement Contributions	636,344.14	711,218.12		1,621,101.53
250 Unemployment Compensation				217.15
260 Workers' Compensation				6,967.64
270 Group Insurance – Self-Insurance	189,253.91	246,491.30		513,564.53
299 All Other Employee Benefits	1,650.00	4,125.00		5,775.00
Total Personnel Services – Employee Benefits	\$958,625.01	\$1,115,544.20		\$2,481,566.99
300 Purchased Professional and Technical Services				
329 Professional Educational Services – Other	32,319.80	34,119.81		66,439.61
330 Other Professional Services				837,319.70
340 Technical Services				99,673.52
350 Security / Safety Services				13,504.00
Total Purchased Professional and Technical Services	\$32,319.80	\$34,119.81		\$1,016,936.83
400 Purchased Property Services				
430 Repairs and Maintenance Services	6,443.28	6,506.01		12,949.29
440 Rentals	1,102.27	1,102.28		16,268.87
490 Other Purchased Property Services		22,870.21		22,870.21
Total Purchased Property Services	\$7,545.55	\$30,478.50		\$52,088.37
500 Other Purchased Services				
520 Insurance – General				412,943.29
530 Communications	463.90	463.91		7,709.13
549 Other Advertising/Public Relations				9,747.64
550 Printing and Binding	3,995.87	3,995.88		11,591.53
580 Travel	176.40	17,450.53		19,361.65
Total Other Purchased Services	\$4,636.17	\$21,910.32		\$461,353.24
600 Supplies				
610 General Supplies	24,454.74	27,644.48	4,250.19	62,357.90
630 Food				5,429.89
640 Books and Periodicals		3,734.04		4,068.32
650 Supplies & Fees – Technology Related	1,729.25	2,828.75		5,013.00
Total Supplies	\$26,183.99	\$34,207.27	\$4,250.19	\$76,869.11
700 Property				
762 Capitalized Equipment - Replacement	8,525.00	8,525.00		17,050.00
Total Property	\$8,525.00	\$8,525.00		\$17,050.00
800 Other Objects				
810 Dues and Fees	142.00	142.00		20,484.68
Total Other Objects	\$142.00	\$142.00		\$20,484.68
Total 2300 Support Services – Administration	\$2,998,604.14	\$3,426,135.67	\$4,250.19	\$9,110,166.27

LEA : 124157802 Tredyffrin-Easttown SD

Printed 11/28/2023 1:35:34 PM

General Fund (10)

2310 Board Services

Elementary Secondary Federal Total

300 <u>Purchased Professional and Technical Services</u>				
350 Security / Safety Services				13,504.00
Total Purchased Professional and Technical Services				\$13,504.00
500 <u>Other Purchased Services</u>				
520 Insurance – General				258,471.29
Total Other Purchased Services				\$258,471.29
600 <u>Supplies</u>				
630 Food				5,429.89
Total Supplies				\$5,429.89
800 <u>Other Objects</u>				
810 Dues and Fees				13,799.11
Total Other Objects				\$13,799.11
Total 2310 Board Services				\$291,204.29

LEA : 124157802 Tredyffrin-Easttown SD

Printed 11/28/2023 1:35:34 PM

General Fund (10)

2320 Board Treasurer Services	<u>Elementary</u>	<u>Secondary</u>	<u>Federal</u>	<u>Total</u>
500 <u>Other Purchased Services</u>				
520 Insurance – General				154,472.00
Total Other Purchased Services				\$154,472.00
Total 2320 Board Treasurer Services				\$154,472.00

LEA : 124157802 Tredyffrin-Easttown SD

Printed 11/28/2023 1:35:34 PM

General Fund (10)				
2330 Tax Assessment and Collection Services	<u>Elementary</u>	<u>Secondary</u>	<u>Federal</u>	<u>Total</u>
100 <u>Personnel Services – Salaries</u>				
100 Personnel Services – Salaries				58,598.66
Total Personnel Services – Salaries				\$58,598.66
200 <u>Personnel Services – Employee Benefits</u>				
220 Social Security Contributions				4,389.05
230 PSERS Retirement Contributions				20,661.88
270 Group Insurance – Self-Insurance				18,945.32
Total Personnel Services – Employee Benefits				\$43,996.25
300 <u>Purchased Professional and Technical Services</u>				
340 Technical Services				94,673.52
Total Purchased Professional and Technical Services				\$94,673.52
500 <u>Other Purchased Services</u>				
530 Communications				6,781.32
550 Printing and Binding				3,014.37
Total Other Purchased Services				\$9,795.69
600 <u>Supplies</u>				
610 General Supplies			4,250.19	4,250.19
Total Supplies			\$4,250.19	\$4,250.19
Total 2330 Tax Assessment and Collection Services			\$4,250.19	\$211,314.31

LEA : 124157802 Tredyffrin-Easttown SD

Printed 11/28/2023 1:35:34 PM

General Fund (10)

2340 Staff Relations and Negotiations Services

Elementary Secondary Federal Total

300 <u>Purchased Professional and Technical Services</u>				
330 Other Professional Services				68,080.00
Total Purchased Professional and Technical Services				\$68,080.00
400 <u>Purchased Property Services</u>				
440 Rentals				1,793.07
Total Purchased Property Services				\$1,793.07
500 <u>Other Purchased Services</u>				
549 Other Advertising/Public Relations				9,747.64
550 Printing and Binding				585.41
580 Travel				1,679.72
Total Other Purchased Services				\$12,012.77
600 <u>Supplies</u>				
610 General Supplies				2,912.29
650 Supplies & Fees – Technology Related				455.00
Total Supplies				\$3,367.29
800 <u>Other Objects</u>				
810 Dues and Fees				1,902.00
Total Other Objects				\$1,902.00
Total 2340 Staff Relations and Negotiations Services				\$87,155.13

LEA : 124157802 Tredyffrin-Easttown SD

Printed 11/28/2023 1:35:34 PM

General Fund (10)

2350 Legal and Accounting Services	<u>Elementary</u>	<u>Secondary</u>	<u>Federal</u>	<u>Total</u>
300 <u>Purchased Professional and Technical Services</u>				
330 Other Professional Services				766,604.59
Total Purchased Professional and Technical Services				\$766,604.59
Total 2350 Legal and Accounting Services				\$766,604.59

LEA : 124157802 Tredyffrin-Easttown SD

Printed 11/28/2023 1:35:34 PM

General Fund (10)

2360 Office of the Superintendent / Executive Director Services	<u>Elementary</u>	<u>Secondary</u>	<u>Federal</u>	<u>Total</u>
100 <u>Personnel Services – Salaries</u>				
100 Personnel Services – Salaries				639,163.20
Total Personnel Services – Salaries				\$639,163.20
200 <u>Personnel Services – Employee Benefits</u>				
220 Social Security Contributions				33,840.20
230 PSERS Retirement Contributions				202,531.03
270 Group Insurance – Self-Insurance				39,249.40
Total Personnel Services – Employee Benefits				\$275,620.63
400 <u>Purchased Property Services</u>				
440 Rentals				12,271.25
Total Purchased Property Services				\$12,271.25
500 <u>Other Purchased Services</u>				
530 Communications	25.00	25.00		50.00
580 Travel				55.00
Total Other Purchased Services	\$25.00	\$25.00		\$105.00
600 <u>Supplies</u>				
610 General Supplies				2,583.04
640 Books and Periodicals				334.28
Total Supplies				\$2,917.32
800 <u>Other Objects</u>				
810 Dues and Fees				4,019.57
Total Other Objects				\$4,019.57
Total 2360 Office of the Superintendent / Executive Director Services	\$25.00	\$25.00		\$934,096.97

LEA : 124157802 Tredyffrin-Easttown SD

Printed 11/28/2023 1:35:34 PM

General Fund (10)

2370 Community Relations Services	<u>Elementary</u>	<u>Secondary</u>	<u>Federal</u>	<u>Total</u>
100 <u>Personnel Services – Salaries</u>				
100 Personnel Services – Salaries				144,220.00
Total Personnel Services – Salaries				\$144,220.00
200 <u>Personnel Services – Employee Benefits</u>				
220 Social Security Contributions				10,625.15
230 PSERS Retirement Contributions				50,346.36
250 Unemployment Compensation				217.15
260 Workers' Compensation				6,967.64
270 Group Insurance – Self-Insurance				19,624.60
Total Personnel Services – Employee Benefits				\$87,780.90
300 <u>Purchased Professional and Technical Services</u>				
330 Other Professional Services				2,635.11
Total Purchased Professional and Technical Services				\$2,635.11
800 <u>Other Objects</u>				
810 Dues and Fees				480.00
Total Other Objects				\$480.00
Total 2370 Community Relations Services				\$235,116.01

LEA : 124157802 Tredyffrin-Easttown SD

Printed 11/28/2023 1:35:34 PM

General Fund (10)

2380 Office of the Principal Services	Elementary	Secondary	Federal	Total
100 <u>Personnel Services – Salaries</u>				
100 Personnel Services – Salaries	1,960,626.62	2,181,208.57		4,141,835.19
Total Personnel Services – Salaries	\$1,960,626.62	\$2,181,208.57		\$4,141,835.19
200 <u>Personnel Services – Employee Benefits</u>				
220 Social Security Contributions	131,376.96	153,709.78		285,086.74
230 PSERS Retirement Contributions	636,344.14	711,218.12		1,347,562.26
270 Group Insurance – Self-Insurance	189,253.91	246,491.30		435,745.21
299 All Other Employee Benefits	1,650.00	4,125.00		5,775.00
Total Personnel Services – Employee Benefits	\$958,625.01	\$1,115,544.20		\$2,074,169.21
300 <u>Purchased Professional and Technical Services</u>				
329 Professional Educational Services – Other	32,319.80	34,119.81		66,439.61
Total Purchased Professional and Technical Services	\$32,319.80	\$34,119.81		\$66,439.61
400 <u>Purchased Property Services</u>				
430 Repairs and Maintenance Services	6,443.28	6,506.01		12,949.29
440 Rentals	1,102.27	1,102.28		2,204.55
490 Other Purchased Property Services		22,870.21		22,870.21
Total Purchased Property Services	\$7,545.55	\$30,478.50		\$38,024.05
500 <u>Other Purchased Services</u>				
530 Communications	438.90	438.91		877.81
550 Printing and Binding	3,995.87	3,995.88		7,991.75
580 Travel	176.40	17,450.53		17,626.93
Total Other Purchased Services	\$4,611.17	\$21,885.32		\$26,496.49
600 <u>Supplies</u>				
610 General Supplies	24,454.74	27,644.48		52,099.22
640 Books and Periodicals		3,734.04		3,734.04
650 Supplies & Fees – Technology Related	1,729.25	2,828.75		4,558.00
Total Supplies	\$26,183.99	\$34,207.27		\$60,391.26
700 <u>Property</u>				
762 Capitalized Equipment - Replacement	8,525.00	8,525.00		17,050.00
Total Property	\$8,525.00	\$8,525.00		\$17,050.00
800 <u>Other Objects</u>				
810 Dues and Fees	142.00	142.00		284.00
Total Other Objects	\$142.00	\$142.00		\$284.00
Total 2380 Office of the Principal Services	\$2,998,579.14	\$3,426,110.67		\$6,424,689.81

LEA : 124157802 Tredyffrin-Easttown SD

Printed 11/28/2023 1:35:34 PM

General Fund (10)

2390 Other Administration Services	<u>Elementary</u>	<u>Secondary</u>	<u>Federal</u>	<u>Total</u>
300 <u>Purchased Professional and Technical Services</u>				
340 Technical Services				5,000.00
Total Purchased Professional and Technical Services				\$5,000.00
600 <u>Supplies</u>				
610 General Supplies				513.16
Total Supplies				\$513.16
Total 2390 Other Administration Services				\$5,513.16

LEA : 124157802 Tredyffrin-Easttown SD

Printed 11/28/2023 1:35:34 PM

General Fund (10)

2400 Support Services – Pupil Health	<u>Elementary</u>	<u>Secondary</u>	<u>Federal</u>	<u>Total</u>
100 <u>Personnel Services – Salaries</u>				
100 Personnel Services – Salaries				910,612.37
Total Personnel Services – Salaries				\$910,612.37
200 <u>Personnel Services – Employee Benefits</u>				
220 Social Security Contributions				65,282.63
230 PSERS Retirement Contributions				314,663.46
250 Unemployment Compensation				36.19
260 Workers' Compensation				1,170.18
270 Group Insurance – Self-Insurance				165,405.06
299 All Other Employee Benefits				6,600.00
Total Personnel Services – Employee Benefits				\$553,157.52
300 <u>Purchased Professional and Technical Services</u>				
329 Professional Educational Services – Other				667,823.35
Total Purchased Professional and Technical Services				\$667,823.35
400 <u>Purchased Property Services</u>				
430 Repairs and Maintenance Services				874.95
Total Purchased Property Services				\$874.95
500 <u>Other Purchased Services</u>				
580 Travel				1,352.50
Total Other Purchased Services				\$1,352.50
600 <u>Supplies</u>				
610 General Supplies				28,789.60
650 Supplies & Fees – Technology Related				12,985.30
Total Supplies				\$41,774.90
Total 2400 Support Services – Pupil Health				\$2,175,595.59

LEA : 124157802 Tredyffrin-Easttown SD

Printed 11/28/2023 1:35:34 PM

General Fund (10)

2410 Supervision of Health Services	<u>Elementary</u>	<u>Secondary</u>	<u>Federal</u>	<u>Total</u>
100 <u>Personnel Services – Salaries</u>				
100 Personnel Services – Salaries				910,612.37
Total Personnel Services – Salaries				\$910,612.37
200 <u>Personnel Services – Employee Benefits</u>				
220 Social Security Contributions				65,282.63
230 PSERS Retirement Contributions				314,663.46
250 Unemployment Compensation				36.19
260 Workers' Compensation				1,170.18
270 Group Insurance – Self-Insurance				165,405.06
299 All Other Employee Benefits				6,600.00
Total Personnel Services – Employee Benefits				\$553,157.52
300 <u>Purchased Professional and Technical Services</u>				
329 Professional Educational Services – Other				149,504.19
Total Purchased Professional and Technical Services				\$149,504.19
Total 2410 Supervision of Health Services				\$1,613,274.08

LEA : 124157802 Tredyffrin-Easttown SD

Printed 11/28/2023 1:35:34 PM

General Fund (10)

2411 Supervision of Health Services – Head of Component	<u>Elementary</u>	<u>Secondary</u>	<u>Federal</u>	<u>Total</u>
100 <u>Personnel Services – Salaries</u>				
100 Personnel Services – Salaries				910,612.37
Total Personnel Services – Salaries				\$910,612.37
200 <u>Personnel Services – Employee Benefits</u>				
220 Social Security Contributions				65,282.63
230 PSERS Retirement Contributions				314,663.46
250 Unemployment Compensation				36.19
260 Workers' Compensation				1,170.18
270 Group Insurance – Self-Insurance				165,405.06
299 All Other Employee Benefits				6,600.00
Total Personnel Services – Employee Benefits				\$553,157.52
300 <u>Purchased Professional and Technical Services</u>				
329 Professional Educational Services – Other				149,504.19
Total Purchased Professional and Technical Services				\$149,504.19
Total 2411 Supervision of Health Services – Head of Component				\$1,613,274.08

LEA : 124157802 Tredyffrin-Easttown SD

Printed 11/28/2023 1:35:34 PM

General Fund (10)

2420 Medical Services

Elementary Secondary Federal Total

300 Purchased Professional and Technical Services

329 Professional Educational Services – Other 33,286.80

Total Purchased Professional and Technical Services \$33,286.80

Total 2420 Medical Services \$33,286.80

LEA : 124157802 Tredyffrin-Easttown SD

Printed 11/28/2023 1:35:34 PM

General Fund (10)

2430 Dental Services

<u>Elementary</u>	<u>Secondary</u>	<u>Federal</u>	<u>Total</u>
-------------------	------------------	----------------	--------------

300 Purchased Professional and Technical Services

329 Professional Educational Services – Other			600.00
---	--	--	--------

Total Purchased Professional and Technical Services			\$600.00
--	--	--	-----------------

Total 2430 Dental Services			\$600.00
-----------------------------------	--	--	-----------------

LEA : 124157802 Tredyffrin-Easttown SD

Printed 11/28/2023 1:35:34 PM

General Fund (10)

2440 Nursing Services

Elementary Secondary Federal Total

300	<u>Purchased Professional and Technical Services</u>				
329	Professional Educational Services – Other				484,432.36
Total Purchased Professional and Technical Services					\$484,432.36
400	<u>Purchased Property Services</u>				
430	Repairs and Maintenance Services				874.95
Total Purchased Property Services					\$874.95
500	<u>Other Purchased Services</u>				
580	Travel				1,352.50
Total Other Purchased Services					\$1,352.50
600	<u>Supplies</u>				
610	General Supplies				28,789.60
650	Supplies & Fees – Technology Related				12,985.30
Total Supplies					\$41,774.90
Total 2440 Nursing Services					\$528,434.71

LEA : 124157802 Tredyffrin-Easttown SD

Printed 11/28/2023 1:35:34 PM

General Fund (10)

2500 Support Services – Business	<u>Elementary</u>	<u>Secondary</u>	<u>Federal</u>	<u>Total</u>
100 <u>Personnel Services – Salaries</u>				
100 Personnel Services – Salaries				764,921.85
Total Personnel Services – Salaries				\$764,921.85
200 <u>Personnel Services – Employee Benefits</u>				
220 Social Security Contributions				56,620.53
230 PSERS Retirement Contributions				264,959.09
250 Unemployment Compensation				36.19
260 Workers' Compensation				1,459.74
270 Group Insurance – Self-Insurance				163,658.42
299 All Other Employee Benefits				34,696.87
Total Personnel Services – Employee Benefits				\$521,430.84
300 <u>Purchased Professional and Technical Services</u>				
330 Other Professional Services				38,809.23
Total Purchased Professional and Technical Services				\$38,809.23
500 <u>Other Purchased Services</u>				
550 Printing and Binding				1,067.65
580 Travel				5,090.58
Total Other Purchased Services				\$6,158.23
600 <u>Supplies</u>				
610 General Supplies				2,712.52
640 Books and Periodicals				2,557.80
650 Supplies & Fees – Technology Related				640.00
Total Supplies				\$5,910.32
800 <u>Other Objects</u>				
810 Dues and Fees				27,718.87
Total Other Objects				\$27,718.87
Total 2500 Support Services – Business				\$1,364,949.34

LEA : 124157802 Tredyffrin-Easttown SD

Printed 11/28/2023 1:35:34 PM

General Fund (10)				
2510 Fiscal Services				
	<u>Elementary</u>	<u>Secondary</u>	<u>Federal</u>	<u>Total</u>
100 <u>Personnel Services – Salaries</u>				
100 Personnel Services – Salaries				598,258.77
Total Personnel Services – Salaries				\$598,258.77
200 <u>Personnel Services – Employee Benefits</u>				
220 Social Security Contributions				44,277.40
230 PSERS Retirement Contributions				207,425.23
250 Unemployment Compensation				36.19
260 Workers' Compensation				1,459.74
270 Group Insurance – Self-Insurance				131,521.06
299 All Other Employee Benefits				34,696.87
Total Personnel Services – Employee Benefits				\$419,416.49
300 <u>Purchased Professional and Technical Services</u>				
330 Other Professional Services				38,809.23
Total Purchased Professional and Technical Services				\$38,809.23
500 <u>Other Purchased Services</u>				
550 Printing and Binding				1,037.00
580 Travel				3,865.29
Total Other Purchased Services				\$4,902.29
600 <u>Supplies</u>				
610 General Supplies				2,094.20
640 Books and Periodicals				2,557.80
650 Supplies & Fees – Technology Related				575.00
Total Supplies				\$5,227.00
800 <u>Other Objects</u>				
810 Dues and Fees				27,718.87
Total Other Objects				\$27,718.87
Total 2510 Fiscal Services				\$1,094,332.65

LEA : 124157802 Tredyffrin-Easttown SD

Printed 11/28/2023 1:35:34 PM

General Fund (10)				
2511 Supervision of Fiscal Services - Head of Component	<u>Elementary</u>	<u>Secondary</u>	<u>Federal</u>	<u>Total</u>
100 <u>Personnel Services – Salaries</u>				
100 Personnel Services – Salaries				598,258.77
Total Personnel Services – Salaries				\$598,258.77
200 <u>Personnel Services – Employee Benefits</u>				
220 Social Security Contributions				44,277.40
230 PSERS Retirement Contributions				207,425.23
250 Unemployment Compensation				36.19
260 Workers' Compensation				1,459.74
270 Group Insurance – Self-Insurance				131,521.06
299 All Other Employee Benefits				34,696.87
Total Personnel Services – Employee Benefits				\$419,416.49
300 <u>Purchased Professional and Technical Services</u>				
330 Other Professional Services				38,809.23
Total Purchased Professional and Technical Services				\$38,809.23
500 <u>Other Purchased Services</u>				
550 Printing and Binding				1,037.00
580 Travel				3,865.29
Total Other Purchased Services				\$4,902.29
600 <u>Supplies</u>				
610 General Supplies				2,094.20
640 Books and Periodicals				2,557.80
650 Supplies & Fees – Technology Related				575.00
Total Supplies				\$5,227.00
800 <u>Other Objects</u>				
810 Dues and Fees				27,718.87
Total Other Objects				\$27,718.87
Total 2511 Supervision of Fiscal Services - Head of Component				\$1,094,332.65

LEA : 124157802 Tredyffrin-Easttown SD

Printed 11/28/2023 1:35:34 PM

General Fund (10)

2520 Purchasing Services	<u>Elementary</u>	<u>Secondary</u>	<u>Federal</u>	<u>Total</u>
100 <u>Personnel Services – Salaries</u>				
100 Personnel Services – Salaries				166,663.08
Total Personnel Services – Salaries				\$166,663.08
200 <u>Personnel Services – Employee Benefits</u>				
220 Social Security Contributions				12,343.13
230 PSERS Retirement Contributions				57,533.86
270 Group Insurance – Self-Insurance				32,137.36
Total Personnel Services – Employee Benefits				\$102,014.35
500 <u>Other Purchased Services</u>				
550 Printing and Binding				30.65
580 Travel				1,225.29
Total Other Purchased Services				\$1,255.94
600 <u>Supplies</u>				
610 General Supplies				618.32
650 Supplies & Fees – Technology Related				65.00
Total Supplies				\$683.32
Total 2520 Purchasing Services				\$270,616.69

LEA : 124157802 Tredyffrin-Easttown SD

Printed 11/28/2023 1:35:34 PM

General Fund (10)

2600 Operation and Maintenance of Plant Services	Elementary	Secondary	Federal	Total
100 <u>Personnel Services – Salaries</u>				
100 Personnel Services – Salaries				5,155,776.91
Total Personnel Services – Salaries				\$5,155,776.91
200 <u>Personnel Services – Employee Benefits</u>				
220 Social Security Contributions				387,605.22
230 PSERS Retirement Contributions				1,746,332.11
250 Unemployment Compensation				325.71
260 Workers' Compensation				8,520.63
270 Group Insurance – Self-Insurance				891,467.91
299 All Other Employee Benefits				29,749.86
Total Personnel Services – Employee Benefits				\$3,064,001.44
300 <u>Purchased Professional and Technical Services</u>				
329 Professional Educational Services – Other				237,786.09
Total Purchased Professional and Technical Services				\$237,786.09
400 <u>Purchased Property Services</u>				
420 Utility Services				1,178,236.77
430 Repairs and Maintenance Services				1,985,310.38
440 Rentals				52,101.07
490 Other Purchased Property Services				136,732.26
Total Purchased Property Services				\$3,352,380.48
500 <u>Other Purchased Services</u>				
529 Other Insurance				163,871.00
530 Communications				194,922.82
Total Other Purchased Services				\$358,793.82
600 <u>Supplies</u>				
610 General Supplies	496,796.28	542,604.36		1,039,400.64
620 Energy				498,166.13
650 Supplies & Fees – Technology Related				10,794.70
Total Supplies	\$496,796.28	\$542,604.36		\$1,548,361.47
700 <u>Property</u>				
756 Capitalized Technology Equipment – Original				48,288.85
762 Capitalized Equipment - Replacement				97,671.20
Total Property				\$145,960.05
800 <u>Other Objects</u>				
810 Dues and Fees				3,442.70
Total Other Objects				\$3,442.70
Total 2600 Operation and Maintenance of Plant Services	\$496,796.28	\$542,604.36		\$13,866,502.96

LEA : 124157802 Tredyffrin-Easttown SD

Printed 11/28/2023 1:35:34 PM

General Fund (10)

2610 Supervision of Operation and Maintenance of Plant Services	Elementary	Secondary	Federal	Total
100 <u>Personnel Services – Salaries</u>				
100 Personnel Services – Salaries				5,063,628.15
Total Personnel Services – Salaries				\$5,063,628.15
200 <u>Personnel Services – Employee Benefits</u>				
220 Social Security Contributions				381,727.50
230 PSERS Retirement Contributions				1,716,620.89
250 Unemployment Compensation				325.71
260 Workers' Compensation				8,520.63
270 Group Insurance – Self-Insurance				882,181.48
299 All Other Employee Benefits				28,924.86
Total Personnel Services – Employee Benefits				\$3,018,301.07
300 <u>Purchased Professional and Technical Services</u>				
329 Professional Educational Services – Other				237,786.09
Total Purchased Professional and Technical Services				\$237,786.09
400 <u>Purchased Property Services</u>				
420 Utility Services				1,178,236.77
430 Repairs and Maintenance Services				1,984,746.29
440 Rentals				52,101.07
490 Other Purchased Property Services				136,732.26
Total Purchased Property Services				\$3,351,816.39
500 <u>Other Purchased Services</u>				
529 Other Insurance				163,871.00
530 Communications				194,922.82
Total Other Purchased Services				\$358,793.82
600 <u>Supplies</u>				
610 General Supplies	496,796.28	541,744.37		1,038,540.65
620 Energy				498,166.13
650 Supplies & Fees – Technology Related				10,314.09
Total Supplies	\$496,796.28	\$541,744.37		\$1,547,020.87
700 <u>Property</u>				
756 Capitalized Technology Equipment – Original				48,288.85
762 Capitalized Equipment - Replacement				97,671.20
Total Property				\$145,960.05
800 <u>Other Objects</u>				
810 Dues and Fees				3,442.70
Total Other Objects				\$3,442.70
Total 2610 Supervision of Operation and Maintenance of Plant Services	\$496,796.28	\$541,744.37		\$13,726,749.14

LEA : 124157802 Tredyffrin-Easttown SD

Printed 11/28/2023 1:35:34 PM

General Fund (10)				
2611 Supervision of Operation and Maintenance of Plant Services – Head of Component	<u>Elementary</u>	<u>Secondary</u>	<u>Federal</u>	<u>Total</u>
100 <u>Personnel Services – Salaries</u>				
100 Personnel Services – Salaries				5,063,628.15
Total Personnel Services – Salaries				\$5,063,628.15
200 <u>Personnel Services – Employee Benefits</u>				
220 Social Security Contributions				381,727.50
230 PSERS Retirement Contributions				1,716,620.89
250 Unemployment Compensation				325.71
260 Workers' Compensation				8,520.63
270 Group Insurance – Self-Insurance				882,181.48
299 All Other Employee Benefits				28,924.86
Total Personnel Services – Employee Benefits				\$3,018,301.07
300 <u>Purchased Professional and Technical Services</u>				
329 Professional Educational Services – Other				237,786.09
Total Purchased Professional and Technical Services				\$237,786.09
400 <u>Purchased Property Services</u>				
420 Utility Services				1,178,236.77
430 Repairs and Maintenance Services				1,984,746.29
440 Rentals				52,101.07
490 Other Purchased Property Services				136,732.26
Total Purchased Property Services				\$3,351,816.39
500 <u>Other Purchased Services</u>				
529 Other Insurance				163,871.00
530 Communications				194,922.82
Total Other Purchased Services				\$358,793.82
600 <u>Supplies</u>				
610 General Supplies	496,796.28	541,744.37		1,038,540.65
620 Energy				498,166.13
650 Supplies & Fees – Technology Related				10,314.09
Total Supplies	\$496,796.28	\$541,744.37		\$1,547,020.87
700 <u>Property</u>				
756 Capitalized Technology Equipment – Original				48,288.85
762 Capitalized Equipment - Replacement				97,671.20
Total Property				\$145,960.05
800 <u>Other Objects</u>				
810 Dues and Fees				3,442.70
Total Other Objects				\$3,442.70
Total 2611 Supervision of Operation and Maintenance of Plant Services – Head of Component	\$496,796.28	\$541,744.37		\$13,726,749.14

LEA : 124157802 Tredyffrin-Easttown SD

Printed 11/28/2023 1:35:34 PM

General Fund (10)				
2620 Operation of Buildings Services	<u>Elementary</u>	<u>Secondary</u>	<u>Federal</u>	<u>Total</u>
400 <u>Purchased Property Services</u>				
430 Repairs and Maintenance Services				564.09
Total Purchased Property Services				\$564.09
600 <u>Supplies</u>				
610 General Supplies		859.99		859.99
650 Supplies & Fees – Technology Related				480.61
Total Supplies		\$859.99		\$1,340.60
Total 2620 Operation of Buildings Services		\$859.99		\$1,904.69

LEA : 124157802 Tredyffrin-Easttown SD

Printed 11/28/2023 1:35:34 PM

General Fund (10)

2660 Safety and Security Services	<u>Elementary</u>	<u>Secondary</u>	<u>Federal</u>	<u>Total</u>
100 <u>Personnel Services – Salaries</u>				
100 Personnel Services – Salaries				92,148.76
Total Personnel Services – Salaries				\$92,148.76
200 <u>Personnel Services – Employee Benefits</u>				
220 Social Security Contributions				5,877.72
230 PSERS Retirement Contributions				29,711.22
270 Group Insurance – Self-Insurance				9,286.43
299 All Other Employee Benefits				825.00
Total Personnel Services – Employee Benefits				\$45,700.37
Total 2660 Safety and Security Services				\$137,849.13

LEA : 124157802 Tredyffrin-Easttown SD

Printed 11/28/2023 1:35:34 PM

General Fund (10)

2700 Student Transportation Services	<u>Elementary</u>	<u>Secondary</u>	<u>Federal</u>	<u>Total</u>
100 <u>Personnel Services – Salaries</u>				
100 Personnel Services – Salaries				278,969.20
Total Personnel Services – Salaries				\$278,969.20
200 <u>Personnel Services – Employee Benefits</u>				
220 Social Security Contributions				20,782.36
230 PSERS Retirement Contributions				98,259.28
250 Unemployment Compensation				36.19
260 Workers' Compensation				1,998.90
270 Group Insurance – Self-Insurance				74,084.22
Total Personnel Services – Employee Benefits				\$195,160.95
300 <u>Purchased Professional and Technical Services</u>				
323 Professional Educational Services – Other Educational Agencies			443.24	443.24
Total Purchased Professional and Technical Services			\$443.24	\$443.24
400 <u>Purchased Property Services</u>				
430 Repairs and Maintenance Services				124.46
440 Rentals				9,500.00
Total Purchased Property Services				\$9,624.46
500 <u>Other Purchased Services</u>				
513 Contracted Carriers				5,882,642.27
516 Student Transportation Services From the IU			21,100.20	21,100.20
580 Travel				1,332.70
Total Other Purchased Services			\$21,100.20	\$5,905,075.17
600 <u>Supplies</u>				
610 General Supplies				464.39
620 Energy				488,758.57
650 Supplies & Fees – Technology Related				6,739.12
Total Supplies				\$495,962.08
Total 2700 Student Transportation Services			\$21,543.44	\$6,885,235.10

LEA : 124157802 Tredyffrin-Easttown SD

Printed 11/28/2023 1:35:34 PM

General Fund (10)

2710 Supervision of Student Transportation Services	<u>Elementary</u>	<u>Secondary</u>	<u>Federal</u>	<u>Total</u>
100 <u>Personnel Services – Salaries</u>				
100 Personnel Services – Salaries				278,969.20
Total Personnel Services – Salaries				\$278,969.20
200 <u>Personnel Services – Employee Benefits</u>				
220 Social Security Contributions				20,782.36
230 PSERS Retirement Contributions				98,259.28
250 Unemployment Compensation				36.19
260 Workers' Compensation				1,998.90
270 Group Insurance – Self-Insurance				74,084.22
Total Personnel Services – Employee Benefits				\$195,160.95
300 <u>Purchased Professional and Technical Services</u>				
323 Professional Educational Services – Other Educational Agencies			443.24	443.24
Total Purchased Professional and Technical Services			\$443.24	\$443.24
400 <u>Purchased Property Services</u>				
430 Repairs and Maintenance Services				124.46
440 Rentals				9,500.00
Total Purchased Property Services				\$9,624.46
500 <u>Other Purchased Services</u>				
513 Contracted Carriers				4,566,841.91
516 Student Transportation Services From the IU			21,100.20	21,100.20
580 Travel				1,332.70
Total Other Purchased Services			\$21,100.20	\$4,589,274.81
600 <u>Supplies</u>				
610 General Supplies				464.39
620 Energy				488,758.57
650 Supplies & Fees – Technology Related				6,739.12
Total Supplies				\$495,962.08
Total 2710 Supervision of Student Transportation Services			\$21,543.44	\$5,569,434.74

LEA : 124157802 Tredyffrin-Easttown SD

Printed 11/28/2023 1:35:34 PM

General Fund (10)				
2711 Supervision of Student Transportation Services – Head of Component	<u>Elementary</u>	<u>Secondary</u>	<u>Federal</u>	<u>Total</u>
100 <u>Personnel Services – Salaries</u>				
100 Personnel Services – Salaries				278,969.20
Total Personnel Services – Salaries				\$278,969.20
200 <u>Personnel Services – Employee Benefits</u>				
220 Social Security Contributions				20,782.36
230 PSERS Retirement Contributions				98,259.28
250 Unemployment Compensation				36.19
260 Workers' Compensation				1,998.90
270 Group Insurance – Self-Insurance				74,084.22
Total Personnel Services – Employee Benefits				\$195,160.95
300 <u>Purchased Professional and Technical Services</u>				
323 Professional Educational Services – Other Educational Agencies			443.24	443.24
Total Purchased Professional and Technical Services			\$443.24	\$443.24
400 <u>Purchased Property Services</u>				
430 Repairs and Maintenance Services				124.46
440 Rentals				9,500.00
Total Purchased Property Services				\$9,624.46
500 <u>Other Purchased Services</u>				
513 Contracted Carriers				4,566,841.91
516 Student Transportation Services From the IU			21,100.20	21,100.20
580 Travel				1,332.70
Total Other Purchased Services			\$21,100.20	\$4,589,274.81
600 <u>Supplies</u>				
610 General Supplies				464.39
620 Energy				488,758.57
650 Supplies & Fees – Technology Related				6,739.12
Total Supplies				\$495,962.08
Total 2711 Supervision of Student Transportation Services – Head of Component			\$21,543.44	\$5,569,434.74

LEA : 124157802 Tredyffrin-Easttown SD

Printed 11/28/2023 1:35:34 PM

General Fund (10)

2750 Nonpublic Transportation	<u>Elementary</u>	<u>Secondary</u>	<u>Federal</u>	<u>Total</u>
500 <u>Other Purchased Services</u>				
513 Contracted Carriers				1,315,800.36
Total Other Purchased Services				\$1,315,800.36
Total 2750 Nonpublic Transportation				\$1,315,800.36

LEA : 124157802 Tredyffrin-Easttown SD

Printed 11/28/2023 1:35:34 PM

General Fund (10)

2800 Support Services – Central	Elementary	Secondary	Federal	Total
100 <u>Personnel Services – Salaries</u>				
100 Personnel Services – Salaries				1,531,382.77
Total Personnel Services – Salaries				\$1,531,382.77
200 <u>Personnel Services – Employee Benefits</u>				
220 Social Security Contributions				112,379.64
230 PSERS Retirement Contributions				511,061.85
250 Unemployment Compensation				36.19
260 Workers' Compensation				1,253.11
270 Group Insurance – Self-Insurance				204,200.54
299 All Other Employee Benefits				5,775.00
Total Personnel Services – Employee Benefits				\$834,706.33
300 <u>Purchased Professional and Technical Services</u>				
329 Professional Educational Services – Other				61,556.61
330 Other Professional Services				1,267.00
340 Technical Services				272,463.44
Total Purchased Professional and Technical Services				\$335,287.05
400 <u>Purchased Property Services</u>				
430 Repairs and Maintenance Services				22,782.23
440 Rentals				130,607.88
Total Purchased Property Services				\$153,390.11
500 <u>Other Purchased Services</u>				
580 Travel				4,710.10
Total Other Purchased Services				\$4,710.10
600 <u>Supplies</u>				
610 General Supplies				2,984.70
640 Books and Periodicals				988.86
650 Supplies & Fees – Technology Related				979,515.74
Total Supplies				\$983,489.30
700 <u>Property</u>				
766 Capitalized Technology Equipment – Replacement				50,446.00
Total Property				\$50,446.00
800 <u>Other Objects</u>				
810 Dues and Fees				280.00
Total Other Objects				\$280.00
Total 2800 Support Services – Central				\$3,893,691.66

LEA : 124157802 Tredyffrin-Easttown SD

Printed 11/28/2023 1:35:34 PM

General Fund (10)

2810 Planning, Research, Development and Evaluation Services	<u>Elementary</u>	<u>Secondary</u>	<u>Federal</u>	<u>Total</u>
300 <u>Purchased Professional and Technical Services</u>				
329 Professional Educational Services – Other				28,500.00
Total Purchased Professional and Technical Services				\$28,500.00
600 <u>Supplies</u>				
610 General Supplies				191.00
640 Books and Periodicals				988.86
Total Supplies				\$1,179.86
Total 2810 Planning, Research, Development and Evaluation Services				\$29,679.86

LEA : 124157802 Tredyffrin-Easttown SD

Printed 11/28/2023 1:35:34 PM

General Fund (10)

2830 Staff Services

	<u>Elementary</u>	<u>Secondary</u>	<u>Federal</u>	<u>Total</u>
100 <u>Personnel Services – Salaries</u>				
100 Personnel Services – Salaries				461,584.63
Total Personnel Services – Salaries				\$461,584.63
200 <u>Personnel Services – Employee Benefits</u>				
220 Social Security Contributions				32,241.56
230 PSERS Retirement Contributions				144,713.27
250 Unemployment Compensation				36.19
260 Workers' Compensation				1,253.11
270 Group Insurance – Self-Insurance				37,810.70
299 All Other Employee Benefits				825.00
Total Personnel Services – Employee Benefits				\$216,879.83
300 <u>Purchased Professional and Technical Services</u>				
329 Professional Educational Services – Other				6,274.06
330 Other Professional Services				1,267.00
Total Purchased Professional and Technical Services				\$7,541.06
Total 2830 Staff Services				\$686,005.52

LEA : 124157802 Tredyffrin-Easttown SD

Printed 11/28/2023 1:35:34 PM

General Fund (10)

2831 Supervision of Staff Services

Elementary Secondary Federal Total

100 <u>Personnel Services – Salaries</u>				
100 Personnel Services – Salaries				461,584.63
Total Personnel Services – Salaries				\$461,584.63
200 <u>Personnel Services – Employee Benefits</u>				
220 Social Security Contributions				32,241.56
230 PSERS Retirement Contributions				144,713.27
250 Unemployment Compensation				36.19
260 Workers' Compensation				1,253.11
270 Group Insurance – Self-Insurance				37,810.70
299 All Other Employee Benefits				825.00
Total Personnel Services – Employee Benefits				\$216,879.83
300 <u>Purchased Professional and Technical Services</u>				
329 Professional Educational Services – Other				6,274.06
330 Other Professional Services				1,267.00
Total Purchased Professional and Technical Services				\$7,541.06
Total 2831 Supervision of Staff Services				\$686,005.52

LEA : 124157802 Tredyffrin-Easttown SD

Printed 11/28/2023 1:35:34 PM

General Fund (10)

2840 Data Processing Services	<u>Elementary</u>	<u>Secondary</u>	<u>Federal</u>	<u>Total</u>
100 <u>Personnel Services – Salaries</u>				
100 Personnel Services – Salaries				1,034,577.66
Total Personnel Services – Salaries				\$1,034,577.66
200 <u>Personnel Services – Employee Benefits</u>				
220 Social Security Contributions				77,447.51
230 PSERS Retirement Contributions				358,494.48
270 Group Insurance – Self-Insurance				166,326.83
299 All Other Employee Benefits				4,950.00
Total Personnel Services – Employee Benefits				\$607,218.82
300 <u>Purchased Professional and Technical Services</u>				
329 Professional Educational Services – Other				8,717.34
340 Technical Services				272,463.44
Total Purchased Professional and Technical Services				\$281,180.78
400 <u>Purchased Property Services</u>				
430 Repairs and Maintenance Services				22,782.23
440 Rentals				1,289.75
Total Purchased Property Services				\$24,071.98
500 <u>Other Purchased Services</u>				
580 Travel				4,710.10
Total Other Purchased Services				\$4,710.10
600 <u>Supplies</u>				
610 General Supplies				1,079.82
650 Supplies & Fees – Technology Related				966,923.45
Total Supplies				\$968,003.27
700 <u>Property</u>				
766 Capitalized Technology Equipment – Replacement				50,446.00
Total Property				\$50,446.00
800 <u>Other Objects</u>				
810 Dues and Fees				280.00
Total Other Objects				\$280.00
Total 2840 Data Processing Services				\$2,970,488.61

LEA : 124157802 Tredyffrin-Easttown SD

Printed 11/28/2023 1:35:34 PM

General Fund (10)

2890 Other Support Services Central	<u>Elementary</u>	<u>Secondary</u>	<u>Federal</u>	<u>Total</u>
100 <u>Personnel Services – Salaries</u>				
100 Personnel Services – Salaries				35,220.48
Total Personnel Services – Salaries				\$35,220.48
200 <u>Personnel Services – Employee Benefits</u>				
220 Social Security Contributions				2,690.57
230 PSERS Retirement Contributions				7,854.10
270 Group Insurance – Self-Insurance				63.01
Total Personnel Services – Employee Benefits				\$10,607.68
300 <u>Purchased Professional and Technical Services</u>				
329 Professional Educational Services – Other				18,065.21
Total Purchased Professional and Technical Services				\$18,065.21
400 <u>Purchased Property Services</u>				
440 Rentals				129,318.13
Total Purchased Property Services				\$129,318.13
600 <u>Supplies</u>				
610 General Supplies				1,713.88
650 Supplies & Fees – Technology Related				12,592.29
Total Supplies				\$14,306.17
Total 2890 Other Support Services Central				\$207,517.67

LEA : 124157802 Tredyffrin-Easttown SD

Printed 11/28/2023 1:35:34 PM

General Fund (10)

2900 Other Support Services	<u>Elementary</u>	<u>Secondary</u>	<u>Federal</u>	<u>Total</u>
100 <u>Personnel Services – Salaries</u>				
100 Personnel Services – Salaries				177,895.52
Total Personnel Services – Salaries				\$177,895.52
200 <u>Personnel Services – Employee Benefits</u>				
220 Social Security Contributions				13,559.42
230 PSERS Retirement Contributions				554.33
250 Unemployment Compensation				18.09
260 Workers' Compensation				81.70
270 Group Insurance – Self-Insurance				211,097.08
Total Personnel Services – Employee Benefits				\$225,310.62
300 <u>Purchased Professional and Technical Services</u>				
330 Other Professional Services				23,232.80
Total Purchased Professional and Technical Services				\$23,232.80
500 <u>Other Purchased Services</u>				
595 IU Payments By Withholding			72,476.68	72,476.68
Total Other Purchased Services			\$72,476.68	\$72,476.68
Total 2900 Other Support Services			\$72,476.68	\$498,915.62

LEA : 124157802 Tredyffrin-Easttown SD

Printed 11/28/2023 1:35:34 PM

General Fund (10)

2910 Support Services Not Listed Elsewhere In the 2000 Series	<u>Elementary</u>	<u>Secondary</u>	<u>Federal</u>	<u>Total</u>
100 <u>Personnel Services – Salaries</u>				
100 Personnel Services – Salaries				177,895.52
Total Personnel Services – Salaries				\$177,895.52
200 <u>Personnel Services – Employee Benefits</u>				
220 Social Security Contributions				13,559.42
230 PSERS Retirement Contributions				554.33
250 Unemployment Compensation				18.09
260 Workers' Compensation				81.70
270 Group Insurance – Self-Insurance				211,097.08
Total Personnel Services – Employee Benefits				\$225,310.62
300 <u>Purchased Professional and Technical Services</u>				
330 Other Professional Services				23,232.80
Total Purchased Professional and Technical Services				\$23,232.80
500 <u>Other Purchased Services</u>				
595 IU Payments By Withholding			72,476.68	72,476.68
Total Other Purchased Services			\$72,476.68	\$72,476.68
Total 2910 Support Services Not Listed Elsewhere In the 2000 Series			\$72,476.68	\$498,915.62

LEA : 124157802 Tredyffrin-Easttown SD

Printed 11/28/2023 1:35:43 PM

General Fund (10)

3000 Operation of Non-Instructional Services		Total
100 <u>Personnel Services – Salaries</u>		
100 Personnel Services – Salaries		932,819.24
Total Personnel Services – Salaries		\$932,819.24
200 <u>Personnel Services – Employee Benefits</u>		
220 Social Security Contributions		70,216.94
230 PSERS Retirement Contributions		301,365.16
250 Unemployment Compensation		72.38
260 Workers' Compensation		2,578.12
270 Group Insurance – Self-Insurance		3,404.91
299 All Other Employee Benefits		418.91
Total Personnel Services – Employee Benefits		\$378,056.42
300 <u>Purchased Professional and Technical Services</u>		
329 Professional Educational Services – Other		66,143.38
340 Technical Services		206,115.84
Total Purchased Professional and Technical Services		\$272,259.22
400 <u>Purchased Property Services</u>		
430 Repairs and Maintenance Services		17,096.69
440 Rentals		68,420.63
Total Purchased Property Services		\$85,517.32
500 <u>Other Purchased Services</u>		
510 Student Transportation Services		141,731.03
520 Insurance – General		34,496.00
580 Travel		9,082.39
Total Other Purchased Services		\$185,309.42
600 <u>Supplies</u>		
610 General Supplies		226,485.73
650 Supplies & Fees – Technology Related		8,137.29
Total Supplies		\$234,623.02
700 <u>Property</u>		
752 Capital Equipment – Original and Additional		16,249.05
762 Capitalized Equipment - Replacement		17,050.00
Total Property		\$33,299.05
800 <u>Other Objects</u>		
810 Dues and Fees		41,855.25
Total Other Objects		\$41,855.25
Total 3000 Operation of Non-Instructional Services		\$2,163,738.94

LEA : 124157802 Tredyffrin-Easttown SD

Printed 11/28/2023 1:35:43 PM

General Fund (10)				
3200 Student Activities	<u>Elementary</u>	<u>Secondary</u>	<u>Federal</u>	<u>Total</u>
100 <u>Personnel Services – Salaries</u>				
100 Personnel Services – Salaries				932,819.24
Total Personnel Services – Salaries				\$932,819.24
200 <u>Personnel Services – Employee Benefits</u>				
220 Social Security Contributions				70,216.94
230 PSERS Retirement Contributions				301,365.16
250 Unemployment Compensation				72.38
260 Workers' Compensation				2,578.12
270 Group Insurance – Self-Insurance				3,404.91
299 All Other Employee Benefits				418.91
Total Personnel Services – Employee Benefits				\$378,056.42
300 <u>Purchased Professional and Technical Services</u>				
329 Professional Educational Services – Other				66,143.38
340 Technical Services				206,115.84
Total Purchased Professional and Technical Services				\$272,259.22
400 <u>Purchased Property Services</u>				
430 Repairs and Maintenance Services				17,096.69
440 Rentals				68,420.63
Total Purchased Property Services				\$85,517.32
500 <u>Other Purchased Services</u>				
510 Student Transportation Services				141,731.03
520 Insurance – General				34,496.00
580 Travel				9,082.39
Total Other Purchased Services				\$185,309.42
600 <u>Supplies</u>				
610 General Supplies				226,485.73
650 Supplies & Fees – Technology Related				8,137.29
Total Supplies				\$234,623.02
700 <u>Property</u>				
752 Capital Equipment – Original and Additional				16,249.05
762 Capitalized Equipment - Replacement				17,050.00
Total Property				\$33,299.05
800 <u>Other Objects</u>				
810 Dues and Fees				41,855.25
Total Other Objects				\$41,855.25
Total 3200 Student Activities				\$2,163,738.94

LEA : 124157802 Tredyffrin-Easttown SD

Printed 11/28/2023 1:35:51 PM

General Fund (10)

5000 Other Expenditures and Financing Uses

Total

800 Other Objects

830 Interest	3,304,994.46
880 Refunds of Prior Years' Receipts	2,042.47

Total Other Objects	\$3,307,036.93
---------------------	----------------

900 Other Uses of Funds

910 Redemption of Principal	4,065,000.00
932 Capital Reserve Fund Transfers Applicable To Fund 32	5,000,000.00

Total Other Uses of Funds	\$9,065,000.00
---------------------------	----------------

Total 5000 Other Expenditures and Financing Uses	\$12,372,036.93
--	-----------------

LEA : 124157802 Tredyffrin-Easttown SD

Printed 11/28/2023 1:35:51 PM

General Fund (10)

5100 Debt Service / Other Expenditures and Financing Uses	<u>Elementary</u>	<u>Secondary</u>	<u>Federal</u>	<u>Total</u>
800 <u>Other Objects</u>				
830 Interest				3,304,994.46
880 Refunds of Prior Years' Receipts				2,042.47
Total Other Objects				\$3,307,036.93
900 <u>Other Uses of Funds</u>				
910 Redemption of Principal				4,065,000.00
Total Other Uses of Funds				\$4,065,000.00
Total 5100 Debt Service / Other Expenditures and Financing Uses				\$7,372,036.93

LEA : 124157802 Tredyffrin-Easttown SD

Printed 11/28/2023 1:35:51 PM

General Fund (10)				
5110 Debt Service	<u>Elementary</u>	<u>Secondary</u>	<u>Federal</u>	<u>Total</u>
800 <u>Other Objects</u>				
830 Interest				3,304,994.46
Total Other Objects				\$3,304,994.46
900 <u>Other Uses of Funds</u>				
910 Redemption of Principal				4,065,000.00
Total Other Uses of Funds				\$4,065,000.00
Total 5110 Debt Service				\$7,369,994.46

LEA : 124157802 Tredyffrin-Easttown SD

Printed 11/28/2023 1:35:51 PM

General Fund (10)

5130 Refund of Prior Year Revenues / Receipts	<u>Elementary</u>	<u>Secondary</u>	<u>Federal</u>	<u>Total</u>
800 <u>Other Objects</u>				
880 Refunds of Prior Years' Receipts				2,042.47
Total Other Objects				\$2,042.47
Total 5130 Refund of Prior Year Revenues / Receipts				\$2,042.47

LEA : 124157802 Tredyffrin-Easttown SD

Printed 11/28/2023 1:35:51 PM

General Fund (10)

5200 Interfund Transfers – Out	<u>Elementary</u>	<u>Secondary</u>	<u>Federal</u>	<u>Total</u>
900 <u>Other Uses of Funds</u>				
932 Capital Reserve Fund Transfers Applicable To Fund 32				5,000,000.00
Total Other Uses of Funds				\$5,000,000.00
Total 5200 Interfund Transfers – Out				\$5,000,000.00

LEA : 124157802 Tredyffrin-Easttown SD

Printed 11/28/2023 1:35:51 PM

General Fund (10)

5230 Capital Projects Fund Transfers	<u>Elementary</u>	<u>Secondary</u>	<u>Federal</u>	<u>Total</u>
900 <u>Other Uses of Funds</u>				
932 Capital Reserve Fund Transfers Applicable To Fund 32				5,000,000.00
Total Other Uses of Funds				\$5,000,000.00
Total 5230 Capital Projects Fund Transfers				\$5,000,000.00

LEA : 124157802 Tredyffrin-Easttown SD

Printed 11/28/2023 1:35:39 PM

Other Capital Projects Fund (39)

2000 Support Services

Total

700 Property

738 Technology Software Lease and Other Right-to-Use Arrangements	125,684.30
752 Capital Equipment – Original and Additional	258,827.34

Total Property	\$384,511.64
----------------	--------------

800 Other Objects

810 Dues and Fees	94,782.53
-------------------	-----------

Total Other Objects	\$94,782.53
---------------------	-------------

Total 2000 Support Services	\$479,294.17
-----------------------------	--------------

LEA : 124157802 Tredyffrin-Easttown SD

Printed 11/28/2023 1:35:39 PM

Other Capital Projects Fund (39)

2300 Support Services – Administration

Elementary

Secondary

Federal

Total

700 Property

752 Capital Equipment – Original and Additional

182,970.34

Total Property				\$182,970.34
Total 2300 Support Services – Administration				\$182,970.34

LEA : 124157802 Tredyffrin-Easttown SD

Printed 11/28/2023 1:35:39 PM

Other Capital Projects Fund (39)

2360 Office of the Superintendent / Executive Director Services

Elementary

Secondary

Federal

Total

700 Property

752 Capital Equipment – Original and Additional

182,970.34

Total Property				\$182,970.34
Total 2360 Office of the Superintendent / Executive Director Services				\$182,970.34

LEA : 124157802 Tredyffrin-Easttown SD

Printed 11/28/2023 1:35:39 PM

Other Capital Projects Fund (39)

2800 Support Services – Central

Elementary Secondary Federal Total

700 <u>Property</u>				
738 Technology Software Lease and Other Right-to-Use Arrangements				125,684.30
752 Capital Equipment – Original and Additional				75,857.00
Total Property				\$201,541.30
800 <u>Other Objects</u>				
810 Dues and Fees				94,782.53
Total Other Objects				\$94,782.53
Total 2800 Support Services – Central				\$296,323.83

LEA : 124157802 Tredyffrin-Easttown SD

Printed 11/28/2023 1:35:39 PM

Other Capital Projects Fund (39)

2890 Other Support Services Central	<u>Elementary</u>	<u>Secondary</u>	<u>Federal</u>	<u>Total</u>
700 <u>Property</u>				
738 Technology Software Lease and Other Right-to-Use Arrangements				125,684.30
752 Capital Equipment – Original and Additional				75,857.00
Total Property				\$201,541.30
800 <u>Other Objects</u>				
810 Dues and Fees				94,782.53
Total Other Objects				\$94,782.53
Total 2890 Other Support Services Central				\$296,323.83

LEA : 124157802 Tredyffrin-Easttown SD

Printed 11/28/2023 1:35:46 PM

Other Capital Projects Fund (39)

4000 Facilities Acquisition, Construction and Improvement Services

Total

100 Personnel Services – Salaries	1,780.18
Total Personnel Services – Salaries	\$1,780.18
300 Purchased Professional and Technical Services	
390 Other Purchased Professional and Technical Services	1,758,392.78
Total Purchased Professional and Technical Services	\$1,758,392.78
400 Purchased Property Services	
430 Repairs and Maintenance Services	3,048,061.73
450 Construction Services	2,644,488.60
Total Purchased Property Services	\$5,692,550.33
600 Supplies	
610 General Supplies	91,803.10
Total Supplies	\$91,803.10
700 Property	
738 Technology Software Lease and Other Right-to-Use Arrangements	713,812.13
Total Property	\$713,812.13
Total 4000 Facilities Acquisition, Construction and Improvement Services	\$8,258,338.52

LEA : 124157802 Tredyffrin-Easttown SD

Printed 11/28/2023 1:35:46 PM

Other Capital Projects Fund (39)

4600 Existing Building Improvement Services	<u>Elementary</u>	<u>Secondary</u>	<u>Federal</u>	<u>Total</u>
100 <u>Personnel Services – Salaries</u>				
100 Personnel Services – Salaries				1,780.18
Total Personnel Services – Salaries				\$1,780.18
300 <u>Purchased Professional and Technical Services</u>				
390 Other Purchased Professional and Technical Services				1,758,392.78
Total Purchased Professional and Technical Services				\$1,758,392.78
400 <u>Purchased Property Services</u>				
430 Repairs and Maintenance Services				3,048,061.73
450 Construction Services				2,644,488.60
Total Purchased Property Services				\$5,692,550.33
600 <u>Supplies</u>				
610 General Supplies				91,803.10
Total Supplies				\$91,803.10
700 <u>Property</u>				
738 Technology Software Lease and Other Right-to-Use Arrangements				713,812.13
Total Property				\$713,812.13
Total 4600 Existing Building Improvement Services				\$8,258,338.52

LEA : 124157802 Tredyffrin-Easttown SD

Printed 11/28/2023 1:35:55 PM

	<u>General Fund(10)</u>	<u>Student Sponsored Activity Fund(21)</u>	<u>Public Purpose Trust(27)</u>	<u>Other Compt Approved (28)</u>	<u>Athletic / Activity(29)</u>
1000 <u>Instruction</u>					
1100 Regular Programs - Elementary / Secondary	70,953,085.17				
1200 Special Programs - Elementary / Secondary	31,405,643.64				
1300 Vocational Education	782,696.00				
1400 Other Instructional Programs - Elementary / Secondary	171,945.90				
Total Instruction	\$103,313,370.71				
2000 <u>Support Services</u>					
2100 Support Services - Students	6,354,474.53				
2200 Support Services - Instructional Staff	4,386,024.62				
2300 Support Services - Administration	9,110,166.27				
2400 Support Services - Pupil Health	2,175,595.59				
2500 Support Services - Business	1,364,949.34				
2600 Operation and Maintenance of Plant Services	13,866,502.96				
2700 Student Transportation Services	6,885,235.10				
2800 Support Services - Central	3,893,691.66				
2900 Other Support Services	498,915.62				
Total Support Services	\$48,535,555.69				
3000 <u>Operation of Non-Instructional Services</u>					
3200 Student Activities	2,163,738.94				
Total Operation of Non-Instructional Services	\$2,163,738.94				
4000 <u>Facilities Acquisition, Construction and Improvement Services</u>					
4600 Existing Building Improvement Services					
Total Facilities Acquisition, Construction and Improvement Services					
5000 <u>Other Expenditures and Financing Uses</u>					
5100 Debt Service / Other Expenditures and Financing Uses	7,372,036.93				
5200 Interfund Transfers - Out	5,000,000.00				
Total Other Expenditures and Financing Uses	\$12,372,036.93				
TOTAL ACTUAL EXPENDITURES & OTHER FINANCING USES	\$166,384,702.27				

LEA : 124157802 Tredyffrin-Easttown SD

Printed 11/28/2023 1:35:55 PM

	<u>Capital Reserve (690.1850)(31)</u>	<u>Capital Reserve (1431)(32)</u>	<u>Other Capital Projects Fund(39)</u>	<u>Debt Service(40)</u>	<u>Permanent(90)</u>
1000 <u>Instruction</u>					
1100 Regular Programs - Elementary / Secondary					
1200 Special Programs - Elementary / Secondary					
1300 Vocational Education					
1400 Other Instructional Programs - Elementary / Secondary					
Total Instruction					
2000 <u>Support Services</u>					
2100 Support Services - Students					
2200 Support Services - Instructional Staff					
2300 Support Services - Administration			182,970.34		
2400 Support Services - Pupil Health					
2500 Support Services - Business					
2600 Operation and Maintenance of Plant Services					
2700 Student Transportation Services					
2800 Support Services - Central			296,323.83		
2900 Other Support Services					
Total Support Services			\$479,294.17		
3000 <u>Operation of Non-Instructional Services</u>					
3200 Student Activities					
Total Operation of Non-Instructional Services					
4000 <u>Facilities Acquisition, Construction and Improvement Services</u>					
4600 Existing Building Improvement Services			8,258,338.52		
Total Facilities Acquisition, Construction and Improvement Services			\$8,258,338.52		
5000 <u>Other Expenditures and Financing Uses</u>					
5100 Debt Service / Other Expenditures and Financing Uses					
5200 Interfund Transfers - Out					
Total Other Expenditures and Financing Uses					
TOTAL ACTUAL EXPENDITURES & OTHER FINANCING USES			\$8,737,632.69		

LEA : 124157802 Tredyffrin-Easttown SD

Printed 11/28/2023 1:35:55 PM

	<u>Total</u>
1000 <u>Instruction</u>	
1100 Regular Programs - Elementary / Secondary	70,953,085.17
1200 Special Programs - Elementary / Secondary	31,405,643.64
1300 Vocational Education	782,696.00
1400 Other Instructional Programs - Elementary / Secondary	171,945.90
Total Instruction	\$103,313,370.71
2000 <u>Support Services</u>	
2100 Support Services - Students	6,354,474.53
2200 Support Services - Instructional Staff	4,386,024.62
2300 Support Services - Administration	9,293,136.61
2400 Support Services - Pupil Health	2,175,595.59
2500 Support Services - Business	1,364,949.34
2600 Operation and Maintenance of Plant Services	13,866,502.96
2700 Student Transportation Services	6,885,235.10
2800 Support Services - Central	4,190,015.49
2900 Other Support Services	498,915.62
Total Support Services	\$49,014,849.86
3000 <u>Operation of Non-Instructional Services</u>	
3200 Student Activities	2,163,738.94
Total Operation of Non-Instructional Services	\$2,163,738.94
4000 <u>Facilities Acquisition, Construction and Improvement Services</u>	
4600 Existing Building Improvement Services	8,258,338.52
Total Facilities Acquisition, Construction and Improvement Services	\$8,258,338.52
5000 <u>Other Expenditures and Financing Uses</u>	
5100 Debt Service / Other Expenditures and Financing Uses	7,372,036.93
5200 Interfund Transfers - Out	5,000,000.00
Total Other Expenditures and Financing Uses	\$12,372,036.93
TOTAL ACTUAL EXPENDITURES & OTHER FINANCING USES	\$175,122,334.96

LEA : 124157802 Tredyffrin-Easttown SD

Printed 11/28/2023 1:36:09 PM

PSERS Salary Data (Salary Data should relate to the General Fund only)

Amount	Description	Amount
	Total Salary Base for salaries subject to PSERS withholding	64,868,232.63
	Total Federally Funded salaries subject to PSERS withholding	600,322.00

Title I Expenditure Data

Amount	Description	Amount
	Expenditures Funded with Current Title I Funds	162,993.00
	Expenditures Funded with Carry over Title I Funds	
Total	Title I Expenditure Data	\$162,993.00

Title IV Revenue Data

Amount	Description	Amount
	Revenue from Title IV-A-1: Student Support and Academic Enrichment Grants	18,017.16
	Revenue from Title IV-B: 21st Century Community Learning Centers	

Title V Revenue Data

Amount	Description	Amount
	Revenue from Title V-B-2: Rural and Low-Income School Programs	
	Revenue from Title V-B-1: Small Rural School Achievement (Directly from the Federal Govt)	

1 .	<u>Current Special Education Expenditures within Function 1000</u> See list of exclusions in the note below.	21,424,696.58
2 .	<u>Current Special Education Expenditures within Function 2000</u> See list of exclusions in the note below.	1,464,669.41
2A.	<u>Current Special Education Expenditures within Sub-Function 2100</u> This data should also be included in line 2 above. See list of exclusions in the note below.	
2B.	<u>Current Special Education Expenditures within Sub-Function 2200</u> This data should also be included in line 2 above. See list of exclusions in the note below.	
2C.	<u>Current Special Education Expenditures within Sub-Function 2700</u> This data should also be included in line 2 above. See list of exclusions in the note below.	1,464,669.41
3.	<u>Current Special Education Expenditures within Sub-Function 3100</u> See list of exclusions in the note below.	
4.	<u>Current Special Education Expenditures within Sub-Function 3200</u> See list of exclusions in the note below.	

Note: The Current Special Education Expenditure amounts for each line should be calculated as follows:

- * Include the total expenditures for special education costs from all governmental funds and the food service fund 51 for the function/sub-function requested
- * Exclude data from sub-functions: 1243,1450,1500,1600,1807,2280,2450,2750,2990
- * Exclude data from objects: 322,511,512,516,561,562,564,566,592,593,594,595,596,597,700,830,899

Benefits for Staff Relative to Collective Bargaining Agreements

	OBJECT	COVERED	NOT COVERED	TOTAL
10 General Fund				
	211 Medical Insurance			
	212 Dental Insurance			
	215 Eye Care Insurance			
	216 Prescription Insurance			
	271 Self-Insurance Medical Benefits	5,851,358.30	508,813.76	6,360,172.06
	272 Self-Insurance Dental Benefits	719,413.77	62,557.72	781,971.49
	275 Self-Insurance Eye Care Benefits	116,061.85	10,092.33	126,154.18
	276 Self-Insurance Prescription Benefits	2,247,019.29	195,392.98	2,442,412.27
	FUND TOTAL	\$8,933,853.21	\$776,856.79	\$9,710,710.00
50 Enterprise Fund				
	211 Medical Insurance			
	212 Dental Insurance			
	215 Eye Care Insurance			
	216 Prescription Insurance			
	271 Self-Insurance Medical Benefits	126,698.91	11,017.30	137,716.21
	272 Self-Insurance Dental Benefits	28,433.78	2,472.50	30,906.28
	275 Self-Insurance Eye Care Benefits	2,906.01	252.70	3,158.71
	276 Self-Insurance Prescription Benefits	63,351.27	5,508.81	68,860.08
	FUND TOTAL	\$221,389.97	\$19,251.31	\$240,641.28
60 Internal Service Fund	No Self Insurance data to report			
	211 Medical Insurance			
	212 Dental Insurance			
	215 Eye Care Insurance			
	216 Prescription Insurance			
	271 Self-Insurance Medical Benefits			
	272 Self-Insurance Dental Benefits			
	275 Self-Insurance Eye Care Benefits			
	276 Self-Insurance Prescription Benefits			
	FUND TOTAL			
Total of All Funds		\$9,155,243.18	\$796,108.10	\$9,951,351.28

LEA : 124157802 Tredyffrin-Easttown SD

Printed 11/28/2023 1:36:17 PM

Function	Special Education (Prior Year)	Nonspecial Education (Prior Year)	Total (Prior Year)	Special Education (Current Year)	Nonspecial Education (Current Year)	Total (Current Year)
2120 Guidance Services	651,842.76	4,004,176.95	4,656,019.71	713,316.17	4,381,799.33	5,095,115.50
2140 Psychological Services					2,554.03	2,554.03
2150 Speech Pathology and Audiology Services	836.93	15,901.68	16,738.61	829.36	7,757.90	8,587.26
2160 Social Work Services						
2260 Instruction and Curriculum Development Services	183,616.91	1,127,932.45	1,311,549.36	191,949.78	1,179,120.05	1,371,069.83
2350 Legal and Accounting Services	224,473.65	256,415.87	480,889.52	260,304.16	506,300.43	766,604.59
2420 Medical Services	9,800.03	9,800.04	19,600.07	10,643.40	22,643.40	33,286.80
2440 Nursing Services	170,296.53	235,171.41	405,467.94	221,942.58	306,492.13	528,434.71
2700 Student Transportation Services	1,386,153.56	3,966,615.13	5,352,768.69	1,448,053.03	4,121,381.71	5,569,434.74
Total	\$2,627,020.37	\$9,616,013.53	\$12,243,033.90	\$2,847,038.48	\$10,528,048.98	\$13,375,087.46

LEA : 124157802 Tredyffrin-Easttown SD

(PRINCIPAL AMOUNTS ONLY)								
<u>GOVERNMENTAL FUNDS/ ACTIVITIES</u>	Short-Term Borrowing	General Obligation Bonds/Notes	Authority Building Obligations	Leases, Other Right to Use Arrangements	Extended Term Financing Agreements	Other Long Term Debt/Liabilities	OPEB, Comp Abs, Net Pension Liab	Total
1. Debt at Beginning of Fiscal Year		90,695,000.00		1,079,483.00			209,509,196.00	301,283,679.00
2. Additional Debt Incurred During Year				839,496.00			15,356,988.00	16,196,484.00
3. Retirements and Repayments		4,065,000.00		713,821.00			5,640,971.00	10,419,792.00
4. Debt at End of Fiscal Year		86,630,000.00		1,205,158.00			219,225,213.00	307,060,371.00
5. Accreted Interest at End Of Fiscal Year								
6. Total Debt and Accreted Interest		86,630,000.00		1,205,158.00			219,225,213.00	307,060,371.00
7. Current Portion P&I - Due within 1 year		4,150,000.00		554,407.00				4,704,407.00
8. Interest Paid during current fiscal year		3,312,592.00						3,312,592.00

(PRINCIPAL AMOUNTS ONLY)								
<u>PROPRIETARY FUNDS</u>	Short-Term Borrowing	General Obligation Bonds/Notes	Authority Building Obligations	Leases, Other Right to Use Arrangements	Extended Term Financing Agreements	Other Long Term Debt/Liabilities	OPEB, Comp Abs, Net Pension Liab	Total
1. Debt at Beginning of Fiscal Year							3,259,963.00	3,259,963.00
2. Additional Debt Incurred During Year							370,223.00	370,223.00
3. Retirements and Repayments							243,059.00	243,059.00
4. Debt at End of Fiscal Year							3,387,127.00	3,387,127.00
5. Accreted Interest at End Of Fiscal Year								
6. Total Debt and Accreted Interest							3,387,127.00	3,387,127.00
7. Current Portion P&I - Due within 1 year								
8. Interest Paid during current fiscal year								

LEA : 124157802 Tredyffrin-Easttown SD

Total Principal and Interest Payments Made by Your School - All Funds

Function	Fund		Principal (910)	Principal (920)	Interest (830)	Total (Principal +Interest)	Misc Other Uses (990)
5110	10	General Fund	4,065,000.00		3,304,994.46	7,369,994.46	
5110	20	Special Revenue Funds					
5110	30	Capital Projects Funds					
5110	40	Debt Service Fund					
5110	90	Permanent Fund					
5120	10	General Fund					
5120	20	Special Revenue Funds					
5120	30	Capital Projects Funds					
5120	40	Debt Service Fund					
5140	10	General Fund					
5140	20	Special Revenue Funds					
5140	30	Capital Projects Funds					
5140	40	Debt Service Fund					
5140	90	Permanent Fund					
Total Debt Payments - Governmental Funds			\$4,065,000.00		\$3,304,994.46	\$7,369,994.46	

Function	Fund		Principal (910)	Principal (920)	Interest (830)	Total (Principal +Interest)
5110	50	Enterprise Fund				
5110	60	Internal Service Fund				
5120	50	Enterprise Fund				
5120	60	Internal Service Fund				
5140	50	Enterprise Fund				
5140	60	Internal Service Fund				
Total Debt Payments - Proprietary Funds						

LEA : 124157802 Tredyffrin-Easttown SD

Printed 11/28/2023 1:36:22 PM

Debt Details
Governmental Funds/ Activities

Debt Category	Debt Issue Date (MM/YYYY)	Principal Amounts Only				Current Portion Due Within One Year (Principal and Interest)	Interest Paid During Fiscal Year
		Debt at Beginning of Fiscal Year	Additions	Reductions / Repayments	Debt at End of Fiscal Year		
General Obligation Bonds/Notes – CIB	11/2021	26,630,000.00		5,000.00	26,625,000.00	5,000.00	1,062,950.00
General Obligation Bonds/Notes – CIB	02/2021	24,935,000.00		90,000.00	24,845,000.00	90,000.00	484,589.00
General Obligation Bonds/Notes – CIB	07/2020	2,425,000.00		2,425,000.00			31,525.00
General Obligation Bonds/Notes – CIB	02/2019	26,900,000.00		5,000.00	26,895,000.00	5,000.00	1,341,328.00
General Obligation Bonds/Notes – CIB	10/2016	9,805,000.00		1,540,000.00	8,265,000.00	4,050,000.00	392,200.00
Leases and Other Right to Use Arrangements		1,079,483.00	839,496.00	713,821.00	1,205,158.00	554,407.00	
Compensated Absences		7,468,258.00	1,119,685.00	99,114.00	8,488,829.00		
Net Pension Liability		180,983,130.00	13,414,614.00		194,397,744.00		
Other Post-Employment Benefits (OPEB)		21,057,808.00	822,689.00	5,541,857.00	16,338,640.00		
Totals for Debt Entered:		\$301,283,679.00	\$16,196,484.00	\$10,419,792.00	\$307,060,371.00	\$4,704,407.00	\$3,312,592.00

Bond Details
Proprietary Funds

Debt Category	Debt Issue Date (MM/YYYY)	Principal Amounts Only				Current Portion Due Within One Year (Principal and Interest)	Interest Paid During Fiscal Year
		Debt at Beginning of Fiscal Year	Additions	Reductions / Repayments	Debt at End of Fiscal Year		
Compensated Absences		79,010.00	2,566.00	2,751.00	78,825.00		
Other Post-Employment Benefits (OPEB)		558,386.00	35,701.00	240,308.00	353,779.00		
Net Pension Liability		2,622,567.00	331,956.00		2,954,523.00		
Totals for Debt Entered:		\$3,259,963.00	\$370,223.00	\$243,059.00	\$3,387,127.00		

LEA : 124157802 Tredyffrin-Easttown SD

General Fund (10)

Section 1: Tuition/Purchased Services as Reported within Expenditure Detail	Amount
Tuition Reported in General Fund Expenditures 1000-560	5,308,557.62
Purchased Services in General Fund Expenditures 1000-594 and 1000-597	833.41
Section 1 Total	\$5,309,391.03

Section 2: Tuition Paid to Institution Types During Fiscal Year	Tuition Paid For Nonspecial Education	Tuition Paid For Special Education	Total
1 1306 Institutions		139,400.81	139,400.81
2 Institutionalized Children's Programs		833.41	833.41
3 Juveniles Incarcerated in Adult Facilities			
4 Residential Treatment Facilities			
5 Other Local Education Agencies			
6 Brick and Mortar Charter Schools	70,967.85		70,967.85
7 Cyber Charter Schools	591,948.66		591,948.66
8 Career and Technology Centers		782,696.00	782,696.00
9 Approved Private Schools		1,798,095.35	1,798,095.35
10 PA Chartered Schools for the Deaf and Blind			
11 Private Residential Rehabilitative Institutions			
12 Juvenile Detention Centers			
13 Special Program Jointures			
14 Other Tuition Not Included Elsewhere In This Section		1,925,448.95	1,925,448.95
Section 2 Total	\$662,916.51	\$4,646,474.52	\$5,309,391.03

LEA : 124157802 Tredyffrin-Easttown SD

Printed 11/28/2023 1:36:29 PM

Food Service / Cafeteria Operations Fund (51)

1000 Instruction		<u>Total</u>
100 <u>Personnel Services – Salaries</u>		
100 Personnel Services – Salaries		1,018,904.50
Total Personnel Services – Salaries		\$1,018,904.50
200 <u>Personnel Services – Employee Benefits</u>		
220 Social Security Contributions		76,753.68
230 PSERS Retirement Contributions		354,509.17
250 Unemployment Compensation		36.19
270 Group Insurance – Self-Insurance		153,866.28
Total Personnel Services – Employee Benefits		\$585,165.32
400 <u>Purchased Property Services</u>		
430 Repairs and Maintenance Services		35,408.30
Total Purchased Property Services		\$35,408.30
500 <u>Other Purchased Services</u>		
550 Printing and Binding		629.83
580 Travel		566.04
Total Other Purchased Services		\$1,195.87
600 <u>Supplies</u>		
610 General Supplies		110,934.48
630 Food		1,045,827.48
650 Supplies & Fees – Technology Related		8,289.81
Total Supplies		\$1,165,051.77
700 <u>Property</u>		
740 Depreciation		24,726.03
Total Property		\$24,726.03
800 <u>Other Objects</u>		
810 Dues and Fees		3,494.49
Total Other Objects		\$3,494.49
Total 1000 Instruction		\$2,833,946.28

LEA : 124157802 Tredyffrin-Easttown SD

Printed 11/28/2023 1:36:29 PM

Food Service / Cafeteria Operations Fund (51)

1100 Regular Programs – Elementary / Secondary	<u>Elementary</u>	<u>Secondary</u>	<u>Federal</u>	<u>Total</u>
100 <u>Personnel Services – Salaries</u>				
100 Personnel Services – Salaries				1,018,904.50
Total Personnel Services – Salaries				\$1,018,904.50
200 <u>Personnel Services – Employee Benefits</u>				
220 Social Security Contributions				76,753.68
230 PSERS Retirement Contributions				354,509.17
250 Unemployment Compensation				36.19
270 Group Insurance – Self-Insurance				153,866.28
Total Personnel Services – Employee Benefits				\$585,165.32
400 <u>Purchased Property Services</u>				
430 Repairs and Maintenance Services				35,408.30
Total Purchased Property Services				\$35,408.30
500 <u>Other Purchased Services</u>				
550 Printing and Binding				629.83
580 Travel				566.04
Total Other Purchased Services				\$1,195.87
600 <u>Supplies</u>				
610 General Supplies				110,934.48
630 Food				1,045,827.48
650 Supplies & Fees – Technology Related				8,289.81
Total Supplies				\$1,165,051.77
700 <u>Property</u>				
740 Depreciation				24,726.03
Total Property				\$24,726.03
800 <u>Other Objects</u>				
810 Dues and Fees				3,494.49
Total Other Objects				\$3,494.49
Total 1100 Regular Programs – Elementary / Secondary				\$2,833,946.28

LEA : 124157802 Tredyffrin-Easttown SD

Printed 11/28/2023 1:36:29 PM

Food Service / Cafeteria Operations Fund (51)

1110 Regular Programs	<u>Elementary</u>	<u>Secondary</u>	<u>Federal</u>	<u>Total</u>
100 <u>Personnel Services – Salaries</u>				
100 Personnel Services – Salaries				1,018,904.50
Total Personnel Services – Salaries				\$1,018,904.50
200 <u>Personnel Services – Employee Benefits</u>				
220 Social Security Contributions				76,753.68
230 PSERS Retirement Contributions				354,509.17
250 Unemployment Compensation				36.19
270 Group Insurance – Self-Insurance				153,866.28
Total Personnel Services – Employee Benefits				\$585,165.32
400 <u>Purchased Property Services</u>				
430 Repairs and Maintenance Services				35,408.30
Total Purchased Property Services				\$35,408.30
500 <u>Other Purchased Services</u>				
550 Printing and Binding				629.83
580 Travel				566.04
Total Other Purchased Services				\$1,195.87
600 <u>Supplies</u>				
610 General Supplies				110,934.48
630 Food				1,045,827.48
650 Supplies & Fees – Technology Related				8,289.81
Total Supplies				\$1,165,051.77
700 <u>Property</u>				
740 Depreciation				24,726.03
Total Property				\$24,726.03
800 <u>Other Objects</u>				
810 Dues and Fees				3,494.49
Total Other Objects				\$3,494.49
Total 1110 Regular Programs				\$2,833,946.28

	<u>Food Service(51)</u>	<u>Child Care Operations(52)</u>	<u>Other Enterprise(58)</u>	<u>Internal Service(60)</u>	<u>Total</u>
1000 <u>Instruction</u>					
1100 Regular Programs - Elementary / Secondary	2,833,946.28				2,833,946.28
Total Instruction	\$2,833,946.28				\$2,833,946.28
TOTAL ACTUAL EXPENDITURES & OTHER FINANCING USES	\$2,833,946.28				\$2,833,946.28

LEA : 124157802 Tredyffrin-Easttown SD

Printed 11/28/2023 1:36:40 PM

Fund	School	School Number	Local Personnel	Local Nonpersonnel	State Personnel	State Nonpersonnel	Federal Personnel	Federal Nonpersonnel	Total	Explanation
10										
	Beaumont El Sch	4690	5,984,629.06	2,084,335.58	1,083,598.82	380,657.00	55,948.29	37,656.47	9,626,825.22	
	Conestoga SHS	1423	29,837,432.69	10,391,822.25	5,402,473.04	1,897,832.61	278,931.08	187,742.96	47,996,234.63	
	Devon El Sch	1434	4,983,561.53	1,735,682.28	902,341.87	316,983.32	46,589.65	31,357.55	8,016,516.20	
	Hillside El Sch	1439	5,694,367.17	1,983,242.74	1,031,042.94	362,194.67	53,234.73	35,830.08	9,159,912.33	
	New Eagle El Sch	1440	6,334,571.70	2,206,214.13	1,146,960.71	402,915.37	59,219.79	39,858.38	10,189,740.08	
	Tredyffrin-Easttown MS	1421	14,027,571.64	4,885,543.68	2,539,883.42	892,234.64	131,139.07	88,264.25	22,564,636.70	
	Valley Forge El Sch	1438	7,504,937.12	2,613,830.75	1,358,871.36	477,357.38	70,161.14	47,222.55	12,072,380.30	
	Valley Forge MS	4689	14,388,395.87	5,011,212.09	2,605,215.57	915,185.14	134,512.29	90,534.63	23,145,055.59	
Total			88,755,466.78	30,911,883.50	16,070,387.73	5,645,360.13	829,736.04	558,466.87	142,771,301.05	