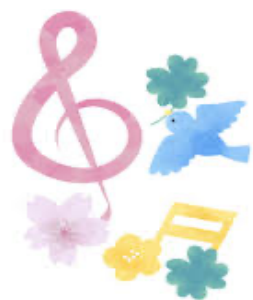


Devon Music Schedule
APRIL 2025



MONDAY	TUESDAY	WEDNESDAY	THURSDAY	FRIDAY
Mar 31 NO SCHOOL	I day 4 8:15 a.m. 4th BAND Music Room 11:00 – Low Brass 11:30 – Percussion 12:00 – Saxophones	2 day 5	3 day 6 8:15 a.m. PRELUDE Orchestra 9:20 – 3A 9:50 – 3B 10:35 – 4B 10:50 – 4A/4C/3E 1:30 – 3C/3D	4 day 1
7 day 2 10:25 – Trumpets 11:00 – Flutes 11:30 – Clarinets	8 day 3 8:15 a.m. 4th CHORUS Cafeteria	9 day 4 8:15 a.m. 4th BAND On Stage 10:25 – Saxophones 11:30 – Low Brass 12:00 – Percussion	10 day 5	11 day 6 8:15 a.m. ENCORE Orchestra 9:20 – 3D 9:50 – 3A 10:20 – 3B/4B 11:30 – 4A/4C 12:15 – 3E 1:30 – 3C
21 day 1	22 day 2 *8:15 a.m. PRELUDE Orchestra On Stage 11:00 – Trumpets 11:30 – Flutes 12:00 – Clarinets	23 day 3 8:15 a.m. 4th CHORUS Cafeteria	24 day 4 8:15 a.m. 4th BAND On Stage 10:25 – Percussion 11:00 – Saxophones 12:00 – Low Brass	25 day 5
28 day 6 8:15 a.m. ENCORE Orchestra On Stage 9:20 – 3C 9:50 – 3D 10:20 – 3A/4B 12:15 – 4A/4C/3E 1:30 – 3B	29 day 1	30 day 2 10:25 – Clarinets 11:30 – Trumpets 12:00 – Flutes	May 1 day 3 8:15 a.m. 4th CHORUS Cafeteria	May 2 day 4 8:15 a.m. 4th BAND On Stage 10:25 – Low Brass 11:00 – Percussion 11:30 – Saxophones

A decorative border of musical notation, including treble clefs, eighth notes, and sixteenth notes, surrounds the central text.

Devon Spring Concert

Wednesday, May 7

9:30 a.m. ~ For Families and Grades 3 & 4

2:30 p.m. ~ For Families and Grades 1 & 2

Performing Groups

4th Grade Band

Prelude & Encore Orchestras

4th Grade Chorus

Musicians will wear their **Devon Music shirts**
with nice school clothes.